

accessories



accessories numerical index

Item	Description	Page	Item	Description	Page	Item	Description	Page
17079	Lying Lotus Candleholder	489	17779	Cassiopeia		17999	Havana Candleholders, S/2 . . .	484
17085	Teak Leaf Bowl	477		Candleholders, S/3	483	18000	Cable Chain Tray, Black	473
17094	Tamarine Bowl	461	17835	Neuron, S/3	508	18001	Gretchen Vase,	
17103	Adilynn Sculpture	517	17836	Lalique Box	478		Black Nickel	444
17107	Brixton Bowl	463	17837	Cable Chain Tray	473	18002	Camilla Tray, Gold	466
17108	Nouveau Sculpture	506	17840	Storm Bottles, S/2	447	18003	Balkan Black Tray	469
17109	Gypsy Trays, S/2	475	17841	Mellita Bottles, S/2	449	18006	Great Pyramids White, S/2	504
17111	Bisbee Vases, S/2	442	17842	Almera Bottles, S/2	452	18007	Great Pyramids Black, S/2	504
17500	Layan Charger	516	17845	Matcha Vases, S/2	431	18008	Two's Company	
17513	Fall Leaves Sculpture	521	17854	Eanes, S/2	505		Sculpture	539
17514	Titan Horse Sculpture	540	17855	Iroquois Bowl	459	18009	Tranquility Sculpture	464
17517	Tala Candleholders, S/2	494	17864	Clarín Bookends, S/2	549	18011	Web Vase	445
17518	Karter Candleholders, S/3	487	17865	Tilman Bookends, S/2	549	18012	Antithesis Bowls, S/2	460
17520	Tinley Bowls, S/2	430	17866	Amhara Vases, S/2	437	18013	Gale Sculpture	506
17522	Masai Giraffe		17867	Contemporary Lotus		18014	Rosea Trays, S/2	467
	Figurines, S/2	546		Sculpture	522	18567	Daria Photo Frames, S/3	550
17523	Oyster Shell		17868	Klara White Bottles, S/2	503	18574	Ellianna, S/2	509
	Sculptures, S/2	526	17869	Makira, S/3	502	18576	Saanvi Sculpture	517
17526	Klara Bottles, S/2	503	17870	Carmen Containers, S/2	447	18577	Ameera Candleholder	497
17527	Milla Vases, S/2	437	17871	Coin Toss, S/3	508	18581	Jaylene Figurines, S/2	538
17536	Tenzin Bowl	433	17872	Beekeeper Sculpture	521	18601	Red Coral Cluster	
17545	Hayworth Containers, S/2	448	17873	Strathmore			Sculpture	529
17546	Castiel Candleholders, S/2	498		Candleholders, S/2	501	18602	Autograph Tree	
17548	Cascara Sculpture	528	17874	Overseer Sculpture	544		Candleholder	492
17549	Charbel Bookends, S/2	549	17875	Delft Bowl	458	18603	Songbirds Sculpture	542
17552	Charvi Candleholders, S/2	490	17876	Ciji Aqua Vases, S/2	435	18613	Rilynn Sculpture	515
17556	Leading the Way		17877	Kona Bowl	460	18614	Drop Anchor Sculpture	525
	Candleholder	488	17878	Nomad Vases, S/2	440	18615	Oak Leaf Bowl	462
17557	Ellianna Silver, S/2	509	17879	Rastia Bowl	460	18621	Leah Bottles, S/2	450
17560	Kyrie Candleholders, S/2	486	17881	Sandringham		18633	Mathias Bottles, S/3	452
17561	Lucian Candleholders, S/2	485		Candleholders, S/2	492	18643	Claire Candleholders, S/2	493
17565	Eugenie Tray	471	17882	Deane Candleholders, S/2	498	18645	Leslie Candleholders, S/2	492
17566	Alega, S/2	509	17883	Gatsby Bottles, S/2	456	18706	Balkan Tray	469
17570	Angelou Vases, S/2	439	17912	Riad Candleholder	496	1870	Rosen Fireplace Screen	552
17578	Ciji Vases, S/2	435	17913	Orbits Ring Sculptures, S/2	518	18708	Aric Sculpture, S/2	511
17579	Ciji Bowl	458	17916	Alize Black, S/3	507	18709	Pina Candleholders, S/3	488
17580	Alize, S/3	507	17947	Mambo Vases, S/2	442	18719	Minta Box	480
17583	Almanzora		17963	Ruffled Feathers Vases, S/2	438	18723	Karis Boxes, S/2	479
	Candleholders, S/2	482	17964	Potter Vases, S/2	439	18731	Essie Bowls, S/2	459
17585	Caballo Dorado		17965	Ruffled Feathers Bowl	457	18741	Invano Vases, S/2	433
	Sculpture	541	17966	Kyan Candleholders, S/3	484	18749	Reine Tray	476
17593	Caryn Trays, S/2	465	17967	Riaan Vases, S/2	436	18767	Teak Branches, S/3	532
17594	Roderick Trays, S/3	465	17968	Kyan Elephant		18770	Rafaela Tray	471
17597	Stand Together Figurine	539		Sculptures, S/2	545	18771	Oja Sculpture	515
17598	Gretchen Vase, Gold	444	17969	Casen Candleholders, S/2	499	18796	Gold Branches Decorative	
17690	Harlan Objects		17972	Koa Sculptures, S/2	506		Fireplace Screen	551
	Black Nickel, S/2	512	17973	Urchin Vases, S/2	438	18798	Flock of Seagulls Sculpture	543
17710	Cyrene	508	17974	Cosmos Bottle	449	18818	Karun Candleholders, S/2	501
17711	Riordan Vases, S/2	432	17975	Rian Vases, S/2	428	18835	Durga Candleholders, S/2	490
17715	Sconset Vases, S/3	434	17976	Tangelo Vases, S/2	431	18837	Flowering Dandelions	
17716	Natchez Vases, S/3	440	17977	Blur Vases, S/2	431		Sculpture, S/2	520
17718	Aponi Bowls, S/2	441	17980	Orbits Ring Sculpture,		18838	Ukti Boxes, S/2	479
17719	Bixby Vases, S/2	435		Large	518	18841	Bianzhong	524
17722	Guevara Vases, S/2	432	17981	Jimena Ring Sculpture,		18844	Merceda Vases, S/3	429
17724	Nephele Box	478		Large	519	18847	Nalini Finials, S/2	533
17727	Tamarind Bowls, S/2	461	17982	Rosen Fireplace Screen,		18848	Badal Candleholders, S/2	495
17729	Cessair Bottles, S/2	449		Black	552	18868	Kenley Vases, S/2	438
17730	Rooney, S/2	513	17985	Orbits Ring Sculptures		18886	Varuna Bottles, S/2	451
17731	Kiernan Candleholder	485		Nickel, S/2	518	18887	Chanda Sculptures, S/2	505
17732	Talmage Tray	472	17986	Markira Blue, S/3	502	18888	Nautilus Shell Sculpture	528
17739	Out of Office, S/3	520	17987	Friendship Sculpture	534	18895	Leyla Sculpture	516
17740	Lenape Bottles, S/2	453	17988	Highclere		18898	Passerines Figurines, S/2	543
17741	Adrie Vases, S/2	428		Candleholders, S/2	491	18903	Carly Tray	470
17742	Sutton Candleholders, S/2	486	17989	Artisan Trays, S/3	467	18920	Carma Candleholders, S/2	494
17744	Chikasha Bowl,		17990	Islander Vases, S/2	440	18921	Phoenix Sculpture	541
	Large	461	17992	Goa Sculpture	531	18922	Talal Sculpture	514
17745	Dua Vases, S/2	441	17994	Ore Candleholders, S/2	482	18923	Arnav Bottles, S/2	455
17746	Illini Candleholders, S/2	499	17995	Lalique White Box	478	18924	Kallie Vases, S/3	436
17759	Pyrite Sculpture	523	17996	Wessex Tray	475	18926	Callum Candleholder	497
17762	Ione Vases, S/2	430	17997	Aga Sculptures, S/2	511	18927	Ayan Sculpture, S/2	512
17763	Azariah Bowls, S/2	457	17998	Montauk		18929	Chandran Containers, S/2	456
17766	Cyprien Containers, S/2	454		Candleholders, S/2	483	18936	Dhara Bottles, S/2	455

accessories numerical index

Item	Description	Page	Item	Description	Page	Item	Description	Page
18938	Cayson Bottles, S/2	454	20062	Musical Ensemble		60191	Seabrook Floral Bouquet	559
18944	Admiration Sculpture	544		Figurines, S/3	536	60192	Puebla Greenery, S/3	558
18950	Dough Tray	477	20066	Stetson Gold Spheres, S/3	510	60193	Canal Moss Centerpiece	555
18952	Myah Candleholder	495	20072	Armino Fireplace Screen	553	60194	Dracaena Planter	558
18953	Ruhi Hurricane		20074	Camilla Tray	466			
	Candleholders, S/2	496	20076	Annabella Bottles, S/2	448			
18955	Alya Bowl	463	20079	Feathers Sculpture, S/3	521			
18957	Anas Bowls, S/3	465	20084	Carla Vases, S/2	429			
18958	Amina Candleholders, S/3	491	20088	Gears Sculpture, S/3	514			
18959	Kaylie Vase	445	20091	Starfish Sculpture, S/2	527			
18961	Jimena Ring Sculptures, S/2	519	20107	Ermanno Teak Balls, S/2	532			
18962	Amna Vases, S/4	445	20110	Speranza Sculpture	515			
18964	Harlan Objects		20120	Hello Friend Sculpture	540			
	Brass, S/2	512	20121	Hold My Hand Sculpture	534			
18965	Kyler Vases, S/2	443	20131	Faustina Boxes and Tray, S/4	480			
18967	Noa Vases, S/2	446	20134	Three Peas in a Pod				
18986	Luka Hurricane			Sculpture	523			
	Candleholder	500	20156	Sara Vases, S/2	439			
18988	Zayan Vases, S/2	434	20157	Saltillo Box	481			
18989	Saniya Containers, S/2	451	20158	Indian Lotus Sculptures, S/2	523			
18991	Camaraderie Figurine	539	20177	Rachele Tray	473			
18992	Courtship Figurine	538	20186	Paol	530			
18994	Aliso Candleholders, S/2	487	20188	Darla Vases, S/2	446			
18997	Mika Tray	474	20309	Hera Sculpture	538			
19058	Colorful Cows Figurines, S/3	547	20605	Fedora Candleholder	489			
19061	Musicians Figurines, S/3	536	20930	Rae Bottle	450			
19231	Sini Finials, S/2	527	60039	Moth Orchid Planter	564			
19280	Music Notes, S/3	524	60095	Preserved Boxwood				
19439	Family Circles Figurine	535		Tree Topiary	565			
19445	At Play Sculpture	535	60106	Preserved Boxwood				
19446	Summer Days			Two Sphere Topiary	565			
	Sculpture	534	60107	Preserved Boxwood				
19473	Playful Pachyderms			Oval Domes, S/2	564			
	Figurine	545	60108	Preserved Boxwood Willow				
19488	Freedom Rider Figurine	535		Topiary	565			
19502	Dahy Statues, S/2	537	60111	Preserved Boxwood Cone				
19547	Freya Containers, S/2	453		Topiary	565			
19556	Conch Shell Sculpture, S/2	526	60115	La Costa Greenery, S/3	555			
19596	Lounging Reader		60119	Salar Succulents	555			
	Bookends, S/2	548	60122	Kaleama Orchids, White	561			
19613	Brisco Finials, S/2	533	60128	Quince Blossoms Silk				
19618	Neelab Boxes, S/2	481		Centerpiece	562,563			
19643	Bulldogs Bookends, S/2	548	60139	Cypress Cone Topiary	567			
19669	Lican Box	481	60140	Cypress Cone				
19675	Practice Shot			Topiaries, S/2	568			
	Figurines, S/2	537	60141	Etta Hyacinth Bouquet	563			
19697	Cosma	522	60144	Celia Silk Magnolia Accent	564			
19725	Abila Tray	477	60145	Blaire Peony Bouquet	563			
19727	Acela Tray	476	60146	Aldis Potted River Birch	556			
19731	Ribbon Candleholder	496	60148	Ceci Kitchen Herbs, S/4	556			
19787	Aniani Tray	470	60149	Hala Silk Centerpiece	556			
19800	Clam Shell Bowl	462	60155	Cecily Hydrangea Bouquet	564			
19822	Ashlea Sculptures, S/2	531	60156	Kimbry Tulip Centerpiece	561			
19825	Kadam Vases, S/2	436	60164	Urbana Fiddle Leaf Fig	557			
19826	Rajata Vases, S/3	446	60172	Cypress Triple Topiary	568			
19862	Smoked Leaf Tray	474	60173	Alverio Succulents	554			
19888	Maximus Figurine	547	60174	Charita Succulents	554			
19910	Hard Coral Sculpture, S/2	529	60175	Eponine Orchid	560			
19912	Nicoline Tray	468	60176	Cypress Globes, S/2	568			
19936	Birds on a Limb Sculpture	542	60177	Evarado Aloe Planter	554			
19947	Propellers Sculpture, S/2	525	60178	Cami Orchid	561			
19948	Tyrannosaurus Sculpture	546	60179	Mari Calla Accent	557			
19957	Lucy Candleholders, S/2	493	60180	Kinsale Moss Centerpiece	555			
19971	Pentagon Cubes, S/2	513	60181	Ibero Split Leaf Palm	557			
19972	River Boat Bowl	464	60182	Belmonte Floral Bouquet	554			
19975	Stetson Spheres, S/3	510	60185	Fasita Planter	559			
19976	Blade Coral	529	60187	Preserved Boxwood Square				
19997	Bechet Tray	472		Topiaries, S/2	566,567			
20007	Rhombus Sculptures, S/3	513	60188	Preserved Boxwood				
20044	Nicia Candleholder	488		Rectangular Topiary	567			
20057	Ettore Tray	468	60189	Cami Orchid, Brass	560			
20061	Constanza, S/2	511	60190	Positano Lemon Accent	558			



17741 Adrie Vases, S/2

S- 10"x 11"x 3", L- 11"x 14"x 5" Set of two, art glass vases showcase deep cobalt blue and black hues.

17975 Rian Vases, S/2

S- 9"x 8"x 9", L- 8"x 10"x 8" Set of two glass vases finished in an iridescent bronze over aqua.



20084 Carla Vases, S/2

S- 8"x 10"x 8", L- 7"x 15"x 7" Shapely, glass vases featuring a beautiful teal green finish that tapers down to white.

18844 Mercede Vases, S/3

S- 4"x 5"x 4", M- 4"x 6"x 4", L- 5"x 8"x 5" Glass bottles in varying shades of blue-green with a textured, rust ivory glaze. Color variations are to be expected and are part of their unique charm.





17520

17520 Tinley Bowls, S/2

S- 7"x 7"x 7", L- 9"x 9"x 9" Handcrafted from blown glass, these bowls feature an ombre finish of gray, black and bronze with an iridescent glaze to complete the unique look.

17762 Lone Vases, S/2

S- 7"x 11"x 7", L- 8"x 13"x 8" Unique seeded glass vases feature a taupe to light blue ombre colorway.



17762



17976

17976 Tangelo Vases, S/2

S- 6" x 6" x 6", L- 6" x 8" x 6" Handcrafted from glass, these vases showcase an iridescent bubbled exterior finish in light beige with a punch of vibrant orange inside.

17977 Blur Vases, S/2

S- 3" x 15" x 3", L- 3" x 19" x 3" This set of two glass vases showcase an elegant fluted design in a glossy ombre ivory and beige finish.

17845 Matcha Vases, S/2

S- 7" x 7" x 7", L- 9" x 9" x 9" Crafted from 100% art glass, these vases showcase a seeded glass look with shades of sage and moss green.



17977



17845



17711

17711 Riordan Vases, S/2

S- 8" x 16" x 8", L- 10" x 20" x 10" Made from ceramic, these contemporary vases feature a marbled black and white exterior with a matte white interior.

17722 Guevara Vases, S/2

S- 11" x 10" x 4", L- 11" x 19" x 4" Set of two earthenware vases are finished in a striped gray ombre glaze.



17722



18741

18741 Invano Vases, S/2

S- 7" x 12" x 4", L- 8" x 19" x 5" Textured, distressed ceramic leaf vases finished in a pale blue, ivory and bronze glaze. Due to the nature of fired glazes on ceramic, finishes will vary slightly.



17536

17536 Tenzin Bowl

16" x 6" x 6" Ceramic bowl finished in an aqua blue cracked glaze with chocolate brown accents.



17715 Sconset Vases, S/3

S- 5" x 18" x 4", M- 4" x 20" x 4", L- 5" x 24" x 5" Set of three earthenware vases with alternating off-white, light blue and navy glazes.



18988 Zayan Vases, S/2

S- 7" x 7" x 7", L- 9" x 8" x 9" Set of two, uniquely shaped ceramic stem vases feature a spinning top pattern in multiple tones of blue.



17578

17578 Ciji Vases, S/2

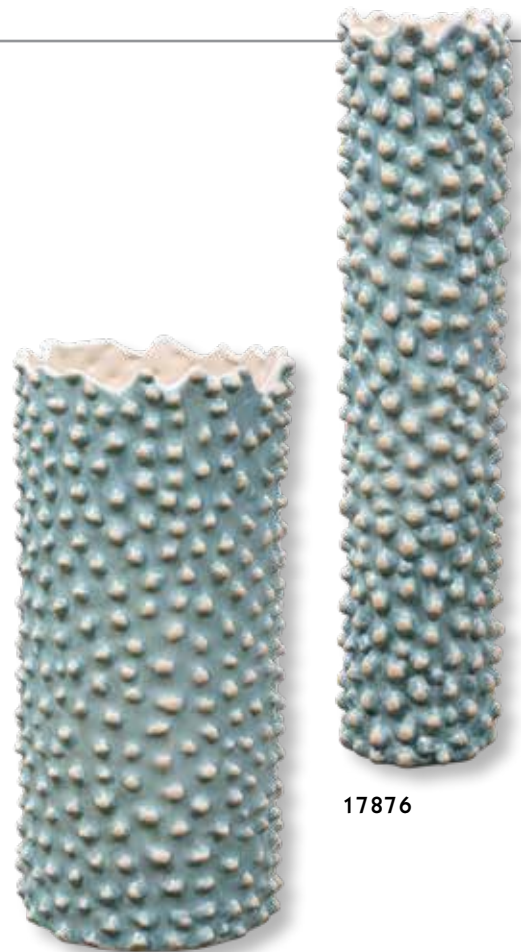
S- 6" x 14" x 6", L- 4" x 18" x 4" Set of two, white ceramic vases with heavy exterior texture and a bright blue interior glaze.

17876 Ciji Aqua Vases, S/2

S- 6" x 14" x 6", L- 4" x 19" x 4" Set of two, aqua ceramic vases with heavy exterior texture and an ivory interior glaze.

17719 Bixby Vases, S/2

S- 6" x 13" x 6", L- 7" x 15" x 7" Earthenware vases finished in a cobalt blue glaze with carved textural detail.



17876



17719



17967



19825



18924

17967 Riaan Vases, S/2

S- 9"x 12"x 4", L- 9"x 15"x 4" Set of two vases feature a ribbed design finished in sand textured earth tones with gold leaf details.

19825 Kadam Vases, S/2

S- 5"x 9"x 5", L- 6"x 12"x 6" Rust brown ceramic with bright orange accents. Not designed to hold liquids.

18924 Kallie Vases, S/3

S- 10"x 7"x 5", M- 9"x 9"x 5", L- 8"x 13"x 5" Roughcast ceramic vases, dipped from the top in a metallic golden glaze. Each vessel is set on metal ball feet.



17866

17866 Amhara Vases, S/2

S- 6"x 14"x 6", L- 6"x 18"x 6" Set of two ceramic vases are finished in a contemporary black and white striped motif, inspired by tribal designs.

17527 Milla Vases, S/2

S- 8"x 9"x 8", L- 8"x 12"x 8" Set of mid-century modern tripod base vases are organically shaped and feature a textured crackled ivory ceramic with pierced holes.



17527



18868



17963

18868 Kenley Vases, S/2

S- 5"x 23"x 4", L- 5"x 25"x 4" Cracked white ceramic with pale gray undertones.

17963 Ruffled Feathers Vases, S/2

S- 16"x 16"x 5", L- 12"x 20"x 5" Set of two ceramic vases model organic curved edges that create an artistic look and are finished in a modern matte white glaze.

17973 Urchin Vases, S/2

S- 10"x 5"x 10", L- 8"x 9"x 8" Taking cues from coastal style, these ceramic vases are finished in an ivory and beige glaze with noticeable sand texture and organic curved lines.



17973



20156



17570



17964

20156 Sara Vases, S/2

S- 5" x 18" x 5", L- 6" x 23" x 6" Tall, textured, ceramic vases feature a pale taupe glaze with darker brown undertones. The cylindrical shape will add style and sophistication in your space. Great used next to a fireplace or as floor vases for that extra WOW factor. Not designed to hold liquids. Due to the nature of fired glazes on ceramic, finishes will vary slightly.

17570 Angelou Vases, S/2

S- 5" x 14" x 5", L- 5" x 18" x 5" Set of two ceramic vases finished in a white glaze with taupe accents, beaded texture and a ribbed interior.

17964 Potter Vases, S/2

S- 12" x 14" x 12", L- 11" x 21" x 11" Handcrafted from ceramic, these fluted vases are finished in striped ivory, blue, and tan glaze.



17716

17716 Natchez Vases, S/3

S- 7"x 12"x 7", M- 10"x 13"x 10", L- 7"x 18"x 7"

Set of three earthenware vases are finished in light gray, charcoal and natural beige with etched geometric patterns.

17878 Nomad Vases, S/2

S- 6"x 13"x 5", L- 8"x 15"x 5" Set of two rectangular vases showcase a well-traveled look with a black and white color story and natural beige palm leaf strands that create a unique basketweave design.

17990 Islander Vases, S/2

S- 10"x 12"x 10", L- 11"x 16"x 11" This set of two terracotta vases feature natural bamboo pieces hand-applied in a stripe motif accented by a whitewashed finish.



17878



17990



17745 Dua Vases, S/2

S- 9" x 12" x 8", L- 12" x 18" x 9" Set of two terracotta vases are finished in a natural stone look with noticeable texture and braided rattan accents.



17718 Aponi Bowls, S/2

S- 8" x 7" x 8", L- 11" x 10" x 11" Set of two earthenware bowls finished in a natural concrete gray tone with woven rattan details.



17111

17111 Bisbee Vases, S/2

S- 10"x 6"x 10", L- 8"x 12"x 8" Set of two terracotta vases handcrafted by skilled artisans. Each vase is finished in a mottled coffee brown and turquoise bubble glaze, accented by natural woven rattan.

17947 Mambo Vases, S/2

S- 5"x 12"x 5", L- 5"x 16"x 5" Set of two vases are made from solid tamarind wood and are finished in a deep blue glaze that accentuates the natural wood grain. Variations in the grain are natural to this type of wood.



17947



18965 Kyler Vases, S/2

S- 13"x 18"x 2", L- 11"x 22"x 2" Oversized set of two,
handcrafted, textured cast aluminum vases featuring a bronze finish.



17598 Gretchen Vase, Gold
23" x 22" x 4" Cast aluminum vase features a
ribbed, gold finish.



18959



18011

18959 Kaylie Vase

6" x 21" x 6" Large-scale textured cast aluminum vase featuring a black nickel finish.

18011 Web Vase

22" x 24" x 6" Crafted from cast aluminum, this vase showcases an intricate open frame design finished in dark bronze.

18962 Amna Vases, S/4

S- 4" x 4" x 4", M- 4" x 6" x 4", L- 3" x 7" x 3", XL- 3" x 7" x 3" Set of four, textured cast aluminum, geometric vases feature a bronze finish.



18962



19826 Rajata Vases, S/3

S- 4"x 12"x 4", M- 5"x 13"x 5", L- 6"x 16"x 6"

These vases are made of shiny, golden champagne electroplated metal. Not designed to hold liquids.

18967 Noa Vases, S/2

S- 4"x 13"x 4", L- 6"x 18"x 6" Set of two, cast aluminum vases feature a subtle twist design and finished in an antiqued nickel.

20188 Darla Vases, S/2

S- 8"x 8"x 3", L- 7"x 12"x 3" Cast of aluminum, these handcrafted vases feature a ribbed, polished nickel finish.



20188



17840

17840 Storm Bottles, S/2

S- 9"x 15"x 9", L- 6"x 18"x 6" Crafted from art glass, these bottles showcase a unique, heavy texture and are finished in neutral shades of charcoal, taupe and silver. Each is accented by a brushed nickel finished iron top.

17870 Carmen Containers, S/2

S- 6"x 18"x 6", L- 6"x 22"x 6" Made with gray seeded glass, these containers may serve as stylish accessories or useful storage. Each has an elegant gray and white marble lid with a brushed nickel accent.



17870



17545 Hayworth Containers, S/2

S- 6"x 18"x 6", L- 6"x 22"x 6" Made with clear seeded glass, these containers may serve as stylish accessories or useful storage. Each has an elegant white marble lid with a brushed brass accent.

20076 Annabella Bottles, S/2

S- 3"x 15"x 3", L- 4"x 19"x 3" Thick, textured teal green glass that features ornate, coffee bronze metal stoppers. For decorative purposes only.





17974

17974 Cosmos Bottle

10"x 11"x 5" Showcasing a masculine look, this bottle features an ebony and charcoal bubble glass base accented by a contemporary brushed nickel plated iron lift-off stopper.

17841 Mellita Bottles, S/2

S- 10"x 14"x 10", L- 8"x 20"x 8", A nod to classic coastal style, these bottles feature an aqua blue art glass exterior with sand dollar lid accents finished in aged gunmetal.

17729 Cessair Bottles, S/2

S- 5"x 8"x 5", L- 7"x 10"x 7" Set of two art glass bottles feature organic texture with an iridescent blue-gray hue. Each bottle is paired with a brushed brass plated lid and crystal accent.



17841



17729



18621 Leah Bottles, S/2

S- 6"x 13"x 6", L- 7"x 16"x 7" Pale blue bubble glass containers with stepped polished nickel and crystal cylinder stoppers.

20930 Rae Bottle

11"x 19"x 4" Sky blue iridescent glass bottle with blue sugar spun accents and a brushed nickel plated removable lid with blue agate stone displayed in the center of the iron circle.



20930

18886 Varuna Bottles, S/2

S- 6"x 10"x 6", L- 5"x 14"x 5" Cracked and textured, cobalt blue ceramic with rust undertones and a heavy glaze. Sat on crystal bases with matching crystal and brushed nickel lift-off finial caps.

18989 Saniya Containers, S/2

S- 5"x 8"x 5", L- 7"x 8"x 7" This set of two, sapphire blue ceramic containers feature a geometric pattern with ivory undertones and lift-off lids.





18633

18633 Mathias Bottles, S/3

S- 5" x 11" x 5", M- 6" x 13" x 6", L- 6" x 18" x 6"

Hand fluted ceramic bottles in a gray-blue glaze topped with weathered bronze metal finials with matching crystal sphere accents.

17842 Almera Bottles, S/2

S- 6" x 14" x 6", L- 8" x 16" x 8"

Set of two ceramic bottles feature an organic textured finish in a distressed dark teal glaze, paired with polished nickel accents and thick crystal details.



17842



19547 Freya Containers, S/2

S- 11"x 12"x 5", L- 8"x 16"x 5" These ceramic containers feature a distressed, crackled light sky blue finish with antiqued khaki undertones and removable lids. Not designed to hold liquids.

17740 Lenape Bottles, S/2

S- 6"x 11"x 6", L- 7"x 12"x 7" Set of two ceramic bottles showcase a tribal design in a cream, light blue and taupe colorway. Each feature light distressed details and are paired with antique brushed brass and crystal lids.





18938

18938 Cayson Bottles, S/2

S- 6"x 8"x 6", L- 7"x 9"x 7" Vertically ribbed ceramic, finished in a raw umber brown glaze with cream undertones and brushed nickel plated lift-off finials.

17766 Cyprien Containers, S/2

S- 9"x 9"x 9", L- 6"x 19"x 6" Ceramic containers feature carved detailing and are finished in off-white and smoke gray crackle glazes with respective aged gold and brushed nickel finished lids.



17766



18936

18936 Dhara Bottles, S/2

S- 7"x 20"x 7", L- 7"x 23"x 7" Subtle, mesh textured ceramic finished in a light taupe glaze with lift-off brushed nickel plated finials.

18923 Arnav Bottles, S/2

S- 7"x 14"x 7", L- 9"x 16"x 9" Ceramic bottles with matte black hand-scored bodies, golden metallic glazed necks and shaped crystal finials.



18923



18929 Chandran Containers, S/2

S- 9"x 12"x 9", L- 6"x 17"x 6" Matte white ceramic with raised cube design and lift-off brushed nickel lids.

17883 Gatsby Bottles, S/2

S- 10"x 11"x 10", L- 6"x 17"x 6" Set of two ceramic bottles showcase a subtle ribbed texture, finished in bright silver leaf with crystal and brushed nickel accents.





17965

17965 Ruffled Feathers Bowl

24" x 4" x 10" This ceramic bowl models organic curved edges that create a feminine look and is finished in a modern matte white glaze.

17763 Azariah Bowls, S/2

S- 8" x 4" x 8", L- 11" x 5" x 11" A nod to old-world style, these ceramic bowls feature a distressed cream and beige crackle glaze with slight cracking and ribbed details.



17763



17579 Ciji Bowl

14" x 3" x 14" White ceramic bowl with heavy exterior texture and a bright blue interior glaze.

17875 Delft Bowl

17" x 4" x 17" A contemporary take on classic blue and white ceramics, this bowl features a unique ribbed design with a hand applied cobalt blue glaze.



17875



17855 Iroquois Bowl

16"x 4"x 8" Earthenware bowl is finished in a calming mint green glaze with aqua blue details and accented by a ombre style chocolate brown glaze on the rim.

18731 Essie Bowls, S/2

S- 14"x 6"x 14", L- 16"x 6"x 16" Distressed, crackled pale gray ceramic bowls with rust undertones and lightly antiqued silver metal stands. Due to the nature of fired glazes on ceramic, finishes will vary slightly.





17879

17879 Rastia Bowl

14" x 5" x 14" Inspired by global travels, this bowl features a neutral terrazzo look with a black coral and resin mixed rim.

18012 Antithesis Bowls, S/2

S- 10" x 9" x 10", L- 10" x 12" x 10" Set of two modern pedestal bowls are constructed from a striking black and white granulated marble, accurately replicating the look of Thassos marble.

17877 Kona Bowl

17" x 4" x 17" Made from 100% tamarind wood, this bowl has a distressed charcoal finished exterior with a bright aqua finished interior. Each piece is handcrafted making it unique. Cracks and variations in the grain are normal.



18012



17877



17744



17727



17744 Chikasha Bowl, Large

15"x 3"x 13" Made of natural teak wood with a charcoal wash, each piece is handcrafted making it unique. Black and white rim details add a bohemian element to the design. Cracks and variations in the grain are normal.

17727 Tamarind Bowls, S/2

S- 9"x 3"x 9", L- 11"x 3"x 11" Set of two tamarind wood bowls showcase natural wood grain and color patterns. Because each one is handcrafted, wood tone and grain may vary. Each bowl is food safe.



17094

17094 Tamarine Bowl

16"x 8"x 16" Natural raw wood finish allows the beauty of the grain to show through. Each will vary in size due to being uniquely handcrafted. Cracks and variations in grain are normal.



19800

19800 Clam Shell Bowl

23"x 7"x 13" This decorative bowl is designed to closely mimic a clamshell with an antique white finish. A perfect statement piece for any beachy or coastal home decor. Indoor use only.

18615 Oak Leaf Bowl

20"x 7"x 18" Cast leaf bowl finished in a heavily antiqued metallic gold finish.



18615



18955

18955 Alya Bowl

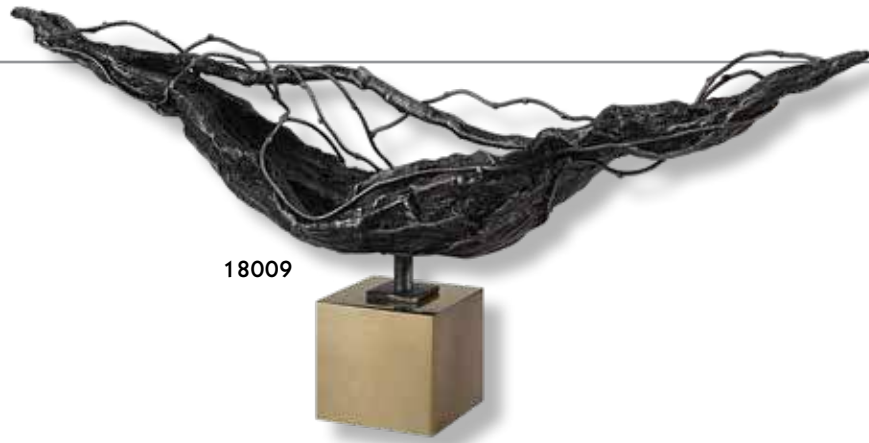
17" x 8" x 17" Copper bronze luster glass bowl completed with an aged bronze, scrolled ironwork base.

17107 Brixton Bowl

14" x 7" x 14" Terracotta bowl finished in an aged black with gold highlights and accented by a water hyacinth covered base.



17107



18009



18009 Tranquility Sculpture

20"x 8"x 4" Crafted from cast iron, this modern abstract sculpture is finished in rustic dark bronze and displayed on an iron cube base finished in antique brass. May also be used as a decorative bowl.



19972 River Boat Bowl

30"x 5"x 7" Made from heavily distressed, aged black metal with silver undertones and a silver stand.



19972



17593



17594

17593 Caryn Trays, S/2

S- 13"x 3"x 6", L- 21"x 3"x 6" These cast aluminum trays feature unique, organic shapes finished in dark black nickel.

17594 Roderick Trays, S/3

S- 9"x 2"x 8", L- 11"x 2"x 11", L- 14"x 3"x 14" Set of three, cast aluminum trays feature a dark black nickel finish.

18957 Anas Bowls, S/3

S- 13"x 3"x 4", M- 16"x 4"x 6", L- 20"x 4"x 8" Set of three, textured cast aluminum bowls feature an antique brass finish.



18957



20074 Camilla Tray

36"x 3"x 9" Dramatic proportions and thick cast aluminum make this tray special. The edge is rough cut, and polished to have a soft hand. Finish is a textured warm nickel.





17989 Artisan Trays, S/3

S- 15"x 5", M- 20"x 6", L- 24"x 8" Set of three cast aluminum trays displays organic edges with a heavily textured light antique gold finish.

18014 Rosea Trays, S/2

S- 17"x 3"x 10", L- 20"x 3"x 11" Set of two metal trays are finished in brushed gold with natural rope wrapped handles and mirrored bottoms.





19912

19912 Nicoline Tray

27" x 4" x 18" Forged iron with brass patina accented by a reinforced mirror interior.

20057 Ettore Tray

24" x 4" x 14" Sophisticated, black beveled glass tray with lightly antiqued gold leaf handles.



20057



18706

18706 Balkan Tray

24" x 5" x 15" Hand forged iron frame finished in lightly antiqued gold leaf accented with suspended, clear acrylic, solid square bars and a beveled mirror interior.

18003 Balkan Black Tray

24" x 5" x 15" Hand forged iron frame finished in matte black accented with suspended, clear acrylic, solid square bars and a beveled mirror interior.



18003



18903

18903 Carly Tray

18" x 2" x 11" Beveled mirrors make their way around this tray, accented by bright gold leaf.

19787 Aniani Tray

18" x 2" x 14" Decorative and functional tray constructed of multiple mirrors with polished edges for a smooth finish.



19787



17565 Eugenie Tray

21" x 3" x 15" Decorative and functional tray constructed with a polished nickel plated frame and an antique mirror base.

18770 Rafaela Tray

24" x 4" x 14" Forged iron with a metallic silver leaf finish accented by a reinforced glass interior.



17565



18770



17732



19997

17732 Talmage Tray

20" x 2" x 16" Contemporary tray showcases an organic ribbed texture finished in silver leaf with a mirrored base.

19997 Bechet Tray

22" x 2" x 22" Tray with a lightly antiqued silver finish and antiqued mirror interior.





20177

20177 Rachele Tray

24" x 5" x 24" Decorative and functional, perfect for organizing those special items on your vanity or use it as a decorative accent on any table. Softly, curved steel finished in an elegant silver leaf accented by a mirrored tray that will give fullness and depth to whatever you may display on it.

17837 Cable Chain Tray

19" x 2" x 13" Frame made from 100% cast iron, this tray is finished in gold leaf with noticeable distressed details and a mirrored bottom.



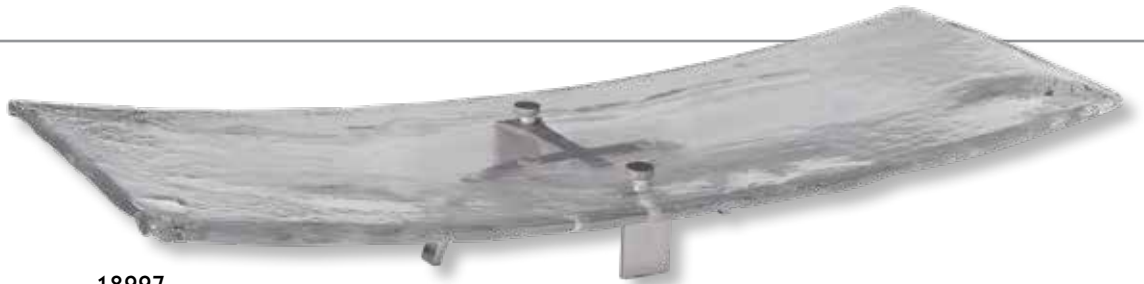
17837

18000 Cable Chain Tray, Black

19" x 2" x 13" Frame made from 100% cast iron, this tray is finished in rustic black with noticeable distressed details and a mirrored bottom.



18000



18997

18997 Mika Tray

24" x 3" x 9" Clear art glass tray features a slight curve to the glass and is displayed on a brushed nickel, open arch base.

19862 Smoked Leaf Tray

43" x 5" x 17" Beautifully curved glass tray in a smoked, dark gray finish.



19862



17109

17109 Gypsy Trays, S/2

S- 14"x 2"x 13", L- 17"x 2"x 16" Set of two trays are finished in a soft taupe with natural beige palm leaf strands layered in a unique basketweave design. May be used as tabletop accessories or wall decor.

17996 Wessex Tray

19"x 3"x 14" Tray is covered in an elegant gray faux shagreen with clear acrylic handles and aged gold accents.



17996



18749

18749 Reine Tray

24" x 4" x 24" Classic round tray featuring acacia wood with iron handles.

19727 Acela Tray

20" x 4" x 20" Natural fir wood base with aged metal details.



19727



19725



17085

19725 Abila Tray

27" x 4" x 18" Tray finished in a heavily distressed antique cream finish with natural fir wood undertones and antiqued bronze accents. Cutout handles for ease of carrying. Inside base measurement is 21x12.

17085 Teak Leaf Bowl

27" x 5" x 10" Made of natural teak wood. Each piece is handcrafted making it unique. Sizes will vary. Cracks and variations in the grain are normal.

18950 Dough Tray

30" x 3" x 9" Authentic reproduction of an India dough tray used for mixing and kneading the dough. Handcrafted from solid reclaimed wood, so each will vary slightly in size and finish. Our trays include an iron band, that was often added to help control the splitting of the solid wood dough trays. Solid wood will continue to move with temperature and humidity changes, which can result in small cracks and uneven surfaces, adding to its authenticity and character.



18950



17724

17724 Nephele Box

12"x 4"x 6" Decorative box has an aged white stone look with an etched gold leaf feather accent and lift-off lid.

17995 Lalique White Box

13"x 5"x 9" Inspired by the Art Deco era, this decorative box showcases a faux white shagreen wrapped exterior accented by a brushed antique brass and black enamel closure. The interior is finished in matte black.



17995

17836 Lalique Box

13"x 5"x 9" Inspired by the Art Deco era, this decorative box showcases a faux smoke gray shagreen wrapped exterior accented by a brushed antique brass and black enamel closure. The interior is finished in matte black.



17836





18838 Ukti Boxes, S/2

S- 9"x 3"x 5", L- 12"x 4"x 6" Black alligator patterned boxes with bright gold leaf trim and removable lids.

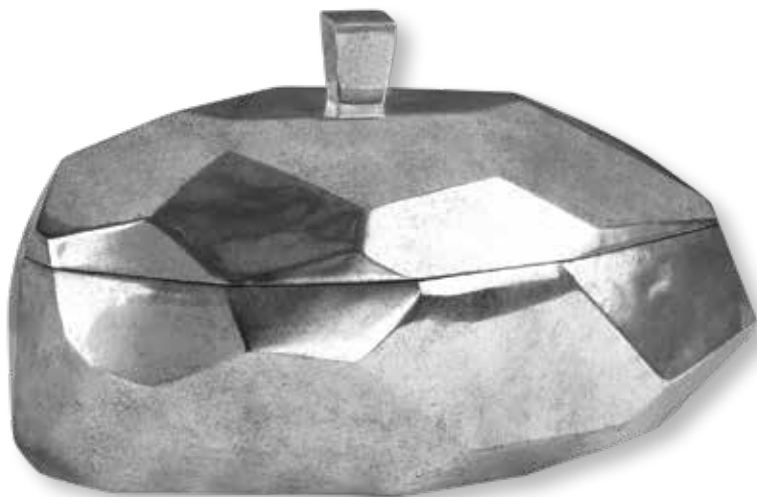
18723 Karis Boxes, S/2

S- 9"x 3"x 5", L- 12"x 4"x 6" Emerald green boxes with bright gold leaf trim and removable lids.





20131



18719

20131 Faustina Boxes and Tray, S/4

Tray- 20" x 2" x 6", S Box (2)- 6" x 9" x 5",
L Box- 5" x 11" x 5" Beveled mirrors make their
way around these beautiful boxes, accented by
bright, gold leaf metallic tray and handles. Lids
are removable.

18719 Minta Box

15" x 9" x 9" Tarnished silver box with
removable lid.





19669

19669 Lican Box

18"x 9"x 7" Natural wood box with a light chestnut stain and antiqued silver accents with a lift-off lid.

20157 Saltillo Box

12"x 8"x 12" A striking addition to any decor as well as being functional. The heavily distressed, white ceramic glaze has chocolate brown undertones accented with plated, antiqued bronze details. Removable lid to store those special treasures. Due to the nature of fired glazes on ceramic, finishes will vary slightly.



20157

19618 Neelab Boxes, S/2

S- 7"x 5"x 3", L- 10"x 6"x 4" These ceramic boxes feature a distressed pale blue finish with reddish brown accents, caramel highlights and removeable lids.



19618



17583

17583 Almazora Candleholders, S/2

S- 5" x 14" x 5", L- 5" x 18" x 5" Set of two candleholders feature teal glass base with bronze sugar spun accents and brushed nickel and crystal details. Includes two 4" x 3" distressed white candles.

17994 Ore Candleholders, S/2

S- 5" x 14" x 5", L- 5" x 17" x 5" Set of two candleholders showcase a contemporary feel with geometric silver glass accents and brushed nickel finished bases. Two 3" x 3" distressed white candles are included.



17994



17779

17779 Cassiopeia Candleholders, S/3

S- 4"x 10"x 4", M- 4"x 12"x 4", L- 5"x 15"x 5" Set of three candleholders showcase traditional silhouettes and are made from a deep, midnight blue glass with 3"x 3" white candles included.

17998 Montauk Candleholders, S/2

S- 4"x 14"x 4", L- 4"x 17"x 4" Showcasing trendy white and indigo hues, these ceramic candleholders display a horizontally striped glaze with polished nickel candle cups. Two 3"x 3" distressed white candles included.



17998



17966



17999



17966 Kyan Candleholders, S/3

S- 5"x 7"x 5", M- 5"x 9"x 5", L- 5"x 11"x 5"

Set of three candleholders feature a lightly textured ceramic with crackled glaze finished in an ombre, light antique sand with crystal bases. Three 3"x 3" off-white distressed candles included.

17999 Havana Candleholders, S/2

S- 4"x 14"x 4", L- 4"x 17"x 4" Set of two ceramic candleholders are finished in a vertically striped ivory and cobalt glaze, accented by iron candle cups finished in polished nickel with two 4"x 3" distressed off-white candles included.



17731

17731 Kiernan Candleholder

27" x 13" x 9" Modern candleholder features an intertwined ring design and is finished in polished nickel. Three 4" x 3" white candles are included.

17561 Lucian Candleholders, S/2

S- 5" x 12" x 5", L- 5" x 15" x 5" Set of two candleholders featuring an open steel frame, finished in polished nickel with crystal accents. Two 4" x 3" distressed white candles included.



17561



17742



17560



17742 Sutton Candleholders, S/2

S- 6" x 7" x 5", L- 6" x 9" x 5" Set of two crystal and polished nickel candleholders. Two 3" x 3" distressed white square candles are included.

17560 Kyrie Candleholders, S/2

S- 5" x 14" x 5", L- 5" x 19" x 5" Set of two candleholders finished in polished nickel with large, square crystal accents. Includes two 4" x 3" distressed white candles.



18994



17518

18994 Aliso Candleholders, S/2

S- 5" x 19" x 5", L- 5" x 23" x 5" This set of two candleholders features a sleek tapered design in solid cast iron with a subtle porous texture, sealed to preserve the natural finish and accented with gold infused highlights. Includes two 3" x 3" distressed off-white candles.

17518 Karter Candleholders, S/3

S- 4" x 14" x 4", M- 4" x 18" x 4", L- 4" x 22" x 4" This set of three candleholders features a sleek angular design in raw iron and clear glass cylinders with three 3" x 3" distressed beige candles included.



17556 Leading The Way Candleholder

8" x 16" x 7" Cast iron finished in an aged silver with gold accents. Includes one 4" x 4" distressed off-white candle.

20044 Nicia Candleholder

11" x 14" x 11" Candleholder features a tarnished, copper bronze finish with a clear, hammered glass globe. Includes one 4" x 4" white candle.

18709 Pina Candleholders, S/3

S- 7" x 7" x 5", M- 10" x 10" x 5", L- 13" x 13" x 5" Aged black curved metal with silver highlights. Includes one 3" x 3", one 3" x 4" and one 3" x 5" distressed white candles.





17079 Lying Lotus Candleholder

35" x 4" x 16" Candleholder is made of hand forged metal finished in champagne silver and pewter. This may be hung on wall or used on tabletop. Two 4" x 2" white candles included.

20605 Fedora Candleholder

32" x 30" x 6" This candleholder is finished in a dark brown wash accented with clear beads. Five 3" x 4" distressed beige candles included.





18835 Durga Candleholders, S/2

S- 7" x 27" x 7", L- 7" x 31" x 7" Matte black, open design iron work with coffee bronze details, clear water glass globes and two 4" x 5" distressed beige candles.

17552 Charvi Candleholders, S/2

S- 7" x 16" x 7", L- 7" x 20" x 7" This set of two candleholders feature an aged brass stand surrounded by a clear glass hurricane and finished with a thick bronze foot. Two 4" x 3" distressed off-white candles included.



17552



18958 Amina Candleholders, S/3

S- 5" x 7" x 5", M- 5" x 10" x 5", L- 5" x 13" x 5"
Set of three, textured cast aluminum candleholders feature an antiqued brass finish and completed with three 4" x 4" white candles.

17988 Highclere Candleholders, S/2

S- 7" x 20" x 7", L- 7" x 26" x 7" Set of two cast aluminum candleholders display a traditional silhouette, finished in light antique gold. Includes two 5" x 4" white candles.





17881



18602

17881 Sandringham Candleholders, S/2

S- 5" x 11" x 5", L- 5" x 14" x 5" Sophisticated and traditional, these candleholders feature an iron base finished in antique brushed brass, accented by crystal details and a clear glass hurricane. Includes two 4" x 3" white candles.

18602 Autograph Tree Candleholder

8" x 20" x 8" Clear glass globe above a cluster of life-cast Hawaiian Autograph Tree pods rendered in an antique bronze finish, set on a concrete cylinder base with one 4" x 3" distressed off-white candle.

18645 Leslie Candleholders, S/2

S- 6" x 15" x 6", L- 6" x 19" x 6" Plated, brushed brass cylinders with chunky clear glass accents and two 3" x 3" off-white candles.



18645



18643



18643 Claire Candleholders, S/2

S- 4" x 2" x 4", L- 6" x 3" x 6" Heavy crystal block candleholders, suspended by machined brass finished legs. Includes one 3" x 3" and one 4" x 3" distressed off-white candles.

19957 Lucy Candleholders, S/2

6" x 13" x 6" Bright, metallic gold metal with clear glass globes and two 3" x 3" distressed off-white candles.



19957



17517

17517 Tala Candleholders, S/2

6" x 20" x 6" Set of two forged iron candleholders composed of multiple staggered, stacked rings and finished in a plated gold with clear glass globe and acrylic base. Includes two 3" x 3" distressed off-white candles.

18920 Carma Candleholders, S/2

S- 8" x 22" x 8", L- 8" x 24" x 8" Plated coffee bronze with textured, clear glass accents and two 4" x 3" distressed off-white candles.



18920

18848 Badal Candleholders, S/2

S- 9"x 29"x 9", L- 9"x 33"x 9" Heavily antiqued gold finish on hand hammered iron with egg shaped, copper brown luster glass globes and two 3"x 3" white candles.

18952 Myah Candleholder

15"x 15"x 15" Candleholder featuring an open iron, geometric pattern finished in an antiqued gold. Candle cup with copper bronze luster glass globe appears to be floating in the center with one 4"x 4" white candle.





19731

19731 Ribbon Candleholder

24" x 10" x 9" Swirled, antiqued, bronze metal candleholder with transparent copper brown glass. Six 2" x 2" beige candles included.

17912 Riad Candleholder

6" x 16" x 6" Taking cues from Moroccan style, this candleholder is finished in dark bronze with gold rub-through details and a textured glass hurricane. One white 3" x 3" candle is included.

18953 Ruhi Hurricane Candleholders, S/2

S- 5" x 7" x 5", L- 5" x 11" x 5" This set of two hurricane candleholders features a heavily antiqued gold finish over an open iron pattern surrounding copper bronze luster glass globe inserts. Includes one 3" x 3" and one 3" x 4" white candles.



17912



18953



18926 Callum Candleholder

33"x 9"x 7" Cracked, aged black wood with recessed candle cups set atop heavily antiqued, silver arched iron legs and five 4"x 3" distressed white candles.

18577 Ameera Candleholder

24"x 18"x 6" Lightly antiqued silver champagne iron ring features a natural twig stretched across the front and attached with rope, the base is natural fir wood. Includes three 3"x 3" distressed off-white candles. Due to the authentic nature of the twig, size and shape will vary slightly.





17546 Castiel Candleholders, S/2

S- 5" x 10" x 5", L- 5" x 13" x 5" Set of two candleholders feature an antique brushed brass finish and an elegant white marble foot. Two 4" x 3" off-white distressed candles included.

17882 Deane Candleholders, S/2

S- 5" x 20" x 5", L- 5" x 22" x 5" Set of two candleholders feature a fluted iron base finished in a dark gunmetal with smoke gray, white marble accents and clear glass hurricanes. Two 3" x 3" white candles are included.



17746 Illini Candleholders, S/2

S- 5"x 13"x 5", L- 6"x 16"x 6" Set of two candleholders feature natural coral stone bases with teak wood and aged black accents. Two 3"x 3" white candles included.

17969 Casen Candleholders, S/2

S- 3"x 16"x 3", L- 3"x 19"x 3" Set of two candleholders feature stacked cubes made of granulated marble that accurately replicates the look of Thassos marble set atop crystal bases with polished nickel candle cups. Two 3"x 3" distressed white candles included.



17746



17969



18986 Luka Hurricane Candleholder

8" x 16" x 8" This hurricane candleholder features an antiqued concrete base with clear glass globe and one 5" x 4" distressed off-white candle. Suitable for both indoor and outdoor use.



17873



18818



17873 Strathmore Candleholders, S/2

S- 5" x 8" x 5", L- 5" x 13" x 5" Reminiscent of chiseled stone, these candleholders feature a stone gray finish that exudes a masculine luxe style. Each is accented by a brushed nickel candle cup and includes two 4" x 3" distressed white candles.

18818 Karun Candleholders, S/2

S- 5" x 12" x 5", L- 5" x 17" x 5" Charcoal stained concrete with crystal bases and brushed nickel candle cups. Two 4" x 3" distressed white candles included.



17869

17869 Makira, S/3

S- 4"x 24"x 4", M- 4"x 27"x 4",
L- 4"x 29"x 4" Ceramic constructed
trio is inspired by global travels and
exhibits a trendy black and white color
story. Each is accented by polished
chrome and crystal details.



17986

17986 Markira Blue, S/3

S- 4"x 24"x 4", M- 4"x 27"x 4",
L- 4"x 29"x 4" Ceramic constructed
trio is inspired by global travels and
exhibits a trendy blue and white color
story. Each is accented by polished
chrome and wood details.



17868



17526

17868 Klara White Bottles, S/2

S- 8"x 13"x 8", L- 8"x 17"x 8" Modern style emanates from this set of decorative ceramic bottles with an embossed geometric pattern, finished in a glossy white and accented with polished nickel and crystal finials.

17526 Klara Bottles, S/2

S- 8"x 13"x 8", L- 8"x 17"x 8" Modern style emanates from this set of decorative ceramic bottles with an embossed geometric pattern finished in a glossy cobalt blue and accented with polished nickel and crystal finials.



18007 Great Pyramids Black, S/2

S- 3" x 10" x 3", L- 5" x 19" x 5" Set of two ceramic pyramid sculptures are finished in a gloss black glaze, accented by polished nickel plated bands and elegant crystal feet.

18006 Great Pyramids White, S/2

S- 3" x 10" x 3", L- 5" x 19" x 5" Set of two ceramic pyramid sculptures are finished in a gloss white glaze, accented by polished nickel plated bands and elegant crystal feet.



18007



18006



17854 Eanes, S/2

S- 12"x 14"x 2", L- 12"x 17"x 2" Modern earthenware accents feature a gloss black glaze with matte gray accents.

18887 Chanda Sculptures, S/2

S- 7"x 13"x 4", L- 8"x 16"x 4" Reactive glazed ceramic fan sculptures, comprised of blues, greens and bronze, set on tonneau-shaped crystal bases.





17108



17108 Nouveau Sculpture

8" x 15" x 4" Inspired by the clean lines and bold feel of modern art, this sculpture is handcrafted from natural black and white coral.

18013 Gale Sculpture

10" x 27" x 6" Inspired by striking works of modern art, this abstract sculpture is crafted from granulated white marble, accented by an elegant crystal foot and metal accent.

17972 Koa Sculptures, S/2

S- 4" x 16" x 4", L- 4" x 20" x 4" Set of two abstract sculptures made of black granulated marble set atop crystal bases.



18013



17972



17916

17916 Alize Black, S/3

S- 5" x 7" x 5", M- 4" x 10" x 4", L- 4" x 14" x 4"
Elegant black diamonds made of granulated marble atop crystal bases.



17580

17580 Alize, S/3

S- 5" x 7" x 5", M- 4" x 10" x 4", L- 4" x 14" x 4"
Elegant white diamonds made of granulated marble that accurately replicates the look of Thassos marble atop crystal bases.



17871 Coin Toss, S/3

S- 6"x 15"x 3", M- 6"x 19"x 3", L- 6"x 22"x 3"

Contemporary trio features solid white marble rings supported by polished chrome rods and an elegant crystal base.

17835 Neuron, S/3

S- 4"x 8"x 4", M- 6"x 13"x 6", L- 5"x 17"x 5"

This contemporary trio features unique clear glass knot designs accented by polished nickel details and crystal bases.

17710 Cyrene

8"x 15"x 5" Elegant natural stones are set atop crystal bases with polished nickel plated accents.



17557 Ellianna Silver, S/2

S- 6"x 10"x 6", L- 7"x 16"x 7" Crystal spheres elevated on stainless steel bases finished in a brushed, plated silver.

18574 Ellianna, S/2

S- 6"x 10"x 6", L- 7"x 16"x 7" Crystal spheres elevated on stainless steel bases finished in a brushed, plated copper bronze.

17566 Alega, S/2

S- 5"x 6"x 5", L- 6"x 7"x 6" Crystal spheres elevated on steel bases finished in a polished, plated gold.



17557



18574



17566



19975 Stetson Spheres, S/3

S- 7" Rd, M- 9" Rd, L- 12" Rd Dark, aged bronze metal spheres with silver undertones.

20066 Stetson Gold Spheres, S/3

S- 7" Rd, M- 9" Rd, L- 12" Rd Made of iron featuring a lightly antiqued, gold leaf finish.



18708 Aric Sculpture, S/2

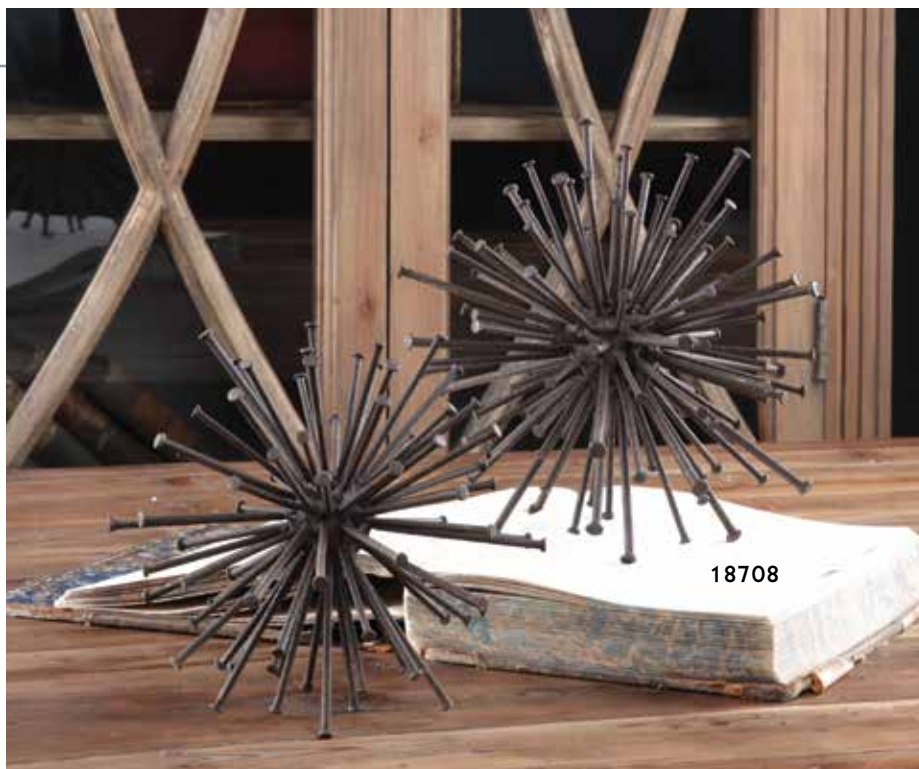
S- 7"x 7"x 7", L- 9"x 9"x 9" Collection of nails creating spheres finished in a rust brown with golden bronze highlights.

20061 Constanza, S/2

S- 10"x 10"x 9", L- 12"x 11"x 10" Metallic gold leaf finish.

17997 Aga Sculptures, S/2

S- 7"x 9"x 7", L- 9"x 10"x 9" Displaying an elevated contemporary feel, these steel objects are finished in an elegant brushed gold atop large crystal bases.



18708



20061



17997



17690

17690 Harlan Objects Black Nickel, S/2

7"x 6"x 7" Set of two, cast aluminum decorative objects feature a black nickel finish.

18964 Harlan Objects Brass, S/2

7"x 6"x 7" Set of two, cast aluminum decorative objects feature a brass finish.

18927 Ayan Sculpture, S/2

S- 8"x 9"x 5", L- 10"x 11"x 6" Interlocking iron finished in a heavily antiqued gold.



18964

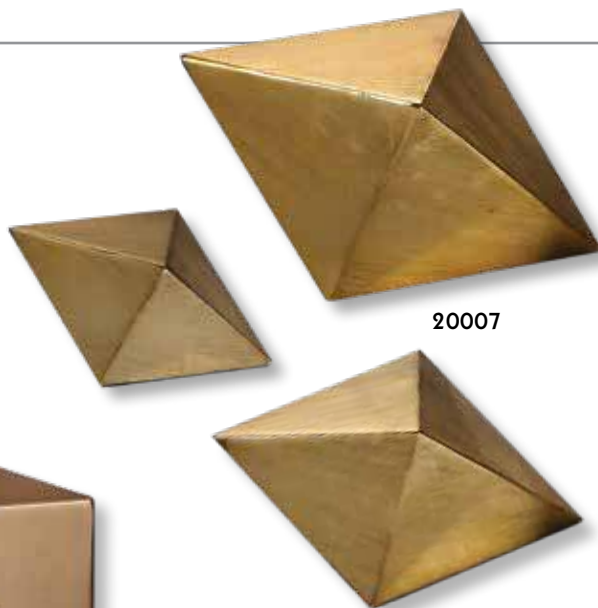


18927





17730



20007

20007 Rhombus Sculptures, S/3

S- 5" x 3" x 3", M- 7" x 4" x 4", L- 8" x 5" x 4"
Decorative, tabletop accessories feature a heavily antiqued champagne finish.

17730 Rooney, S/2

S- 7" x 7" x 4", L- 8" x 9" x 4" Set of two iron cubes finished in antique brushed brass sit atop square crystal bases.

19971 Pentagon Cubes, S/2

S- 8" x 7" x 8", L- 10" x 9" x 10" Brushed, coffee bronze metal pentagons displayed on crystal feet.



19971



20088 Gears Sculpture, S/3

S- 5"x 5"x 2", M- 7"x 7"x 4", L- 9"x 9"x 4"

Industrial design finished in tarnished silver.

18922 Talal Sculpture

9"x 25"x 4" Randomly stacked, crimped edge, cast iron rectangles finished in a lightly antiqued brushed nickel, displayed on a black marble base.





18771



18613



20110

18771 Oja Sculpture

21"x 27"x 6" Metallic gold leaf twisted coil displayed atop a textured, charcoal finished base.

18613 Rilynn Sculpture

11"x 18"x 4" Cast metal ring sculpture with an antique bronze finish and gold highlights, set on a white marble cylinder base.

20110 Speranza Sculpture

20"x 20"x 6" Hand forged metal features an artisan copper finish with a beautifully textured patina. Each piece is uniquely handcrafted, slight variations are normal.



17500

17500 Layan Charger

18"x 21"x 5" Clear, rippled art glass charger featuring a subtle crosshatch texture on the reverse with bright gold accents displayed on a bronze, steel stand with black marble base.

18895 Leyla Sculpture

24"x 30"x 5" Antique bronze sculpture set atop a textured black concrete base.



18895

18576 Saanvi Sculpture

18" x 24" x 6" Antique gold stacked and curved iron rods form this sculpture which appears convex when viewing from one side and concave from the other. The sculpture is displayed on a textured aged black base with gray undertones.

17103 Adilynn Sculpture

26" x 16" x 4" Thick hammered iron rings finished in gunmetal, antique silver and gold.



18576



17103



17980 Orbits Ring Sculpture, Large
20"x 20"x 3"

17913 Orbits Ring Sculptures, S/2
S- 12"x 11"x 2", L- 14"x 14"x 2"

Aluminum accessories showcase a contemporary look with streamlined curves finished in black nickel.



17985 Orbits Ring Sculptures Nickel, S/2
S- 12"x 11"x 2", L- 14"x 14"x 2"

Aluminum accessories showcase a contemporary look with streamlined curves finished in nickel.



17981 Jimena Ring Sculpture, Large
20" x 20" x 3"

18961 Jimena Ring Sculptures, S/2
S- 12" x 11" x 2", L- 14" x 14" x 2"

Aluminum accessories showcase a contemporary look with streamlined curves finished in a clean gold.



18837

18837 Flowering Dandelions Sculpture, S/2

S- 6" x 16" x 5", L- 6" x 21" x 5" An interpretation in metal of flowering dandelions encased in steel frames, finished in an aged black with golden highlights.

17739 Out of Office, S/3

8" x 9" x 4" Trendy yet sophisticated, these brushed brass and white marble accessories are the perfect accent for any office.



17739



17513

17513 Fall Leaves Sculpture

16" x 27" x 5" Inspired by falling fall leaves, this sculpture features cast aluminum leaves finished in an antiqued silver champagne finish displayed on a crystal cylinder base.

17872 Beekeeper Sculpture

9" x 18" x 4" Inspired by a natural honeycomb, this sculpture showcases intricately carved details finished in antique gold and accented by a crystal foot.

20079 Feathers Sculpture, S/3

S- 6" x 10" x 3", M- 3" x 14" x 3", L- 4" x 16" x 3"
With great emphasis on detail, these tabletop accessories feature a metallic gold finish with clear acrylic bases.



17872



20079



19697 Cosma
27"x 15"x 5" Heavily antiqued metallic silver with matte black stand.



17867 Contemporary Lotus Sculpture
26"x 18"x 5" Inspired by lotus flowers, this sculpture is finished in a contemporary silver leaf with noticeable texture and distressed details. The piece is supported by an iron foot finished in matte black.



20134



17759

20134 Three Peas in a Pod Sculpture

20"x 4"x 8" This gorgeous sculpture simulates peas sitting on an open pod, finished in a tarnished, metallic silver with clear crystal spheres.

17759 Pyrite Sculpture

4"x 12"x 4" Unique sculpture showcases a cast pyrite stone, otherwise known as "fool's gold". The sculpture is finished in platinum silver with an elegant crystal base.

20158 Indian Lotus Sculptures, S/2

S- 6"x 5"x 6", L- 6"x 7"x 6" Simple elegance is achieved by these antiqued, metallic silver lotus blooms that appear to be floating on clear crystal cubes.



20158



19280

19280 Music Notes, S/3

S- 5" x 8" x 3", M- 5" x 9" x 3", L- 5" x 12" x 3"
Hand forged metal finished in aged black with a tan glaze and matte black accents.

18841 Bianzhong

19" x 13" x 5" A tabletop interpretation of the ancient Chinese musical instrument, Bianzhong, in which the bells graduate in size to provide a different sound when struck with the mallet. Displayed on a fir wood base.



18841



19947



18614

19947 Propellers Sculpture, S/2

S- 11"x 18"x 4", L- 16"x 21"x 4"

Reproduction boat propellers, a conversation piece in any room. Cast from old propellers, these items show the natural wear and imperfections of the originals. The finish is a rust brown with green tarnish and a gray glaze. The steel base is matte black.

18614 Drop Anchor Sculpture

8"x 10"x 3" Cast metal anchor with an antique silver leaf finish, set on a white marble slab base.



17523



17523 Oyster Shell Sculptures, S/2

S- 5" x 11" x 3", L- 5" x 15" x 3" Cast from natural oyster shells, these sculptures feature an aged ivory finish with chrome accents and set atop staggered height crystal cube bases.

19556 Conch Shell Sculpture, S/2

S- 12" x 8" x 6", L- 18" x 12" x 8" Symbols of the sea are depicted in these sculptures featuring natural looking shells on matte black metal stands.



19556



20091

20091 Starfish Sculpture, S/2

S- 10"x 19"x 4", L- 11"x 24"x 4" Realistic starfish replicas feature a pale, marine green finish and sit atop tarnished silver stands.

19231 Sini Finials, S/2

S- 6"x 12"x 6", L- 7"x 14"x 7" Ceramic finials featuring a heavily distressed, powder blue finish with antiqued khaki undertones.



19231



17548 Cascara Sculpture

6" x 10" x 6" This decorative sphere is handcrafted with faux sea shells, featured with polished nickel plated accents and cylinder shaped crystal base.

18888 Nautilus Shell Sculpture

11" x 9" x 8" An oversized nautilus shell, cast with a granulated marble that accurately replicates the look of Thassos marble and set on a crystal base.





19976



19910

19976 Blade Coral

20"x 12"x 11" Lifelike coral in textured white, mounted on a matte black base.

19910 Hard Coral Sculpture, S/2

S- 6"x 5"x 6", L- 7"x 6"x 7" Textured cream finish accented by a crystal base.

18601 Red Coral Cluster Sculpture

7"x 8"x 7" The body is cast directly from a rare red coral cluster, seated on a large crystal cube.



18601



20186 Paol

29" x 13" x 4" Natural mango wood log displayed on a matte black base. Each piece is handcrafted making it unique. Sizes will vary. Cracks and variations in the grain are normal.



17992

17992 Goa Sculpture

16" x 20" x 4" Natural mango wood pulley wheel displayed on a matte black iron base. Each piece is handcrafted making it unique. Sizes may vary slightly. Cracks and variations in the grain are normal.



19822 Ashlea Sculptures, S/2

S- 13" x 19" x 4", L- 15" x 21" x 3" Natural mango wood logs on matte black metal bases.



19822



18767

18767 Teak Branches, S/3

S- 5" x 30" x 5", M- 5" x 36" x 5", L- 5" x 40" x 5" Warm white finish on teak wood branches with fossil gray finish on base. Each will vary in size and shape due to being uniquely handcrafted. Cracks and variations in grain are normal.

20107 Ermanno Teak Balls, S/2

S- 12" Rd, L- 16" Rd This set of decorative teak balls, will bring a rustic and warm atmosphere to any bare corner, balcony or terrace. Beautifully handcrafted and finished with a pale gray glaze. Each will vary in size due to being uniquely handcrafted. Cracks and variations in grain are normal.



20107



19613 Brisco Finials, S/2

S- 6"x 14"x 6", L- 8"x 18"x 8" Made from carved solid wood, these finials feature a natural wood tone finish.

18847 Nalini Finials, S/2

S- 5"x 22"x 5", L- 5"x 27"x 5" Carved mango wood finials finished in a light charcoal stain with antique gold highlights.





20121

20121 Hold My Hand Sculpture

9"x 3"x 5" Antiqued gold leaf, cast iron sculpture of hands, forever intertwined, remind us of the comfort and joy physical connection brings.

19446 Summer Days Sculpture

17"x 6"x 4" Heavily textured, antiqued bronze finish.

17987 Friendship Sculpture

10"x 11"x 6" Handcrafted iron sculpture is finished in rustic gold with noticeable texture atop a matte black finished base.



19446



17987



19488

19488 Freedom Rider Figurine

15" x 13" x 10" Metal figurine finished with a sage green finish with rust colored highlights.

19445 At Play Sculpture

10" x 11" x 3" This statue depicts one of the fun and special times between a mother and her child. This is made from hand beaten iron with a heavily antiqued chestnut finish.

19439 Family Circles Figurine

13" x 14" x 6" This statue symbolizes the unity of family and is finished in a bronze patina.



19445



19439



20062

20062 Musical Ensemble Figurines, S/3

S- 5"x 10"x 6", M- 7"x 13"x 6", L- 6"x 15"x 5"
Artistic musicians hard at work. Musicians are cast in aluminum, and feature a textured, silver plated finish. Each musician is resting on a matte black base, perfect for a coffee table conversation piece, a bookshelf or foyer table.

19061 Musicians Figurines, S/3

S- 5"x 15"x 5", M- 6"x 15"x 4", L- 5"x 18"x 5"
These fun statues are finished in slate gray with silver plated accents and dark chestnut brown bases.



19061

19675 Practice Shot Figurines, S/2

S- 7"x 15"x 4", L- 7"x 16"x 3" Metallic silver figurines with a matte black glaze.

19502 Dahy Statues, S/2

S- 11"x 14"x 6", L- 20"x 13"x 5" Features an antiqued silver finish.



19675



19502



18581



20309



18992

18581 Jaylene Figurines, S/2

S- 8" x 16" x 7", L- 7" x 18" x 5"

Tarnished silver figurine sculptures with crystal accents and steel cube bases.

20309 Hera Sculpture

12" x 28" x 7" This sculpture is made of hand forged metal and has a nickel plated finish. Base is matte black.

18992 Courtship Figurine

10" x 19" x 7" Porous textured figurine finished in a lightly antique nickel finish.



17597

17597 Stand Together Figurine

21" x 19" x 3" Textured figurines with an appearance of hand molding, finished in a heavily aged gold and displayed on a porous aged black base.

18008 Two's Company Sculpture

4" x 20" x 4" Solid cast iron sculpture features intricate molded details in a hand applied antique brass and rustic dark bronze finish.



18008

18991 Camaraderie Figurine

15" x 10" x 4" Textured figurines with an appearance of hand molding finished in a heavily aged silver displayed on a porous textured, aged black base.



18991



20120

20120 Hello Friend Sculpture

9"x 10"x 4" This playful, cast iron, sculpture features a dark brown horse with light bronze tipping turned to greet the antique gold bird that has positioned itself on his back. This will add a cheerful addition to any setting.



17514

17514 Titan Horse Sculpture

14"x 17"x 5" Heavily textured horse sculpture finished in a heavily antiqued bronze with dark brown glaze standing on a concrete inspired base.



17585 Caballo Dorado Sculpture

14"x 17"x 5" Horse sculpture in aged silver with subtle gold accents on a black iron stand.

18921 Phoenix Sculpture

19"x 18"x 7" Lightly antiqued, brushed nickel plated prancing horse set on a black marble base.



18603 Songbirds Sculpture

11" x 13" x 2" Two cast brass, stylized songbirds counterpoised on a white marble sling base.

19936 Birds on a Limb Sculpture

12" x 18" x 6" A sculpture featuring twisted wrought iron tree limbs with bright, metallic gold birds.



18603



19936

18898 Passerines Figurines, S/2

S- 6"x 10"x 5", L- 7"x 13"x 6" Antiqued, gold leaf perched bird figurines displayed on crystal bases.

18798 Flock of Seagulls Sculpture

24"x 16"x 8" Flock of seagulls, finished in a metallic gold leaf, flying above an aged black distressed wood base.



18898



18798



17874



18944

17874 Overseer Sculpture

7" x 18" x 5" Traditional and elegant, this peacock sculpture features a champagne silver bird atop a white marble column with a black marble base.

18944 Admiration Sculpture

15" x 19" x 4" Lightly antiqued metallic silver leaf birds displayed on a mingled bronze and black iron base.



19473

19473 Playful Pachyderms Figurine

16" x 16" x 8" Antiqued bronze patina with gray glaze and matte black base. Comes with one box and two figurines that may be placed with trunks entwined or not.

17968 Kyan Elephant Sculptures, S/2

S- 8" x 6" x 4", L- 11" x 8" x 5" Set of two elephant sculptures feature a lightly textured ceramic with crackled glaze finished in an ombre, light antique sand with crystal bases.



17968



19948 Tyrannosaurus Sculpture

19"x 20"x 11" Chestnut brown with a heavy gray glaze and matte black base.

17522 Masai Giraffe Figurines, S/2

S- 5"x 15"x 3", L- 5"x 21"x 3" Set of two giraffe figurines feature a molded clay texture with an antique plated metallic silver finish and set atop lightly antiqued concrete bases.





19888

19888 Maximus Figurine

9" x 13" x 4" Heavily distressed cast iron dog figurine with golden bronze highlights.

19058 Colorful Cows Figurines, S/3

S- 5" x 5" x 2", M- 8" x 7" x 4", L- 10" x 8" x 4" These whimsical accessories are made of metal and finished in multiple tones of green, red, blue and orange with silver plated metal accents.



19058



19596



19596 Lounging Reader Bookends, S/2
8" x 10" x 4" These whimsical bookends feature an antiqued silver leaf finish with a light gray glaze.

19643 Bulldogs Bookends, S/2
4" x 7" x 3" These adorable bookends are made of cast iron and finished in heavily, distressed golden bronze with a dark gray glaze.



19643





17865



17864



17549

17865 Tilman Bookends, S/2

8"x 8"x 4" Modern and sophisticated, these bookends feature black marble accents with white veining, accented by brushed nickel finished steel and crystal accents.

17864 Clarin Bookends, S/2

7"x 8"x 4" These contemporary bookends feature clean, white and gray marble motifs with elegant crystal details.

17549 Charbel Bookends, S/2

S- 5"x 9"x 8", L- 6"x 9"x 8" Set of two bookends featuring textured faux white coral on crystal bases.



18567 Daria Photo Frames, S/3

S- 6"x 8", M- 8"x 10", L- 12"x 14" Display those special photos in these sophisticated frames made of antiqued, beveled mirrors accented with an aged pecan stained solid wood outer frame. Holds photo sizes: 4x6, 5x7 and 8x10.





18796 Gold Branches Decorative Fireplace Screen
47" x 32" x 6" Hand forged, hammered iron branches
with bright gold leaf finish.



18707

18707 Rosen Fireplace Screen

53" x 34" Forged iron finished in lightly antiqued gold leaf. Center panel is 26" wide, and the side panels are each 13" wide.

17982 Rosen Fireplace Screen, Black

53" x 34" Forged iron fireplace screen features a geometric design in a satin black finish. The center panel is 26" wide, and the side panels are each 13" wide.



17982



20072 Armino Fireplace Screen
 51" x 30" Decorative, iron fireplace screen features a lightly antiqued silver leaf finish. Center panel is 26" wide, and each side panel is 13" wide.



20072



UTTERMOST

553



60177

60177 Evarado Aloe Planter

17" x 30" x 17" A contemporary aloe vera statement piece, accented with natural stones set into a glossy white textured bowl.

60182 Belmonte Floral Bouquet

14" x 13" x 12" Modern floral bouquet features a unique mix of berries, greenery, seed pods, succulents and cream roses in a clear glass bud vase with faux water.



60182

60173 Alverio Succulents

10" x 12" x 10" A contemporary desert garden mix of succulents accented with an arid bed of natural pebbles in a mottled charcoal gray concrete planter.



60173

60174 Charita Succulents

30" x 10" x 10" A lush mix of succulents in varying tones of greens and burgundy over a faux soil mixture, filling a solid concrete container resembling a life-like driftwood log.



60174



60115



60119

60119 Salar Succulents

22"x 20"x 12" Dense and lush mix of succulent plants including aloe, jade, bromeliad, string of pearls and others in a hand carved, natural teak bowl.

60115 La Costa Greenery, S/3

S- Floret Aeonium 5"x 5"x 5", M- Jade Succulent 8"x 10"x 8", L- Yucca Grass 18"x 15"x 18" Arid trio of succulents and yucca grass in aged ivory, ceramic pottery with dark gray tipping and a light tan wash.

60180 Kinsale Moss Centerpiece

19"x 7"x 9" Beautifully preserved mounds of moss placed in a natural teak wood bowl. Because each is individually handcrafted, sizes may vary. Cracks and variations in the grain are natural to this type of wood.

60193 Canal Moss Centerpiece

34"x 5"x 3" Perfectly preserved mounds of moss are placed together in an elongated aluminum footed tray finished in a colorful oxidized bronze.



60180



60193





60148

60148 Ceci Kitchen Herbs, S/4

S- 7"x 13"x 7", M- 9"x 13"x 8", L- 7"x 14"x 6", XL- 12"x 16"x 10"

A collection of kitchen herbs each placed in a clear glass bud vase with natural stones and faux water. Includes parsley, basil, oregano, and rosemary.

60146 Aldis Potted River Birch

19"x 78"x 17" Life-like river birch stems creating a minimalist modern statement featuring faux moss and an aged stone finished concrete urn.

60149 Hala Silk Centerpiece

22"x 15"x 14" A structural statement centerpiece featuring a twisted faux branch wrapped with various succulent and orchids, placed in a clear glass bowl with natural stones and faux water.



60146



60149



60164



60181

60181 Ibero Split Leaf Palm

30" x 30" x 30" Contemporary split leaf palm trio artfully arranged in a clear glass cylinder vase with natural stones and faux water.

60164 Urbana Fiddle Leaf Fig

24" x 36" x 18" A staple across many design styles, this fiddle leaf fig branch is placed in a contemporary clear glass cylinder vase with natural stones and faux water.

60179 Mari Calla Accent

24" x 18" x 24" Variegated calla lily foliage accented by a bed of naturally preserved moss in a beautifully oxidized metal planter.



60179



60194



60192



60190

60194 Dracaena Planter

20" x 18" x 20" This stylish accent features a lush variegated dracaena grass in a contemporary gray concrete planter.

60192 Puebla Greenery, S/3

S- 6" x 7" x 6", M- 7" x 8" x 7", L- 22" x 16" x 22" Succulent and spider plant trio are accented by naturally preserved moss in hand carved blue and white ceramic planters.

60190 Positano Lemon Accent

14" x 12" x 14" A refreshing bunch of budding lemon stems is accented by a bed of naturally preserved moss, placed in a contemporary dimpled white ceramic pot. Container is 5"W x 5"H x 5"D.



60185



60191

60185 Fasita Planter

15"x 44"x 15" Accent your space with this life-like snake plant, featuring a contemporary antique brass pot nested in a matte black metal stand. Stand is a separate piece and allows for the pot to be displayed directly on a surface.

60191 Seabrook Floral Bouquet

24"x 18"x 14" A fresh spring bouquet of magnolias, green hydrangea blooms, and white cherry blossom branches are arranged in a stylish gold finished hammered metal vase.

60175 Eponine Orchid

14" x 34" x 6" A gracefully arching stem of white orchids over a bed of faux potting soil, placed in a contemporary mottled charcoal gray concrete planter.

60189 Cami Orchid, Brass

14" x 24" x 8" A gracefully arching stem of white orchids with reindeer moss accents over a bed of naturally preserved moss, placed in a contemporary hammered brass metal pot. Container is 5"W x 5"H x 5"D.



60189



60175

60178 Cami Orchid

14" x 24" x 8" A gracefully arching stem of white orchids with reindeer moss accents over a bed of naturally preserved moss, placed in a contemporary textured white ceramic pot. Container is 5" W x 5" H x 5" D.

60122 Kaleama Orchids, White

15" x 33" x 10" Gracefully arching stems of white orchids atop a bed of moss, nestled in a glass mirrored cube container. Base is 6" x 6".

60156 Kimbry Tulip Centerpiece

24" x 18" x 16" Featuring a dramatic spread of white tulips, meticulously placed into an oval glass vase complete with faux water.



60122



60178



60156



60128



60128



60141



60145

60128 Quince Blossoms Silk Centerpiece

30"x 36"x 30" Effortlessly arranged as if freshly harvested, these quince branches exemplify the true characteristics of live blooms. Varying in stages of openness, cream buds are accented by natural rocks in a clear glass vase.

60141 Etta Hyacinth Bouquet

14"x 16"x 8" Displaying life-like characteristics, this silk arrangement features vibrant Mediterranean blue hyacinths neatly arranged in an oval glass vase with faux water.

60145 Blaire Peony Bouquet

10"x 9"x 10" A sweet mix of lush pink and cream peony cuttings placed in a round, clear glass vase with faux water.



60039



60155



60144

60039 Moth Orchid Planter

19"x 34" x 19" Hand painted, natural brown dish garden of white moth orchids planted in permanent soil with mixed foliage from the orchid family.

60155 Cecily Hydrangea Bouquet

15"x 11" x 13" Capturing the essence of transitional decor, with large cream and sage hydrangea blooms paired with rose cuttings and rosehip buds, placed into a square glass vase with natural stones and faux water.

60144 Celia Silk Magnolia Accent

13" x 12" x 9" A Southern staple, this large magnolia blossom is placed in an asymmetrical, clear glass vase with faux water and natural stones.

60107 Preserved Boxwood Oval Domes, S/2

S- 10"x 8" x 6", L- 14"x 12" x 8" Preserved while freshly picked, natural evergreen foliage looks and feels like living boxwood potted in mossy, stone finished terracotta planters. Indoor use only.



60107



60095



60111



60106



60108

60095 Preserved Boxwood Tree Topiary

14" x 33" x 14" Preserved while freshly picked, natural evergreen foliage looks and feels like living boxwood. Single topiary is potted in mossy stone finished terracotta planter. Indoor use only.

60111 Preserved Boxwood Cone Topiary

9" x 29" x 9" Preserved, natural evergreen foliage potted in a light stone finished, ceramic planter. Indoor use only.

60106 Preserved Boxwood Two Sphere Topiary

10" x 36" x 10" Natural evergreen foliage preserved while freshly picked, looks and feels like living boxwood. Double spheres arranged on wooden twigs, potted in a mossy stone finished terracotta planter. Indoor use only.

60108 Preserved Boxwood Willow Topiary

15" x 17" x 9" Preserved while freshly picked, natural evergreen foliage looks and feels like living boxwood arranged atop willow branches in a mossy, stone finished terracotta planter. Indoor use only.



60187



60187



60139



60188

60187 Preserved Boxwood Square Topiaries, S/2

6"x 19"x 6" Natural evergreen foliage preserved while freshly picked, looks and feels like living boxwood. Supported by natural willow branches, two square topiaries are potted in contemporary ball footed planters finished in satin black. Indoor use only.

60139 Cypress Cone Topiary

8"x 36"x 8" Wispy sprays of cypress foliage, preserved while freshly picked to maintain the life-like evergreen quality, set into a ribbed terracotta pot finished in an aged dark gray. Indoor use only.

60188 Preserved Boxwood Rectangular Topiary

13"x 18"x 6" Natural evergreen foliage preserved while freshly picked, looks and feels like living boxwood. Supported by natural willow branches, the rectangular topiary is potted in a contemporary ball footed planter finished in satin black. Indoor use only.



60172

60172 Cypress Triple Topiary

8"x 43"x 8" Wispy sprays of cypress foliage, preserved while freshly picked to maintain the life-like evergreen quality, set into an aged gray finished terracotta pot. Indoor use only.

60140 Cypress Cone Topiaries, S/2

S- 4"x 15"x 4", L- 5"x 18"x 5" Wispy sprays of cypress foliage, preserved while freshly picked to maintain the life-like evergreen quality, set into aged stone finished terracotta pots. Indoor use only.

60176 Cypress Globes, S/2

S- 6"x 11"x 6", L- 9"x 14"x 9" Wispy sprays of cypress foliage, preserved while freshly picked to maintain the life-like evergreen quality, set into aged stone finished terracotta pots. Indoor use only.



60176



60140



