

# accessories

## 2021





# accessories numerical index

Item	Description	Page	Item	Description	Page	Item	Description	Page
17079	Lying Lotus Candleholder	427	17730	Rooney, S/2	459	18574	Elianna, S/2	460
17085	Teak Leaf Bowl	409	17731	Kiernan Candleholder	443	18576	Saanvi Sculpture	456
17094	Tamarine Bowl	409	17732	Talmage Tray	419	18577	Ameera Candleholder	447
17099	Ellie Candleholder	449	17733	Dakuba Sculpture	465	18581	Jaylene Figurines, S/2	477
17103	Adilynn Sculpture	452	17734	Daelan Candleholders, S/2	431	18601	Red Coral Cluster Sculpture	475
17104	Kase Candleholder	488	17737	Como Vases, S/2	397	18602	Autograph Tree Candleholder	441
17105	Rayne Candleholder	435	17738	Foal Sculpture	485	18603	Songbirds Sculpture	488
17107	Brixton Bowl	407	17739	Out of Office, S/3	460	18613	Rilynn Sculpture	450
17500	Layan Charger	454	17740	Lenape Bottles, S/2	385	18614	Drop Anchor Sculpture	474
17506	Lily Bookends, S/2	493	17741	Adrie Vases, S/2	398	18615	Oak Leaf Bowl	413
17510	Dash Candleholders, S/2	431	17742	Sutton Candleholders, S/2	442	18621	Leah Bottles, S/2	380
17513	Fall Leaves Sculpture	457	17743	Chikasha Bowl	408	18633	Mathias Bottles, S/3	386
17514	Titan Horse Sculpture	483	17744	Chikasha Bowl - Large	408	18643	Claire Candleholders, S/2	436
17515	Seahorse Candleholder	446	17745	Dua Vases, S/2	406	18645	Leslie Candleholders, S/2	436
17517	Tala Candleholders, S/2	440	17746	Ilini Candleholders, S/2	445	18647	Isha Sculpture	487
17518	Karter Candleholders, S/3	430	17751	Villa Vases, S/2	405	18654	Typesetting Box	426
17520	Tinley Bowls, S/2	397	17752	Menja Bowl	406	18706	Balkan Tray	421
17521	Korbin Vases, S/2	399	17753	Saman Bowls, S/2	408	18707	Rosen Fireplace Screen	498
17522	Masai Giraffe Figurines, S/2	486	17755	Faraday Candleholder	433	18708	Aric Sculpture, S/2	451
17523	Oyster Shell Sculptures, S/2	473	17758	Eira Tray	418	18709	Pina Candleholders, S/3	435
17526	Klara Bottles, S/2	388	17759	Pyrite Sculpture	463	18711	Aura Vases, S/2	395
17527	Milla Vases, S/2	389	17762	Ione Vases, S/2	399	18719	Minta Box	426
17529	Gallah Candleholder	444	17763	Azariah Bowls, S/2	412	18722	Cholla Wood Sculpture	471
17530	Genaro Candleholder	446	17765	Ambretta Bowls, S/2	411	18723	Karis Boxes, S/2	424
17531	Equine Sculpture	484	17766	Cyprien Containers, S/2	384	18731	Essie Bowls, S/2	411
17536	Tenzin Bowl	412	17779	Cassiopeia Candleholders, S/3	445	18741	Invano Vases, S/2	393
17545	Hayworth Containers, S/2	381	17780	Ariga Vase	400	18749	Reine Tray	422
17546	Castiel Candleholders, S/2	437	17834	Montag Candleholders, S/2	433	18759	Benigna Candleholder	447
17548	Cascara Sculpture	476	17835	Neuron, S/3	462	18766	Eugenio Candleholders, S/2	428
17549	Charbel Bookends, S/2	491	17836	Lalique Box	424	18767	Teak Branches, S/3	469
17550	Garson Figurines, S/3	464	17837	Cable Chain Tray	420	18770	Rafaela Tray	417
17552	Charvi Candleholders, S/2	432	17840	Storm Bottles, S/2	382	18771	Oja Sculpture	455
17556	Leading The Way Candleholder	446	17841	Mellita Bottles, S/2	381	18776	Ruth Boxes, S/2	425
17557	Elianna Silver, S/2	461	17842	Almera Bottles, S/2	387	18781	Romeo Containers, S/2	384
17559	Elio Sculpture	456	17843	Lulu Vases, S/2	398	18796	Gold Branches Decorative Fireplace Screen	497
17560	Kyrie Candleholders, S/2	442	17844	Capri Vases, S/2	399	18798	Flock of Seagulls Sculpture	489
17561	Lucian Candleholders, S/2	443	17845	Matcha Vases, S/2	400	18818	Karun Candleholders, S/2	429
17562	Prabal Sculpture	468	17854	Eanes, S/2	467	18835	Durga Candleholders, S/2	434
17564	Esme Candleholders, S/2	443	17855	Iroquois Bowl	412	18837	Flowering Dandelions Sculpture, S/2	450
17565	Eugenie Tray	418	17856	Clear Sky Vase	392	18838	Ukti Boxes, S/2	424
17566	Alega, S/2	460	17857	Custin Vase	391	18841	Bianzhong	472
17567	Elizer Candleholder	432	17864	Clarín Bookends, S/2	491	18844	Mercede Vases, S/3	400
17568	Yarina Candleholder	435	17865	Tilman Bookends, S/2	491	18847	Nalini Finials, S/2	495
17570	Angelou Vases, S/2	390	17866	Amhara Vases, S/2	396	18848	Badal Candleholders, S/2	438
17577	Zosia Bowls, S/2	410	17867	Contemporary Lotus Sculpture	465	18850	Asmita Bowl	414
17578	Ciji Vases, S/2	389	17868	Klara White Bottles, S/2	388	18857	Rutva Vases, S/2	405
17579	Ciji Bowl	410	17869	Makira, S/3	467	18859	Ragini Vases, S/2	404
17580	Alize, S/3	453	17870	Carmen Containers, S/2	381	18861	Kasen Vases, S/2	404
17583	Almanzora Candleholders, S/2	445	17871	Coin Toss, S/3	462	18868	Kenley Vases, S/2	390
17585	Caballo Dorado Sculpture	483	17872	Beekeeper Sculpture	457	18886	Varuna Bottles, S/2	387
17593	Caryn Trays, S/2	415	17873	Strathmore Candleholders, S/2	430	18887	Chanda Sculptures, S/2	466
17594	Roderick Trays, S/3	415	17874	Overseer Sculpture	488	18888	Nautilus Shell Sculpture	473
17596	Minta Box	454	17875	Delft Bowl	410	18895	Leyla Sculpture	455
17597	Stand Together Figurine	480	17876	Ciji Aqua Vases, S/2	389	18898	Passerines Figurines, S/2	489
17598	Gretchen Vase	403	17877	Kona Bowl	407	18900	Hive Box	423
17690	Harlan Objects Black Nickel, S/2	453	17878	Nomad Vases, S/2	393	18903	Carly Tray	420
17710	Cyrene	462	17879	Rastia Bowl	407	18911	Ari Tray	417
17711	Riordan Vases, S/2	395	17880	Shooting Star, S/2	461	18912	Pulley System	471
17715	Sconset Vases, S/3	392	17881	Sandringham Candleholders, S/2	437	18920	Carma Candleholders, S/2	437
17716	Natchez Vases, S/3	394	17882	Deane Candleholders, S/2	431	18921	Phoenix Sculpture	485
17717	Lockwood Vases, S/2	396	17883	Gatsby Bottles, S/2	383	18922	Talal Sculpture	463
17718	Aponi Bowls, S/2	407	17912	Riad Candleholder	434	18923	Arnav Bottles, S/2	383
17719	Bixby Vases, S/2	391	17913	Orbits Ring Sculptures, S/2	452	18924	Kallie Vases, S/3	383
17720	Keone Vase	392	17916	Alize Black, S/3	453	18925	Arpana Bottles, S/2	386
17721	Ortun Vase	393	18564	Ambrosia Photo Frames, S/3	496	18926	Callum Candleholder	448
17722	Guevara Vases, S/2	394	18567	Daria Photo Frames, S/3	496	18927	Ayan Sculpture, S/2	458
17724	Nephele Box	425				18929	Chandran Containers, S/2	388
17727	Tamarind Bowls, S/2	409				18936	Dhara Bottles, S/2	384
17729	Cessair Bottles, S/2	382						



# accessories numerical index

Item	Description	Page	Item	Description	Page	Item	Description	Page
18938	Cayson Bottles, S/2.....	385	19975	Stetson Spheres, S/3.....	451	60176	Cypress Globes, S/2.....	508
18944	Admiration Sculpture.....	487	19976	Blade Coral.....	475	60177	Evarado Aloe Planter.....	500
18950	Dough Tray.....	415	19997	Bechet Tray.....	419	60178	Cami Orchid.....	506
18952	Myah Candleholder.....	438	20007	Rhombus Sculptures, S/3.....	458	60179	Mari Calla Planter.....	501
18953	Ruhi Hurricane Candleholders, S/2.....	439	20044	Nicia Candleholder.....	434	60180	Kinsale Moss Centerpiece.....	501
18954	Neev Decanter.....	382	20057	Ettore Tray.....	420	60181	Ibero Split Leaf Palm.....	501
18955	Alya Bowl.....	414	20061	Constanza, S/2.....	459	60182	Belmonte Floral Bouquet.....	504
18957	Anas Bowls, S/3.....	414	20062	Musical Ensemble Figurines, S/3.....	478			
18958	Amina Candleholders, S/3.....	440	20066	Stetson Gold Spheres, S/3.....	459			
18959	Kaylie Vase.....	402	20072	Armino Fireplace Screen.....	498			
18961	Jimena Ring Sculptures, S/2....	452	20074	Camilla Tray.....	417			
18962	Amna Vases, S/4.....	402	20076	Annabella Bottles, S/2.....	380			
18964	Harlan Objects, S/2.....	453	20079	Feathers Sculpture, S/3.....	457			
18965	Kyler Vases, S/2.....	401	20084	Carla Vases, S/2.....	398			
18967	Noa Vases, S/2.....	403	20088	Gears Sculpture, S/3.....	464			
18973	Lianna Candleholders, S/2.....	439	20090	Valerio Bookends, S/2.....	493			
18979	Amal Candleholder.....	433	20091	Starfish Sculpture, S/2.....	476			
18986	Luka Hurricane Candleholder.....	429	20107	Ermanno Teak Balls, S/2.....	469			
18988	Zayan Vases, S/2.....	391	20110	Speranza Sculpture.....	449			
18989	Saniya Containers, S/2.....	387	20120	Hello Friend Sculpture.....	483			
18990	Epeius Horse Statue.....	484	20121	Hold My Hand Sculpture.....	481			
18991	Camaraderie Figurine.....	480	20131	Faustina Boxes and Tray, S/4.....	423			
18992	Courtship Figurine.....	482	20134	Three Peas in a Pod Sculpture.....	465			
18993	Origami Bird Figurines, S/2....	488	20156	Sara Vases, S/2.....	390			
18994	Aliso Candleholders, S/2.....	428	20158	Indian Lotus Sculptures, S/2....	461			
18997	Mika Tray.....	416	20177	Rachele Tray.....	418			
19025	Alanna Finials, S/2.....	495	20186	Paol.....	470			
19058	Colorful Cows Figurines, S/3....	486	20187	Cierra Vases, S/2.....	401			
19061	Musicians Figurines, S/3.....	478	20188	Darla Vases, S/2.....	402			
19080	Suzuha Finial.....	494	20309	Hera Sculpture.....	477			
19217	Prancing Horse Sculpture.....	484	20605	Fedora Candleholder.....	427			
19231	Sini Finials, S/2.....	466	20930	Rae Bottle.....	380			
19280	Music Notes, S/3.....	472	60039	Moth Orchid Planter.....	506			
19439	Family Circles Figurine.....	481	60095	Preserved Boxwood Tree Topiary.....	510			
19445	At Play Sculpture.....	482	60106	Preserved Boxwood Two Sphere Topiary.....	510			
19446	Summer Days Sculpture.....	481	60107	Preserved Boxwood Oval Domes, S/2.....	510			
19473	Playful Pachyderms Figurine....	486	60108	Preserved Boxwood Willow Topiary.....	510			
19488	Freedom Rider Figurine.....	482	60111	Preserved Boxwood Cone Topiary.....	510			
19502	Dahy Statues, S/2.....	479	60115	La Costa Greenery, S/3.....	501			
19547	Freya Containers, S/2.....	386	60116	Sea Coast Succulents.....	499			
19556	Conch Shell Sculpture, S/2.....	473	60119	Salar Succulents.....	499			
19562	Sorel Candleholder.....	441	60122	Kaleama Orchids, White.....	506			
19596	Lounging Reader Bookends, S/2.....	492	60128	Quince Blossoms Silk Centerpiece.....	504, 505			
19613	Brisco Finials, S/2.....	494	60139	Cypress Cone Topiary.....	509			
19618	Neelab Boxes, S/2.....	425	60140	Cypress Cone Topiaries, S/2.....	509			
19643	Bulldogs Bookends, S/2.....	492	60141	Etta Hyacinth Bouquet.....	503			
19669	Lican Box.....	426	60144	Celia Silk Magnolia Accent....	504			
19675	Practice Shot Figurines, S/2....	479	60145	Blair Peony Bouquet.....	503			
19697	Cosma.....	468	60146	Aldis Potted River Birch.....	508			
19725	Abila Tray.....	422	60148	Ceci Kitchen Herbs, S/4.....	502			
19727	Acela Tray.....	422	60149	Hala Silk Centerpiece.....	502			
19731	Ribbon Candleholder.....	441	60150	Tassos Potted Olive.....	508			
19787	Aniani Tray.....	416	60155	Cecily Hydrangea Bouquet....	504			
19800	Clam Shell Bowl.....	413	60156	Kimbry Tulip Centerpiece.....	503			
19822	Ashlea Sculptures, S/2.....	470	60157	Mabry Fern Centerpiece.....	502			
19825	Kadam Vases, S/2.....	385	60164	Urbana Fiddle Leaf Fig.....	503			
19826	Rajata Vases, S/3.....	403	60172	Cypress Triple Topiary.....	509			
19828	Kra Candelabra.....	448	60173	Alverio Succulents.....	500			
19862	Smoked Leaf Tray.....	416	60174	Charita Succulents.....	500			
19888	Maximus Figurine.....	490	60175	Eponine Orchid.....	507			
19910	Hard Coral Sculpture, S/2.....	475						
19912	Nicoline Tray.....	421						
19936	Birds on a Limb Sculpture.....	489						
19947	Propellers Sculpture, S/2.....	474						
19948	Tyrannosaurus Sculpture.....	490						
19957	Lucy Candleholders, S/2.....	439						
19967	Let's Graze Sculptures, S/2....	485						
19971	Pentagon Cubes, S/2.....	458						
19972	River Boat Bowl.....	413						





18621



20076



20930

**18621 Leah Bottles, S/2**

S- 6"x 13"x 6", L- 7"x 16"x 7" Pale blue bubble glass containers with stepped polished nickel and crystal cylinder stoppers.

**20076 Annabella Bottles, S/2**

S- 3"x 15"x 3", L- 4"x 19"x 3" Thick, textured teal green glass that features ornate, coffee bronze metal stoppers. For decorative purposes only.

**20930 Rae Bottle**

11"x 19"x 4" Sky blue iridescent glass bottle with blue sugar spun accents and a brushed nickel plated removable lid with blue agate stone displayed in the center of the iron circle.





17870

**17870 Carmen Containers, S/2**

S- 6"x 18"x 6", L- 6"x 22"x 6" Made with gray seeded glass, these containers may serve as stylish accessories or useful storage. Each has an elegant gray and white marble lid with a brushed nickel accent.

**17545 Hayworth Containers, S/2**

S- 6"x 18"x 6", L- 6"x 22"x 6" Made with clear seeded glass, these containers may serve as stylish accessories or useful storage. Each has an elegant white marble lid with a brushed brass accent.

**17841 Mellita Bottles, S/2**

S- 8"x 20"x 8", L- 10"x 14"x 10" A nod to classic coastal style, these bottles feature an aqua blue art glass exterior with sand dollar lid accents finished in aged gunmetal.



17545



17841





17840



18954

**17840 Storm Bottles, S/2**

S- 9"x 15"x 9", L- 6"x 18"x 6" Crafted from art glass, these bottles showcase a unique, heavy texture and are finished in neutral shades of charcoal, taupe, and silver. Each is accented by a brushed nickel finished iron top.

**18954 Neev Decanter**

5"x 16"x 5" Copper bronze luster glass decanter with a heavily antiqued gold finish on the open iron pattern of the base and stopper.

**17729 Cessair Bottles, S/2**

S- 5"x 8"x 5", L- 7"x 10"x 7" Set of two art glass bottles feature organic texture with an iridescent blue-gray hue. Each bottle is paired with a brushed brass plated lid and crystal accent.



17729





17883

**17883 Gatsby Bottles, S/2**

S- 10"x 11"x 10", L- 6"x 17"x 6" Set of two ceramic bottles showcase a subtle ribbed texture, finished in bright silver leaf with crystal and brushed nickel accents.



18923

**18923 Arnav Bottles, S/2**

S- 7"x 14"x 7", L- 9"x 16"x 9" Ceramic bottles, with matte black hand-scored bodies, golden metallic glazed necks, and shaped crystal finials.

**18924 Kallie Vases, S/3**

S- 10"x 7"x 5", M- 9"x 9"x 5", L- 8"x 13"x 5" Roughcast ceramic vases, dipped from the top in a metallic golden glaze. Each vessel is set on metal ball feet.



18924





18936

**18936 Dhara Bottles, S/2**

S- 7"x 20"x 7", L- 7"x 23"x 7" Subtle, mesh textured ceramic finished in a light taupe glaze with lift-off brushed nickel plated finials.

**18781 Romeo Containers, S/2**

S- 7"x 18"x 7", L- 6"x 21"x 6" Crackled, tan ceramic with light gray glaze accented by crystal bases and cast aluminum removable finials. Due to the nature of fired glazes on ceramic, finishes will vary slightly, and are part of their unique charm.

**17766 Cyprien Containers, S/2**

S- 9"x 9"x 9", L- 6"x 19"x 6" Ceramic containers feature carved detailing and are finished in off-white and smoke gray crackle glazes with respective aged gold and brushed nickel finished lids.



18781



17766





17740



19825

**17740 Lenape Bottles, S/2**

S- 6"x 11"x 6", L- 7"x 12"x 7" Set of two ceramic bottles showcase a tribal design in a cream, light blue, and taupe colorway. Each features light distressed details and are paired with antique brushed brass and crystal lids.

**19825 Kadam Vases, S/2**

S- 5"x 9"x 5", L- 6"x 12"x 6" Rust brown ceramic with bright orange accents. Not designed to hold liquids.

**18938 Cayson Bottles, S/2**

S- 6"x 8"x 6", L- 7"x 9"x 7" Vertically ribbed ceramic finished in a raw umber brown glaze with cream undertones and brushed nickel plated lift-off finials.



18938



**18925 Arpana Bottles, S/2**

S- 7"x 17"x 7", L- 7"x 20"x 7" Textured and patterned light blue and gray ceramic bottles with light tan glaze and brushed nickel lift-off matching finials.

**19547 Freya Containers, S/2**

S- 11"x 12"x 5", L- 8"x 16"x 5" These ceramic containers feature a distressed, cracked light sky blue finish with antiqued khaki undertones. Removable lids. Not designed to hold liquids.

**18633 Mathias Bottles, S/3**

S- 5"x 11"x 5", M- 6"x 13"x 6", L- 6"x 18"x 6" Hand fluted ceramic bottles in a gray-blue glaze topped with weathered bronze metal finials with matching crystal sphere accents.



19547



18633





17842



18989



18886

**17842 Almera Bottles, S/2**

S- 6"x 14"x 6", L- 8"x 16"x 8" Set of two ceramic bottles feature an organic textured finish in a distressed dark teal glaze, paired with polished nickel accents and thick crystal details.

**18989 Saniya Containers, S/2**

S- 5"x 8"x 5", L- 7"x 8"x 7" This set of two, sapphire blue ceramic containers feature a geometric pattern with ivory undertones and lift-off lids.

**18886 Varuna Bottles, S/2**

S- 6"x 10"x 6", L- 5"x 14"x 5" Crackled and textured, cobalt blue ceramic with rust undertones and a heavy glaze. Set on crystal bases with matching crystal and brushed nickel lift-off finial caps.





17526

**17526 Klara Bottles, S/2**

S- 8"x 13"x 8", L- 8"x 17"x 8" Modern style emanates from this set of decorative ceramic bottles with an embossed geometric pattern finished in a glossy cobalt blue and accented with polished nickel and crystal finials.

**17868 Klara White Bottles, S/2**

S- 8"x 13"x 8", L- 8"x 17"x 8" Modern style emanates from this set of decorative ceramic bottles with an embossed geometric pattern finished in a glossy white and accented with polished nickel and crystal finials.

**18929 Chandran Containers, S/2**

S- 9"x 12"x 9", L- 6"x 17"x 6" Matte white ceramic with raised cube design and lift-off brushed nickel lids.



17868



18929







17578



17876

**17578 Ciji Vases, S/2**

S- 6"x 14"x 6", L- 4"x 18"x 4" Set of two, white ceramic vases with heavy exterior texture and a bright blue interior glaze.

**17876 Ciji Aqua Vases, S/2**

S- 6"x 14"x 6", L- 4"x 19"x 4" Set of two, aqua ceramic vases with heavy exterior texture and an ivory interior glaze.

**17527 Milla Vases, S/2**

S- 8"x 9"x 8", L- 8"x 12"x 8" Set of mid-century modern tripod base vases are organically shaped, and feature a textured crackled ivory ceramic with pierced holes.



17527





20156

**20156 Sara Vases, S/2**

S- 5"x 18"x 5", L- 6"x 23"x 6" Tall, textured, ceramic vases feature a pale taupe glaze with darker brown undertones. The cylindrical shape will add style and sophistication in your space. Great used next to a fireplace or as floor vases for that extra WOW factor. Not designed to hold liquids. Due to the nature of fired glazes on ceramic, finishes will vary slightly.

**18868 Kenley Vases, S/2**

S- 5"x 23"x 4", L- 5"x 25"x 4" Cracked white ceramic with pale gray undertones.

**17570 Angelou Vases, S/2**

S- 5"x 14"x 5", L- 5"x 18"x 5" Set of two ceramic vases finished in a white glaze with taupe accents, beaded texture, and a ribbed interior.







17719



17857



18988

**17719 Bixby Vases, S/2**

S- 6"x 13"x 6", L- 7"x 15"x 7" Earthenware vases finished in a cobalt blue glaze with carved textural detail.

**17857 Custin Vase**

12"x 12"x 12" Earthenware vase features a unique, hand-worked look with a dark bronze matte glaze and abstract turquoise accents.

**18988 Zayan Vases, S/2**

S- 7"x 7"x 7", L- 9"x 8"x 9" Set of two, uniquely shaped ceramic stem vases feature a spinning top pattern in multiple tones of blue.





17856



17720



17715

**17856 Clear Sky Vase**

10"x 17"x 10" Fun and modern, this earthenware vase showcases a unique shape with a simple sky blue glaze and navy accents.

**17720 Keone Vase**

12"x 26"x 12" Earthenware vase showcases a coastal influence with a navy, green, and white drip glaze and light distressing.

**17715 Sconset Vases, S/3**

S- 5"x 18"x 4", M- 4"x 20"x 4", L- 5"x 24"x 5"  
Set of three earthenware vases with alternating off-white, light blue, and navy glazes.





17721



18741



17878

**17721 Ortun Vase**

12"x 26"x 12" Cerulean and white striped earthenware vase is perfect for displaying a floral bouquet or may stand alone as a decorative accent.

**18741 Invano Vases, S/2**

S- 7"x 12"x 4", L- 8"x 19"x 5" Textured, distressed ceramic leaf vases finished in a pale blue, ivory and bronze glaze. Due to the nature of fired glazes on ceramic, finishes will vary slightly.

**17878 Nomad Vases, S/2**

S- 6"x 13"x 5", L- 8"x 15"x 5" Set of two rectangular vases showcase a well-traveled look with a black and white color story and natural beige palm leaf strands that create a unique basketweave design.





**17722 Guevara Vases, S/2**

S- 11"x 10"x 4", L- 11"x 19"x 4" Set of two earthenware vases are finished in a striped gray ombre glaze.

**17716 Natchez Vases, S/3**

S- 7"x 12"x 7", M- 10"x 13"x 10", L- 7"x 18"x 7" Set of three earthenware vases are finished in light gray, charcoal, and natural beige with etched geometric patterns.







**18711 Aura Vases, S/2**

S- 4"x 12"x 4", L- 6"x 16"x 6" Smoke gray and ash black enhance the weave pattern of these elegant ceramic vases.

**17711 Riordan Vases, S/2**

S- 8"x 16"x 8", L- 10"x 20"x 10" Made from ceramic, these contemporary vases feature a marbled black and white exterior with a matte white interior.





17717

**17717 Lockwood Vases, S/2**

S- 7"x 11"x 7", L- 6"x 16"x 6" Set of two earthenware vases feature a modern shape and are finished in a glossy black glaze with white interiors.

**17866 Amhara Vases, S/2**

S- 6"x 14"x 6", L- 6"x 18"x 6" Set of two ceramic vases are finished in a contemporary black and white striped motif, inspired by tribal designs.



17866





**17737 Como Vases, S/2**

S- 6"x 6"x 6", L- 6"x 11"x 6" Paying homage to the 1960's, these etched glass vases showcase a white to dark gray ombre look with noticeable carved texture.

**17520 Tinley Bowls, S/2**

S- 7"x 7"x 7", L- 9"x 9"x 9" Handcrafted from blown glass, these bowls feature an ombre finish of grays, blacks, and bronze with an iridescent glaze to complete the unique look.







**20084 Carla Vases, S/2**

S- 8"x 10"x 8", L- 7"x 15"x 7" Shapely, glass vases featuring a beautiful teal green finish that tapers down to white.

**17843 Lulu Vases, S/2**

S- 9"x 10"x 8", L- 7"x 13"x 4" Set of two art glass vases display a deep aqua blue tone with copper flecked details.

**17741 Adrie Vases, S/2**

S- 10"x 11"x 3", L- 11"x 14"x 5" Set of two art glass vases showcase deep cobalt and black hues.





**17844 Capri Vases, S/2**

S- 5"x 9"x 3", L- 4"x 13"x 4" Set of two art glass vases feature organic edge rims with deep cobalt blue and copper textured finishes.

**17521 Korbin Vases, S/2**

S- 6"x 9"x 6", L- 5"x 18"x 5" Handcrafted from blown glass, these ocean blue vases feature an acid etched rust bronze texture and iridescent glaze.

**17762 Ione Vases, S/2**

S- 7"x 11"x 7", L- 8"x 13"x 8" Unique seeded glass vases feature a taupe to light blue ombre colorway.







17780



18844



17845

**17780 Ariga Vase**

10"x 19"x 10" Modern vase features an emerald green glass centered in an open iron box finished in brushed gold.

**18844 Mercede Vases, S/3**

S- 4"x 5"x 4", M- 4"x 6"x 4", L- 5"x 8"x 5" Glass bottles in varying shades of blue-green with a textured, rust ivory glaze. Color variations are to be expected, and are part of their unique charm.

**17845 Matcha Vases, S/2**

S- 7"x 7"x 7", L- 9"x 9"x 9" Crafted from 100% art glass, these vases showcase a seeded glass look with shades of sage and moss green.





20187



18965

**20187 Cierra Vases, S/2**

S- 16"x 22"x 4", L- 14"x 30"x 4" Cast of aluminum, these handcrafted, over-sized vases are striking statement pieces featuring a textured nickel finish.

**18965 Kyler Vases, S/2**

S- 13"x 18"x 2", L- 11"x 22"x 2" Oversized set of two, handcrafted, textured cast aluminum vases featuring a bronze finish.



**20188 Darla Vases, S/2**

S- 8"x 8"x 3", L- 7"x 12"x 3" Cast of aluminum, these handcrafted vases feature a ribbed, polished nickel finish.

**18959 Kaylie Vase**

6"x 21"x 6" Large-scale textured cast aluminum vase featuring a black nickel finish.

**18962 Anna Vases, S/4**

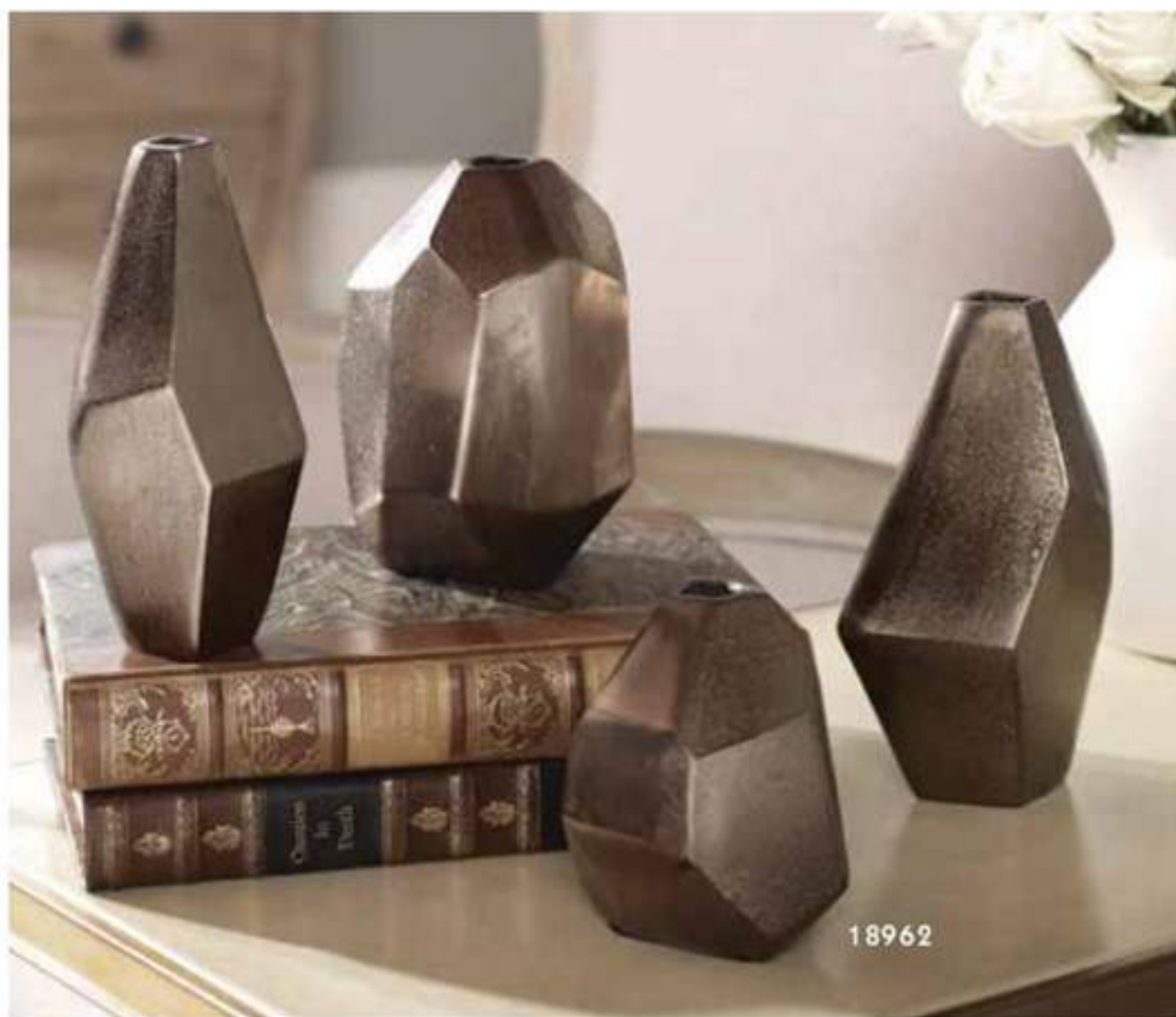
S- 4"x 4"x 4", M- 4"x 6"x 4", L- 3"x 7"x 3", XL- 3"x 7"x 3" Set of four, textured cast aluminum, geometric vases feature a bronze finish.



18959



20188



18962





18967



19826

**18967 Noa Vases, S/2**

S- 4"x 13"x 4", L- 6"x 18"x 6" Set of two, cast aluminum vases feature a subtle twist design and finished in an antiqued nickel.

**19826 Rajata Vases, S/3**

S- 4"x 12"x 4", M- 5"x 13"x 5", L- 6"x 16"x 6" These vases are made of shiny, golden champagne electroplated metal. Not designed to hold liquids.

**17598 Gretchen Vase**

23"x 22"x 4" Cast aluminum vase features a ribbed, gold finish.



17598





18861



**18861 Kasen Vases, S/2**  
 S- 8"x 16"x 6", L- 9"x 20"x 6"  
 Terracotta finished in a textured charcoal  
 with light gray glaze and copper leaf  
 accents.

**18859 Ragini Vases, S/2**  
 S- 6"x 16"x 6", L- 10"x 20"x 10"  
 Textured terracotta vases finished in an  
 aged caramel with blue-gray glaze.



18859





17751

**17751 Villa Vases, S/2**

S- 8"x 24"x 8", L- 12"x 36"x 12"

Natural terracotta vases are finished in a mottled white wash with natural texture and distressing, giving them an old world look.

**18857 Rutva Vases, S/2**

S- 8"x 20"x 5", L- 10"x 28"x 6"

Textured, aged ivory terracotta with aged black accents surrounding the body.



18857



**17752 Menja Bowl**

17"x 18"x 6" Evoking an old world style, this bowl is finished in a distressed aged stone ivory terracotta with antique blue undertones. The base is accented by a natural suar wood accent.

**17745 Dua Vases, S/2**

S- 9"x 12"x 8", L- 12"x 18"x 9" Set of two terracotta vases are finished in a natural stone look with noticeable texture and braided rattan accents.





**17877 Kona Bowl**

17"x 4"x 17" Made from 100% tamarind wood, this bowl has a distressed charcoal finished exterior with a bright aqua finished interior. Each piece is handcrafted making it unique. Cracks and variations in the grain are normal.

**17718 Aponi Bowls, S/2**

S- 8"x 7"x 8", L- 11"x 10"x 11" Set of two earthenware bowls finished in a natural concrete gray tone with woven rattan details.

**17107 Brixton Bowl**

14"x 7"x 14" Terracotta bowl finished in an aged black with gold highlights and accented by a water hyacinth covered base.

**17879 Rastia Bowl**

14"x 5"x 14" Inspired by global travels, this bowl features a neutral terrazzo look with a black coral and resin mixed rim.







17744

**17744 Chikasha Bowl - Large**

15"x 3"x 13" Made of natural teak wood with a charcoal wash, each piece is handcrafted making it unique. Black and white rim details add a bohemian element to the design. Cracks and variations in the grain are normal.

**17743 Chikasha Bowl**

10"x 10"x 6" Made of natural teak wood with a charcoal wash, each piece is handcrafted making it unique. Black and white rim details add a bohemian element to the design. Cracks and variations in the grain are normal.

**17753 Saman Bowls, S/2**

S- 10"x 10"x 6", L- 11"x 11"x 7" Set of two bowls are produced from natural suar wood with a unique wood tone and accented by a black and clear translucent edge. Because each one is handcrafted, wood tone and grain may vary.



17743



17753





17727

**17727 Tamarind Bowls, S/2**

9"x 9"x 3" , 10"x 10"x 3" Set of two tamarind wood bowls showcase natural wood grain and color patterns. Because each one is handcrafted, wood tone and grain may vary. Each bowl is food safe.



17094

**17094 Tamarine Bowl**

16"x 8"x 16" Natural raw wood finish allows the beauty of the grain to show through these bowls. Each will vary in size due to being uniquely handcrafted. Cracks and variations in grain are normal.

**17085 Teak Leaf Bowl**

27"x 5"x 10" Made of natural teak wood. Each piece is handcrafted making it unique. Sizes will vary. Cracks and variations in the grain are normal.



17085





17579



17875

**17579 Ciji Bowl**

14"x 3"x 14" White ceramic bowl with heavy exterior texture and a bright blue interior glaze.

**17875 Delft Bowl**

17"x 4"x 17" A contemporary take on classic blue and white ceramics, this bowl features a unique ribbed design with a hand applied cobalt blue glaze.

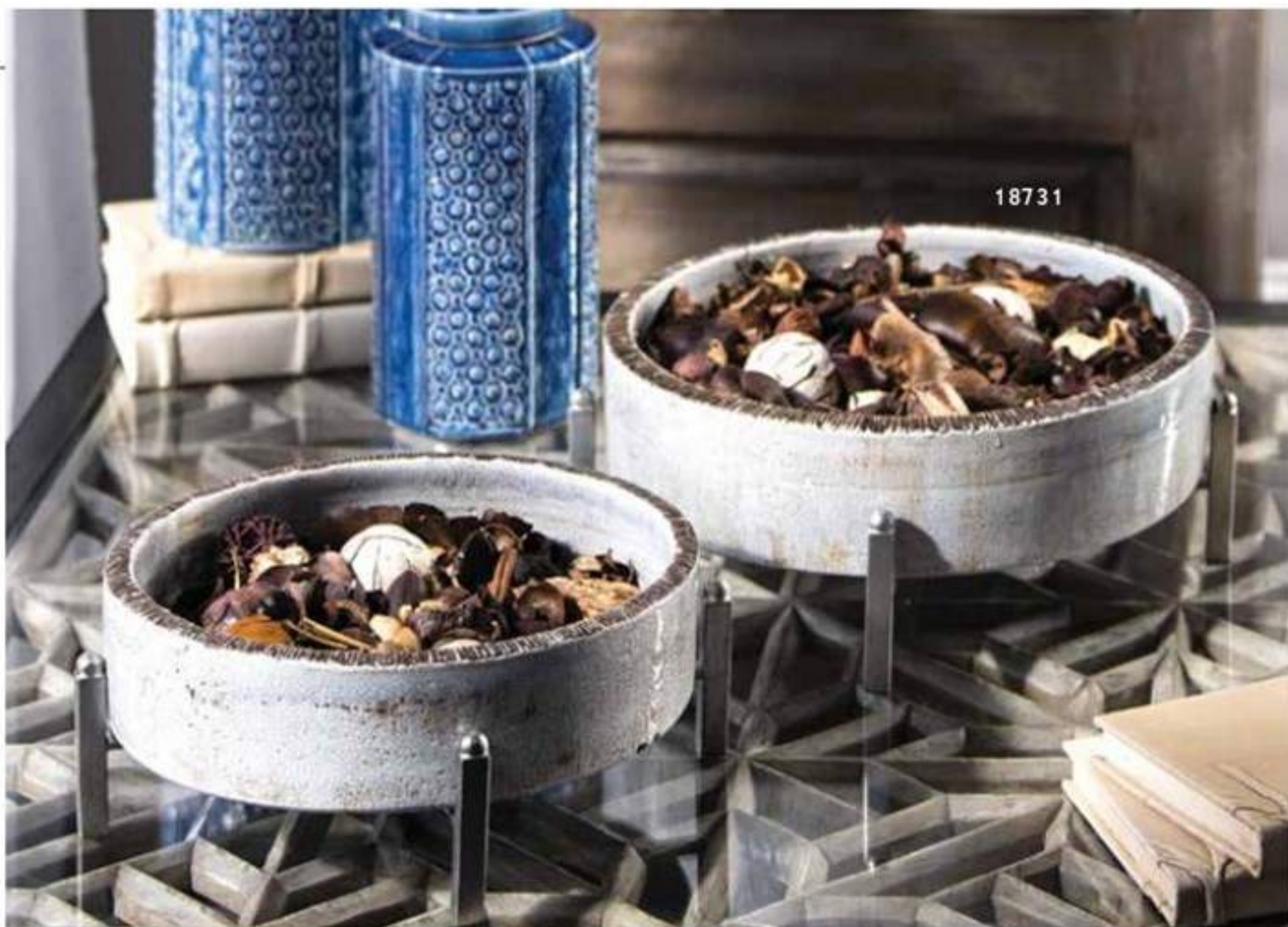
**17577 Zosia Bowls, S/2**

S- 9"x 7"x 9", L- 9"x 9"x 9" Set of two modern, black nickel plated bowls with large, textured rims perfect for display or storage.



17577





**18731 Essie Bowls, S/2**

S- 14"x 6"x 14", L- 16"x 6"x 16" Distressed, crackled pale gray ceramic bowls with rust undertones and lightly antiqued silver metal stands. Due to the nature of fired glazes on ceramic, finishes will vary slightly.

**17765 Ambretta Bowls, S/2**

S- 9"x 3"x 9", L- 12"x 3"x 12" Set of two square ceramic bowls are finished in an off-white and light gray drip glaze with organic, carved texture. The interiors are finished in a deep emerald green glaze. Each bowl is highlighted by crystal foot accents.







**17763 Azariah Bowls, S/2**

S- 8"x 4"x 8", L- 11"x 5"x 11" A nod to old world style, these ceramic bowls feature a distressed cream and beige crackle glaze with slight cracking and ribbed details.

**17855 Iroquois Bowl**

16"x 4"x 8" Earthenware bowl is finished in a calming mint green glaze with aqua blue details and accented by a ombre style chocolate brown glaze on the rim.

**17536 Tenzin Bowl**

16"x 6"x 6" Ceramic bowl finished in an aqua blue crackled glaze with chocolate brown accents.



17536





18615

**18615 Oak Leaf Bowl**  
20"x 7"x 18" Cast leaf bowl finished in a heavily antiqued metallic gold finish.

**19800 Clam Shell Bowl**  
23"x 7"x 13" Antique white.

**19972 River Boat Bowl**  
30"x 5"x 7" Made from heavily distressed, aged black metal with silver undertones and a silver stand.



19800



19972





**18955 Alya Bowl**

17"x 8"x 17" Copper bronze luster glass bowl completed with an aged bronze, scrolled ironwork base.

**18850 Asmita Bowl**

11"x 13"x 11" Copper brown luster glass bowl with heavily antiqued, gold metal stand accented by small round mirrors.

**18957 Anas Bowls, S/3**

S- 13"x 3"x 4", M- 16"x 4"x 6", L- 20"x 4"x 8" Set of three, textured cast aluminum bowls feature an antique brass finish.







**18950 Dough Tray**

30"x 3"x 9" Authentic reproduction of an India dough tray used for mixing and kneading the dough. Handcrafted from solid reclaimed wood, so each will vary slightly in size and finish. Our trays include an iron band, that was often added to help control the splitting of the solid wood dough trays. Solid wood will continue to move with temperature and humidity changes, which can result in small cracks and uneven surfaces, adding to its authenticity and character.

**17594 Roderick Trays, S/3**

S- 9"x 2"x 8", L- 11"x 2"x 11", L- 14"x 3"x 14" Set of three, cast aluminum trays feature a dark black nickel finish.

**17593 Caryn Trays, S/2**

S- 13"x 3"x 6", L- 21"x 3"x 6" These cast aluminum trays feature unique, organic shapes finished in dark black nickel.







19862



18997

**19862 Smoked Leaf Tray**

43"x 5"x 17" Beautifully curved glass tray in a smoked, dark gray finish.

**18997 Mika Tray**

24"x 3"x 9" Clear art glass tray features a slight curve to the glass and is displayed on a brushed nickel, open arch base.

**19787 Aniani Tray**

14"x 18"x 2" Decorative and functional tray constructed of multiple mirrors with polished edges for a smooth finish.



19787





18770

**18770 Rafaela Tray**

24"x 4"x 14" Forged iron with a metallic silver leaf finish accented by a reinforced glass interior.

**18911 Ari Tray**

31"x 4"x 11" Metallic silver with light antiquing. Can also be hung on the wall.

**20074 Camilla Tray**

36"x 3"x 9" Dramatic proportions and thick cast aluminum make this tray special. The edge is rough cut, and polished to have a soft hand. Finish is a textured warm nickel.



18911



20074





17758



**17758 Eira Tray**

18"x 3"x 18" Showcasing a more contemporary look, this round tray features a polished nickel plated frame with a white glass base.

**17565 Eugenie Tray**

21"x 3"x 15" Decorative and functional tray constructed with a polished nickel plated frame and an antique mirror base.

**20177 Rachele Tray**

24"x 5"x 24" Decorative and functional, perfect for organizing those special items on your vanity or use it as a decorative accent on any table. Softly, curved steel finished in an elegant silver leaf accented by a mirrored tray that will give fullness and depth to whatever you may display on it.



17565



20177





19997

**19997 Bechet Tray**

22" x 2" x 22" Tray with a lightly antiqued silver finish and antiqued mirror interior.

**17732 Talmage Tray**

20" x 2" x 16" Contemporary tray showcases an organic ribbed texture finished in silver leaf with a mirrored base.



17732





18903

**18903 Carly Tray**

18"x 2" x 11" Beveled mirrors make their way around this tray, accented by bright gold leaf.



17837

**17837 Cable Chain Tray**

18"x 3"x 13" Frame made from 100% cast iron, this tray is finished in silver leaf with noticeable distressed details and a mirrored bottom.

**20057 Ettore Tray**

24"x 4"x 14" Sophisticated, black beveled glass tray with lightly antiqued gold leaf handles.



20057





**19912 Nicoline Tray**

27"x 4"x 18" Forged iron with brass patina accented by a reinforced mirror interior.

**18706 Balkan Tray**

24"x 15"x 5" Hand forged iron frame finished in lightly antiqued gold leaf accented with suspended, clear acrylic, solid square bars and a beveled mirror interior.







18749

**18749 Reine Tray**

24"x 4"x 24" Classic round tray featuring acacia wood with iron handles.

**19727 Acela Tray**

20"x 4"x 20" Natural fir wood base with aged metal details.

**19725 Abila Tray**

27"x 4"x 18" Tray finished in a heavily distressed antique cream finish with natural fir wood undertones and antiqued bronze accents. Cutout handles for ease of carrying. Inside base measurement is 21x12.



19727



19725





20131

**20131 Faustina Boxes and Tray, S/4**  
 Tray- 20"x 2"x 6", S Box (2)- 6"x 9"x 5",  
 L Box- 5"x 11"x 5" Beveled mirrors make their  
 way around these beautiful boxes, accented by  
 bright, gold leaf metallic tray and handles. Lids  
 are removable.

**18900 Hive Box**  
 12"x 6"x 7" Aged black honeycomb design  
 with pewter highlights and metallic gold handle  
 on lift-off lid.



18900





**18838 Ukti Boxes, S/2**

S- 9"x 5"x 3", L- 12"x 4"x 6" Black alligator patterned boxes with bright gold leaf trim and removable lids.

**18723 Karis Boxes, S/2**

S- 8"x 3"x 5", L- 12"x 5"x 6" Emerald green boxes with bright gold leaf trim and removable lids.

**17836 Lalique Box**

13"x 5"x 9" Inspired by the Art Deco era, this decorative box showcases a faux smoke gray shagreen wrapped exterior accented by a brushed antique brass and black enamel closure. The interior is finished in matte black.



18723



17836







**19618 Neelab Boxes, S/2**

S- 7"x 5"x 3", L- 10"x 6"x 4" These ceramic boxes feature a distressed pale blue finish with reddish brown accents and caramel highlights. Removable lids.

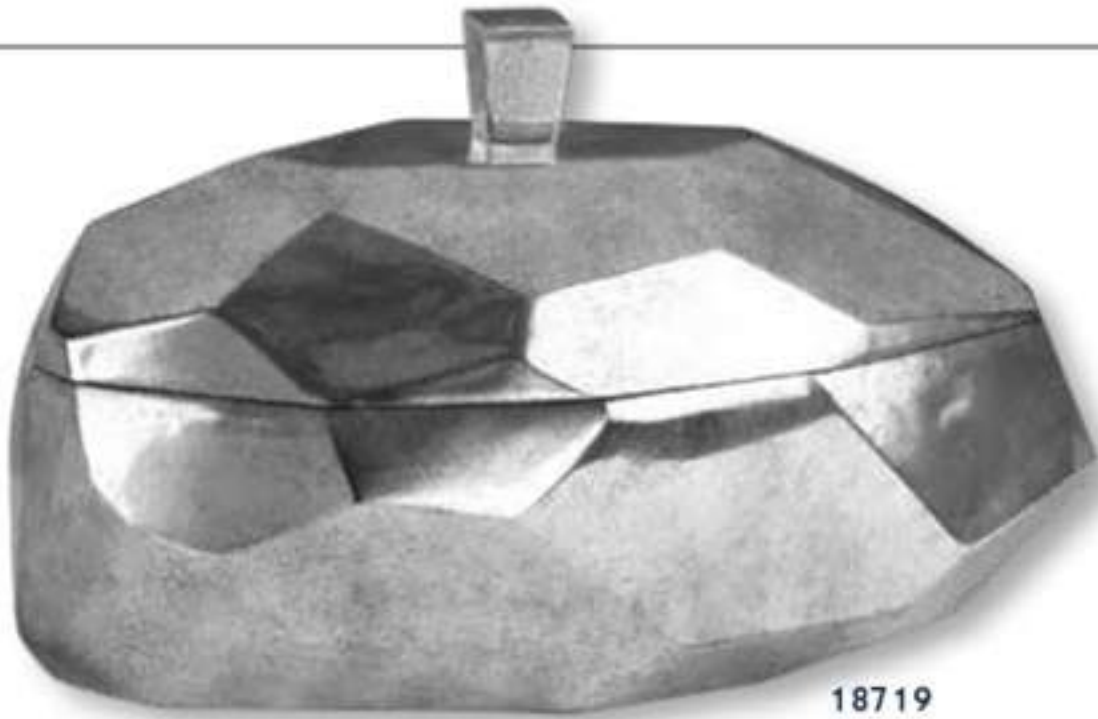
**18776 Ruth Boxes, S/2**

S- 9"x 6"x 8", L- 12"x 9"x 9" Blue-green textured ceramic boxes with light gray glaze and antiqued gray lift-off lids. Due to the nature of fired glazes on ceramic, finishes will vary slightly, and are part of their unique charm.

**17724 Nephele Box**

12"x 6"x 4" Decorative box has an aged white stone look with an etched gold leaf feather accent and lift-off lid.





18719



**18719 Minta Box**

15"x 9"x 9" Tarnished silver box with removable lid.

**18654 Typesetting Box**

11"x 6"x 12" Large square box with lift-off lid, cast from vintage typesetting blocks, featuring a rich antique bronze finish.

**19669 Lican Box**

18"x 9"x 7" Natural wood box with a light chestnut stain and antiqued silver accents with a lift-off lid.



18654



19669





17079

**17079 Lying Lotus Candleholder**

35"x 4"x 16" Candleholder is made of hand forged metal finished in champagne silver and pewter. This may be hung on wall or used on tabletop. Two 3.5"x 2" white candles included.

**20605 Fedora Candleholder**

32"x 30"x 6" This candleholder is finished in a dark brown wash accented with clear beads. Five 3"x 4" distressed beige candles included.



20605



UTTERMOST





18994

**18994 Aliso Candleholders, S/2**

S- 6"x 19"x 6", L- 5"x 23"x 5" This set of two candleholders features a sleek tapered design in solid cast iron with a subtle porous texture, sealed to preserve the natural finish and accented with gold infused highlights. Includes two 3"x 3" distressed off-white candles.

**18766 Eugenio Candleholders, S/2**

S- 9"x 20"x 4", L- 9"x 26"x 4" Textured aged black ceramic with silver undertones and brushed steel loops surrounding two 3"x 3" distressed beige candles that are included.



18766





**18986 Luka Hurricane Candleholder**

8"x 16"x 8" This hurricane candleholder features an antiqued concrete base with clear glass globe and 5"x 4" distressed off-white candle. Suitable for both indoor and outdoor use.

**18818 Karun Candleholders, S/2**

S- 5"x 12"x 5", L- 5"x 17"x 5" Charcoal stained concrete with crystal bases and brushed nickel candle cups. Two 4"x 3" distressed white candles included.







17873

**17873 Strathmore Candleholders, S/2**

S- 5"x 8"x 5", L- 5"x 13"x 5" Reminiscent of chiseled stone, these candleholders feature a stone gray finish that exudes a masculine luxe style. Each is accented by a brushed nickel candle cup and includes two 4"x 3" distressed white candles.

**17518 Karter Candleholders, S/3**

S- 4"x 14"x 4", M- 4"x 18"x 4", L- 4"x 22"x 4" This set of three candleholders features a sleek angular design in raw iron and clear glass cylinders with three 3"x 3" distressed beige candles.



17518





**17882 Deane Candleholders, S/2**

S- 5"x 20"x 5", L- 5"x 22"x 5" Set of two candleholders feature a fluted iron base finished in a dark gunmetal with smoke gray and white marble accents and clear glass hurricanes. Two 3"x 3" white candles are included.

**17510 Dash Candleholders, S/2**

S- 10"x 10"x 10", L- 12"x 12"x 12" Set of two steel polygon candleholders with an antique brushed nickel finish and two 4"x 3" distressed white candles.

**17734 Daelan Candleholders, S/2**

S- 5"x 16"x 5", L- 5"x 19"x 5" Contemporary candleholders feature geometric detailing in a gunmetal finish with a crystal foot. Two 4"x 3" distressed white candles are included.







17567

**17567 Elizer Candleholder**

17"x 21"x 5" This candleholder features an aged black metal base with rust undertones accented with antique brass and crystal details. Two 3"x 3" distressed off-white candles are included.

**17552 Charvi Candleholders, S/2**

S- 7"x 16"x 7", L- 7"x 20"x 7" This set of two candleholders feature an aged brass stand surrounded by a clear glass hurricane and finished with a thick bronze foot. Two 4"x 3" distressed off-white candles included.



17552





**18979 Amal Candleholder**

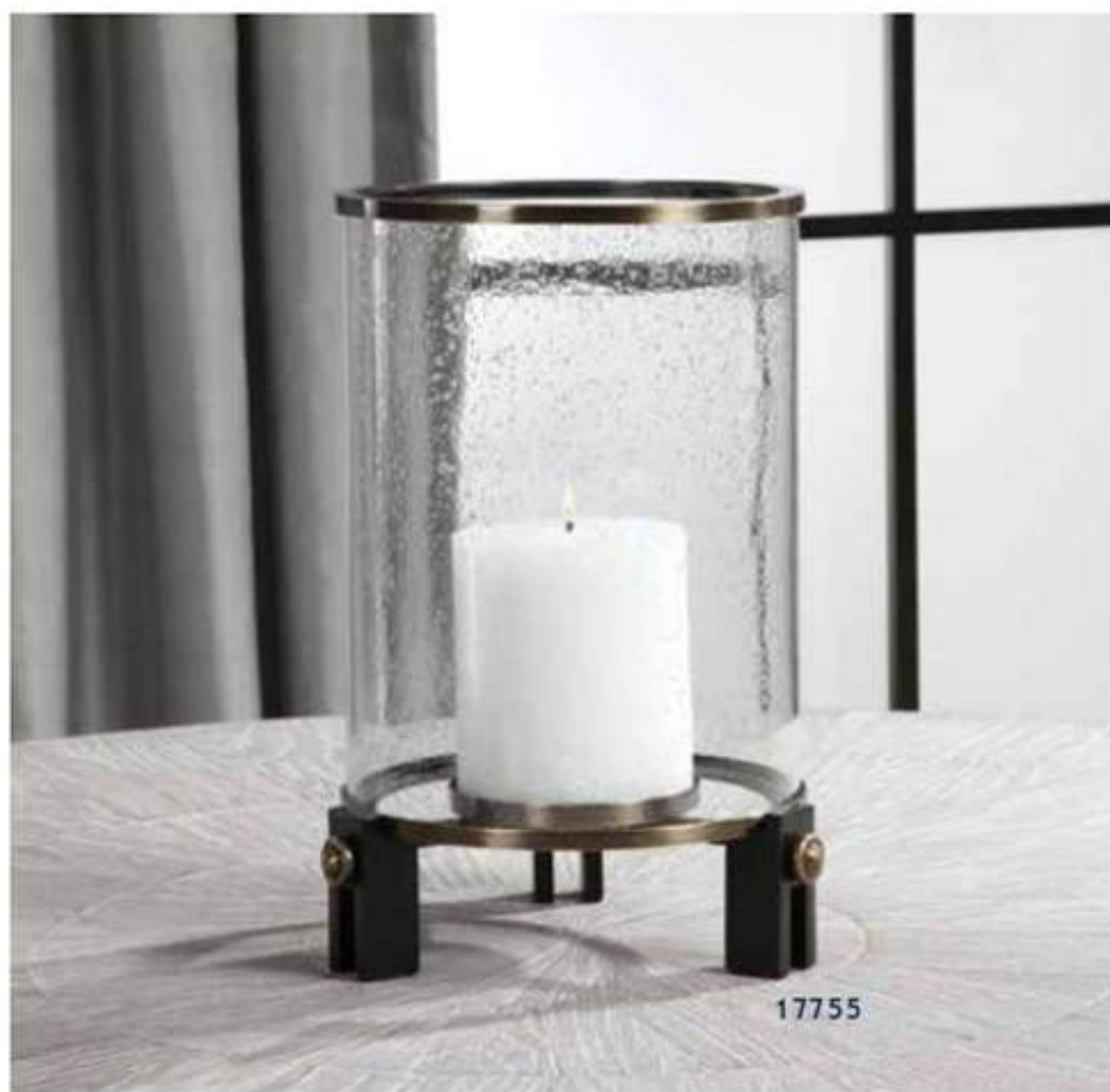
12"x 19"x 12" Iron candleholder finished in an oil rubbed bronze with plated, brushed coffee bronze accents and glass candle cups. Includes three 3"x 3" distressed off-white candles.

**17834 Montag Candleholders, S/2**

S- 5"x 16"x 5", L- 5"x 19"x 5" Set of two candleholders feature a classic antique brushed brass finish with elegant crystal accents and a matte black metal foot. Two 3"x 3" white candles are included.

**17755 Faraday Candleholder**

11"x 14"x 11" Industrial style candleholder has an antique brushed brass and aged black iron base with a seeded glass hurricane. One 4.5"x 5" white candle is included.







**18835 Durga Candleholders, S/2**

S- 7"x 27"x 7", L- 7"x 31"x 7" Matte black open design iron work with coffee bronze details, clear water glass globes and two 4"x 5" distressed beige candles.

**17912 Riad Candleholder**

6"x 16"x 6" Taking cues from Moroccan style, this candleholder is finished in dark bronze with gold rub-through details and a textured glass hurricane. One white 3"x 3" candle is included.

**20044 Nicia Candleholder**

11"x 14"x 11" Candleholder features a tarnished, copper bronze finish with a clear, hammered glass globe. Comes with a 4" white candle.







**17568 Yarina Candleholder**

11"x 15"x 5" Whimsical in design, this candleholder features a curved steel plate finished in dark bronze with bright gold leaf edges and a large crystal foot. One 3"x 3" distressed white candle included.

**18709 Pina Candleholders, S/3**

S- 7"x 7"x 5", M- 10"x 10"x 5", L- 13"x 13"x 5" Aged black curved metal with silver highlights and three distressed white candles, one 3"x 3", one 3"x 4" and one 3"x 5".

**17105 Rayne Candleholder**

12"x 21"x 5" This candleholder features an oval-shaped, open iron finished in an antique bronze with wire wrapped handle and the appearance of a floating candle in the center. Clear glass globe and one 4"x 4" cream candle included.







18643

**18643 Claire Candleholders, S/2**

S- 4"x 2"x 4", L- 6"x 3"x 6" Heavy crystal block candle holders, suspended by machined brass finished legs. Includes one 3"x 3" and one 4"x 3" distressed off-white candle.

**18645 Leslie Candleholders, S/2**

S- 6"x 15"x 6", L- 6"x 19"x 6" Plated, brushed brass cylinders with chunky clear glass accents and two 3"x 3" off-white candles.



18645





18920

**18920 Carma Candleholders, S/2**  
S- 8"x 22"x 8", L- 8"x 24"x 8" Plated coffee bronze with textured, clear glass accents and two 4"x 3" distressed off-white candles.

**17546 Castiel Candleholders, S/2**  
S- 5"x 10"x 5", L- 5"x 13"x 5" Set of two candleholders feature an antique brushed brass finish and an elegant white marble foot. Two 4"x 3" off-white distressed candles included.

**17881 Sandringham Candleholders, S/2**  
S- 5"x 11"x 5", L- 5"x 14"x 5" Sophisticated and traditional, these candleholders feature an iron base finished in antique brushed brass, accented by crystal details and a clear glass hurricane.



17546



17881





18952

**18952 Myah Candleholder**

15"x 15"x 15" Candleholder featuring an open iron, geometric pattern finished in an antiqued gold. Candle cup with copper bronze luster glass globe appears to be floating in the center with one 4"x 4" white candle.

**18848 Badal Candleholders, S/2**

S- 9"x 29"x 9", L- 9"x 33"x 9" Heavily antiqued gold finish on hand hammered iron with egg shaped, copper brown luster glass globes and two 3"x 3" white candles.



18848





18973

**18973 Lianna Candleholders, S/2**

S- 10"x 15"x 10", L- 10"x 17"x 10" Creatively stacked, open steel pentagons finished in a heavily antiqued bronze, support a crystal sphere and candle cup. Included are two 4"x 3" distressed off-white candles.

**19957 Lucy Candleholders, S/2**

6"x 13"x 6" Bright, metallic gold metal with clear glass globes and two 3"x 3" distressed off-white candles.

**18953 Ruhi Hurricane Candleholders, S/2**

S- 5"x 7"x 5", L- 5"x 11"x 5" This set of two hurricane candleholders features a heavily antiqued gold finish over an open iron pattern surrounding copper bronze luster glass globe inserts. Included are two white candles one 3"x 3" and one 3"x 4".



19957



18953







**18958 Amina Candleholders, S/3**  
 S- 5"x 7"x 5", M- 5"x 10"x 5", L- 5"x 13"x 5"  
 Set of three, textured cast aluminum candleholders feature an antiqued brass finish and completed with three 4"x 3" white candles.

**17517 Tala Candleholders, S/2**  
 6"x 20"x 6" Set of two forged iron candleholders composed of multiple staggered, stacked rings and finished in a plated gold with clear glass globe and acrylic base. Includes two 3"x 3" distressed off-white candles.







18602

**18602 Autograph Tree Candleholder**

8"x 20"x 8" Clear glass globe above a cluster of life-cast Hawaiian Autograph Tree pods rendered in an antique bronze finish, set on a concrete cylinder base with one 4"x 3" distressed off-white candle.

**19562 Sorel Candleholder**

8"x 23"x 8" Hand forged metal finished in antiqued bronze with a transparent, copper brown glass globe. One 3"x 3" white candle included.

**19731 Ribbon Candleholder**

24"x 10"x 9" Swirled, antiqued, bronze metal candleholder with transparent copper brown glass. Six beige 2"x 2" candles included.



19562



19731





17742



17560

**17742 Sutton Candleholders, S/2**

S- 6"x 7"x 5", L- 6"x 9"x 5" Set of two crystal and polished nickel candleholders. Two 3"x 3" distressed white square candles are included.

**17560 Kyrie Candleholders, S/2**

S- 5"x 14"x 5", L- 5"x 19"x 5" Set of two candleholders finished in polished nickel with large, square crystal accents. Includes two 4"x 3" distressed white candles.





17731

**17731 Kiernan Candleholder**

27"x 13"x 9" Modern candleholder features an intertwined ring design and is finished in polished nickel. Three 4"x 3" white candles are included.

**17564 Esme Candleholders, S/2**

S- 5"x 21"x 5", L- 5"x 25"x 5" Set of two candleholders feature a thick, black marble foot that supports intertwined, stacking rings finished in a polished nickel plating and clear glass globe. Includes two 3"x 3" white candles.

**17561 Lucian Candleholders, S/2**

S- 5"x 12"x 5", L- 5"x 15"x 5" Set of two candleholders featuring an open steel frame finished in polished nickel with crystal accents. Two 4"x 3" distressed white candles included.



17564



17561







**17529 Gallah Candleholder**  
8"x 20"x 8" Aged metallic silver base with  
textured blue and white blown glass globe and  
one distressed 3"x 4" white candle.





**17583 Almanzora Candleholders, S/2**

S- 5"x 14"x 5", L- 5"x 18"x 5" Set of two candleholders feature teal glass base with bronze sugar spun accents and brushed nickel and crystal details. Includes two 4"x 3" distressed white candles.

**17746 Illini Candleholders, S/2**

S- 5"x 13"x 5", L- 6"x 16"x 6" Set of two candleholders feature natural coral stone bases with teak wood and aged black accents. Two 3"x 3" white candles included.

**17779 Cassiopeia Candleholders, S/3**

S- 4"x 10"x 4", M- 4"x 12"x 4", L- 5"x 15"x 5" Set of three candleholders showcase traditional silhouettes and are made from a deep, midnight blue glass with three 3"x 3" white candles.







17530



17515



17556

**17530 Genaro Candleholder**

7"x 19"x 7" This cast iron candleholder has an aged, silver branch framework with heavy distressing. Includes one 3"x 3" distressed off-white candle.

**17515 Seahorse Candleholder**

4"x 19"x 4" Heavily antiqued, silver champagne seahorse sculpture holds one 3"x 3" distressed off-white candle and sits on top a concrete inspired cube base.

**17556 Leading The Way Candleholder**

8"x 16"x 7" Cast iron finished in an aged silver with gold accents. Includes one 4"x 4" distressed off-white candle.





18759

**18759 Benigna Candleholder**

29" x 19" x 5" Eight tea light candles beautifully displayed in clear glass candle cups along natural fir wood with golden bronze iron accents. Eight tea light candles included.

**18577 Ameera Candleholder**

24" x 18" x 6" Lightly antiqued silver champagne iron ring features a natural twig stretched across the front and attached with rope, the base is natural fir wood. Includes three 3" x 3" distressed off-white candles. Due to the authentic nature of the twig, size and shape will vary slightly.



18577





**18926 Callum Candleholder**

33"x 12"x 7" Cracked, aged black wood with recessed candle cups set atop antique silver, arched iron legs, and five 4"x 3" distressed white candles.

**19828 Kra Candelabra**

24"x 14"x 4" Made of aged iron with gray glaze and weathered fir wood base. Three distressed beige 3"x 3" candles included.







17099



20110

**17099 Ellie Candleholder**

16" x 16" x 6" Antique bronze candleholder features an iron frame with wire wrapped handle. Includes three 3" x 2" antiqued candles.

**20110 Speranza Sculpture**

20" x 20" x 6" Hand forged metal features an artisan copper finish with a beautifully textured patina. Each piece is uniquely handcrafted, slight variations are normal.





18837

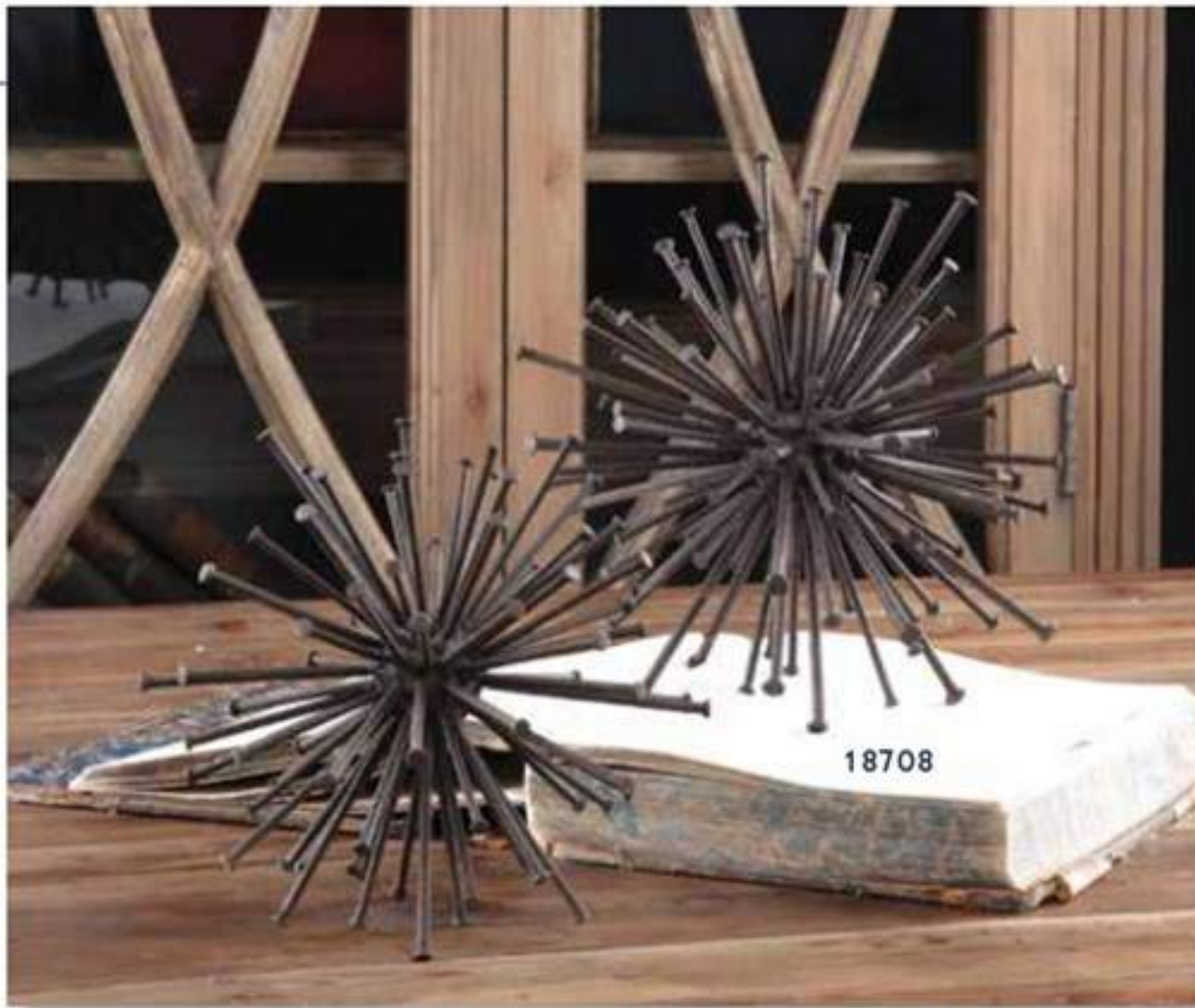
**18837 Flowering Dandelions Sculpture, S/2**  
S- 6"x 16"x 5", L- 6"x 21"x 5" An interpretation, in metal, of flowering dandelions encased in steel frames, finished in an aged black with golden highlights.

**18613 Rilynn Sculpture**  
11"x 18"x 4" Cast metal ring sculpture with an antique bronze finish and gold highlights, set on a white marble cylinder base.



18613





**18708 Aric Sculpture, S/2**

S- 7"x 7"x 7", L- 9"x 9"x 9" Collection of nails creating spheres finished in a rust brown with golden bronze highlights.

**19975 Stetson Spheres, S/3**

S- 7"x 7"x 7", M- 9"x 9"x 9", L- 12"x 12"x 12" Dark, aged bronze metal spheres with silver undertones.







**17913 Orbits Ring Sculptures, S/2**  
S- 12"x 11"x 2", L- 14"x 14"x 2" Aluminum accessories showcase a contemporary look with streamlined curves finished in black nickel.

**18961 Jimena Ring Sculptures, S/2**  
S- 12"x 11"x 2", L- 14"x 14"x 2" Set of two, textured cast aluminum ring sculptures feature a clean gold finish.

**17103 Adilynn Sculpture**  
26"x 16"x 4" Thick hammered iron rings finished in gunmetal, antique silver and gold.







**18964 Harlan Objects, S/2**

7"x 6"x 7" Set of two, cast aluminum decorative objects feature a brass finish.

**17690 Harlan Objects Black Nickel, S/2**

7"x 6"x 7" Set of two, cast aluminum decorative objects feature a black nickel finish.

**17580 Alize, S/3**

S- 5"x 7"x 5", M- 4"x 10"x 4", L- 4"x 14"x 4" Elegant white diamonds made of granulated marble that accurately replicates the look of Thassos marble atop crystal bases.

**17916 Alize Black, S/3**

S- 5"x 7"x 5", M- 4"x 10"x 4", L- 4"x 14"x 4" Elegant black diamonds made of granulated marble that accurately replicates the look of Thassos marble atop crystal bases.







17596



17500



**17596 Minta Box**

12"x 18"x 5" Gray and emerald green marble disk displayed on a gold leaf plated stand with an acrylic foot. Each marble specimen is unique and will vary in color.

**17500 Layan Charger**

18"x 21"x 5" Clear, rippled art glass charger featuring a subtle crosshatch texture on the reverse with bright gold accents displayed on a bronze, steel stand with black marble base.





18895

**18895 Leyla Sculpture**  
24"x 30"x 5" Antique bronze sculpture set atop a textured black concrete base.

**18771 Oja Sculpture**  
21"x 27"x 6" Metallic gold leaf twisted coil displayed atop a textured, charcoal finished base.



18771



**17559 Elio Sculpture**

14"x 21"x 6" Twisted iron spirals are finished in an oxidized copper patina with an oil rubbed bronze foot and a crystal accent.

**18576 Saanvi Sculpture**

18"x 24"x 6" Antique gold stacked and curved iron rods form this sculpture which appears convex when viewing from one side and concave from the other. The sculpture is displayed on a textured aged black base with gray undertones.



17559



18576





17513

**17513 Fall Leaves Sculpture**

16"x 27"x 5" Inspired by falling, fall leaves this sculpture features cast aluminum leaves finished in an antiqued silver champagne finish displayed on a crystal cylinder base.

**17872 Beekeeper Sculpture**

9"x 18"x 4" Inspired by a natural honeycomb, this sculpture showcases intricately carved details finished in antique gold and accented by a crystal foot.

**20079 Feathers Sculpture, S/3**

S- 6"x 10"x 3", M- 3"x 14"x 3", L- 4"x 16"x 3"  
With great emphasis on detail, these tabletop accessories feature a metallic gold finish with clear acrylic bases.

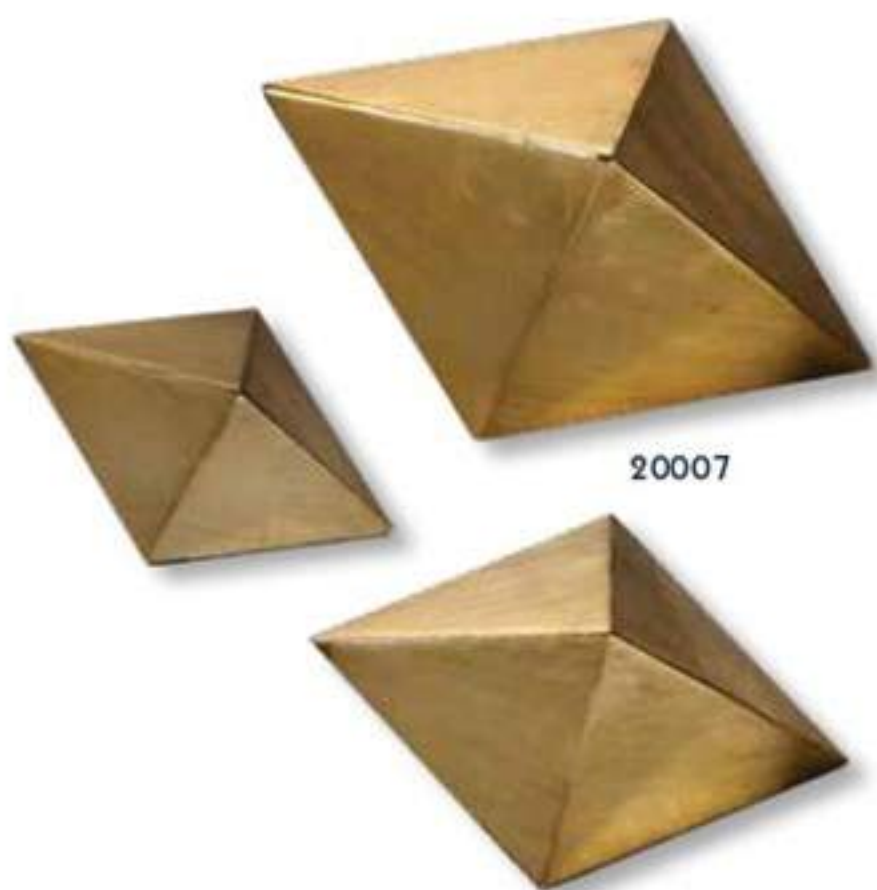


17872



20079





**19971 Pentagon Cubes, S/2**

S- 8"x 7"x 8", L- 10"x 9"x 10" Brushed, coffee bronze metal pentagons displayed on crystal feet.

**18927 Ayan Sculpture, S/2**

S- 8"x 9"x 5", L- 10"x 11"x 6" Interlocking iron finished in a heavily antiqued gold.

**20007 Rhombus Sculptures, S/3**

S- 5"x 3"x 3", M- 7"x 4"x 4", L- 8"x 5"x 4"  
Decorative, tabletop accessories feature a heavily antiqued champagne finish.





20066

**20066 Stetson Gold Spheres, S/3**

S- 7"x 7"x 7", M- 9"x 9"x 9", L- 12"x 12"x 12" Made of iron featuring a lightly antiqued, gold leaf finish.

**20061 Constanza, S/2**

S- 10"x 10"x 9", L- 12"x 11"x 10" Metallic gold leaf finish.

**17730 Rooney, S/2**

S- 7"x 7"x 4", L- 8"x 9"x 4" Set of two iron cubes finished in antique brushed brass sit atop square crystal bases.



20061



17730



UTTERMOST





**17739 Out of Office, S/3**

8"x 9"x 4" Trendy yet sophisticated, these brushed brass and white marble accessories are the perfect accent for any office.

**18574 Ellianna, S/2**

S- 6"x 10"x 6", L- 7"x 16"x 7" Crystal spheres elevated on stainless steel bases finished in a brushed, plated copper bronze.

**17566 Alega, S/2**

S- 5"x 6"x 5", L- 6"x 7"x 6" Crystal spheres elevated on steel bases finished in a polished, plated gold.



18574



17566





17557

**17557 Ellianna Silver, S/2**

S- 6"x 10"x 6", L- 7"x 16"x 7" Crystal spheres elevated on stainless steel bases finished in a brushed, plated silver.

**17880 Shooting Star, S/2**

S- 4"x 8"x 4", L- 4"x 11"x 4" This contemporary set of two showcase vibrant aqua selenite florets atop solid iron columns finished in brushed nickel.

**20158 Indian Lotus Sculptures, S/2**

S- 6"x 5"x 6", L- 6"x 7"x 6" Simple elegance is achieved by these antiqued, metallic silver lotus blooms that appear to be floating on clear crystal cubes.

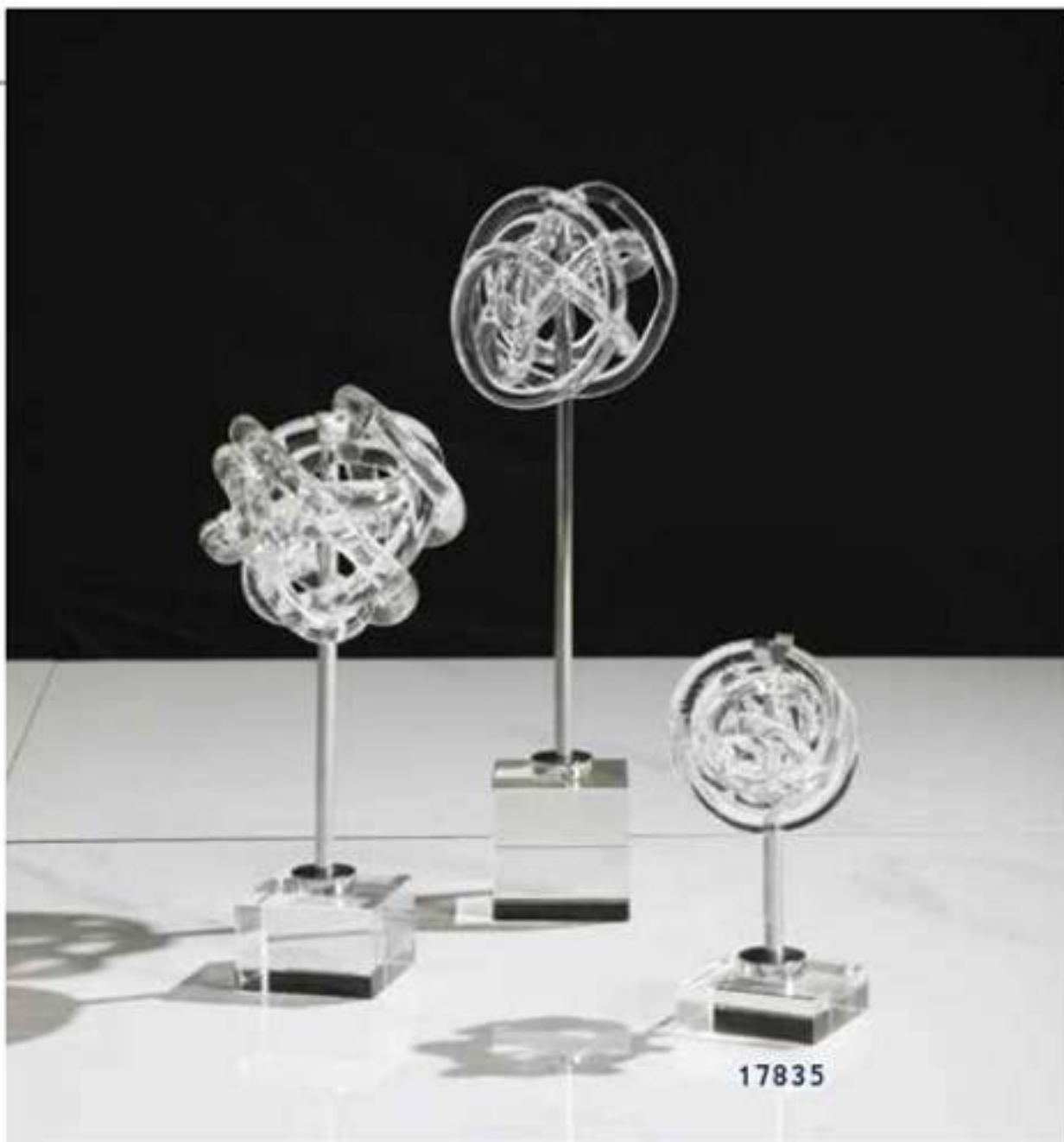


17880



20158





**17835 Neuron, S/3**

S- 4"x 8"x 4", M- 6"x 13"x 6", L- 5"x 17"x 5"

This contemporary trio features unique clear glass knot designs accented by polished nickel details and crystal bases.

**17710 Cyrene**

8"x 15"x 5" Elegant natural stones are set atop crystal bases with polished nickel plated accents.

**17871 Coin Toss, S/3**

S- 3"x 15"x 6", M- 3"x 19"x 6", L- 3"x 22"x 6"

Contemporary trio features solid white marble rings supported by polished chrome rods and an elegant crystal base.





17759

**17759 Pyrite Sculpture**

4"x 12"x 4" Unique sculpture showcases a cast pyrite stone, otherwise known as "fool's gold." The sculpture is finished in platinum silver with an elegant crystal base.

**18922 Talal Sculpture**

9"x 25"x 4" Randomly stacked, crimped edge, cast iron rectangles finished in a lightly antiqued brushed nickel, displayed on a black marble base.



18922





20088



17550

**20088 Gears Sculpture, S/3**  
S- 5"x 2"x 5", M- 7"x 4"x 7", L- 9"x 4"x 9"  
Industrial design finished in tarnished silver.

**17550 Garson Figurines, S/3**  
S- 7"x 14"x 4", M- 7"x 15"x 4", L- 7"x 17"x 4"  
Industrial gear figurines finished in an aged steel with a charcoal metal foot.





17733

**17733 Dakuba Sculpture**

8"x 32"x 5" Abstract carved sculpture is finished in silver leaf with distressed details and an elegant crystal foot.

**20134 Three Peas in a Pod Sculpture**

20"x 4"x 8" This gorgeous sculpture simulates peas sitting on an open pod, finished in a tarnished, metallic silver with clear crystal spheres.

**17867 Contemporary Lotus Sculpture**

26"x 18"x 5" Inspired by lotus flowers, this sculpture is finished in a contemporary silver leaf with noticeable texture and distressed details. The piece is supported by an iron foot finished in matte black.



20134



17867





**19231 Sini Finials, S/2**

S- 6"x 12"x 6", L- 7"x 14"x 7" Ceramic finials featuring a heavily distressed, powder blue finish with antiqued khaki undertones.

**18887 Chanda Sculptures, S/2**

S- 7"x 13"x 4", L- 8"x 16"x 4" Reactive glazed ceramic fan sculptures, comprised of blues, greens and bronze, set on tonneau-shaped crystal bases.







**17854 Eanes, S/2**

S- 12"x 14"x 2", L- 12"x 17"x 2" Modern earthenware accents feature a matte gray glaze with gloss black accents.

**17869 Makira, S/3**

S- 4"x 24"x 4", M- 4"x 27"x 4", L- 4"x 29"x 4" Ceramic constructed trio is inspired by global travels and exhibits a trendy black and white color story. Each is accented by polished chrome and crystal details.

17854



17869





17562

**17562 Prabal Sculpture**  
25"x 9"x 5" Antiqued metallic silver artifact sculpture displayed on a black nickel plated base.

**19697 Cosma**  
27"x 15"x 5" Heavily antiqued metallic silver with matte black stand.



19697





18767

**18767 Teak Branches, S/3**

S- 5"x 30"x 5", M- 5"x 36"x 5", L- 5"x 40"x 5" Warm white finish on teak wood branches with fossil gray finish on base. Each will vary in size and shape due to being uniquely handcrafted. Cracks and variations in grain are normal.

**20107 Ermanno Teak Balls, S/2**

S- 12"Rd, L- 16"Rd This set of decorative teak balls, will bring a rustic and warm atmosphere to any bare corner, balcony or terrace. Beautifully handcrafted and finished with a pale gray glaze. Each will vary in size due to being uniquely handcrafted. Cracks and variations in grain are normal.



20107







20186

**20186 Paol**

29"x 13"x 4" Natural mango wood log displayed on a matte black base. Each piece is handcrafted making it unique. Sizes will vary. Cracks and variations in the grain are normal.

**19822 Ashlea Sculptures, S/2**

S- 13"x 19"x 4", L- 15"x 21"x 3" Natural mango wood logs on matte black metal bases.



19822





**18722 Cholla Wood Sculpture**

30"x 10"x 5" Cast from a cholla wood skeleton, a driftwood that is an all-natural, dried husk of the cholla cactus that grows in the southwest United States. Displayed on a black marble base with polished silver tubes.

**18912 Pulley System**

30"x 12"x 7" Collection of cast iron pulleys displayed on hanging hooks and wooden stand.



18912





**19280 Music Notes, S/3**

S- 5"x 8"x 3", M- 5"x 9"x 3", L- 5"x 12"x 3"  
Hand forged metal finished in aged black with a  
tan glaze and matte black accents.

**18841 Bianzhong**

19"x 13"x 5" A tabletop interpretation of the  
ancient Chinese musical instrument, Bianzhong,  
in which the bells graduate in size to provide  
a different sound when struck with the mallet.  
Displayed on a fir wood base.





**18888 Nautilus Shell Sculpture**

11"x 9"x 8" An oversized nautilus shell, cast with a granular stone textured finish and set on a crystal base.

**17523 Oyster Shell Sculptures, S/2**

S- 5"x 11"x 3", L- 5"x 15"x 3" Cast from natural oyster shells these sculptures feature an aged ivory finish with chrome accents and set atop staggered height crystal cube bases.

**19556 Conch Shell Sculpture, S/2**

S- 12"x 8"x 6", L- 18"x 12"x 8" Symbols of the sea are depicted in these sculptures featuring natural looking shells on matte black metal stands.







19947



18614

**19947 Propellers Sculpture, S/2**  
S- 11"x 18"x 4", L- 16"x 21"x 4"  
Reproduction boat propellers, a conversation piece in any room. Cast from old propellers, these items show the natural wear and imperfections of the originals. The finish is a rust brown with green tarnish and a gray glaze. The steel base is matte black.

**18614 Drop Anchor Sculpture**  
8"x 10"x 3" Cast metal anchor with an antique silver leaf finish, set on a white marble slab base.



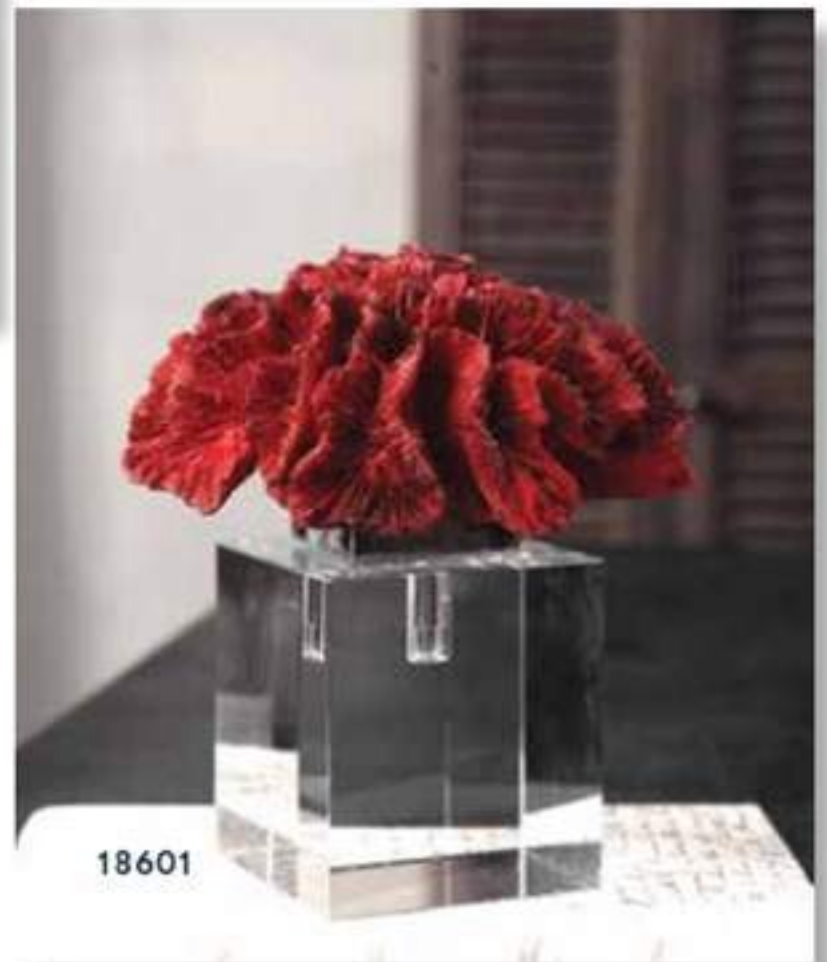


19910

**19910 Hard Coral Sculpture, S/2**  
S- 6"x 5"x 6", L- 7"x 6"x 7" Textured cream finish accented by a crystal base.

**18601 Red Coral Cluster Sculpture**  
7"x 8"x 7" The body is cast directly from a rare red coral cluster, seated on a large crystal cube.

**19976 Blade Coral**  
20"x 12"x 11" Lifelike coral in textured white, mounted on a matte black base.



18601



19976





**17548 Cascara Sculpture**

6" x 10" x 6" This decorative sphere is handcrafted with faux sea shells, accented with polished nickel plated accents and cylinder shaped crystal base.

**20091 Starfish Sculpture, S/2**

S- 10" x 19" x 4", L- 11" x 24" x 4" Realistic starfish replicas feature a pale, marine green finish and sit atop tarnished silver stands.







**18581 Jaylene Figurines, S/2**  
S- 8"x 16"x 7", L- 7"x 18"x 5" Tarnished silver figurine sculptures with crystal accents and steel cube bases.

**20309 Hera Sculpture**  
12"x 28"x 7" This sculpture is made of hand forged metal and has a nickel plated finish. Base is matte black.







20062



19061

**20062 Musical Ensemble Figurines, S/3**

S- 5"x 6"x 10", M- 7"x 6"x 13", L- 6"x 5"x 15"  
Artistic musicians hard at work. Musicians are cast in aluminum, and feature a textured, silver plated finish. Each musician is resting on a matte black base, perfect for a coffee table conversation piece, a bookshelf or foyer table.

**19061 Musicians Figurines, S/3**

S- 5"x 15"x 5", M- 6"x 15"x 4", L- 5"x 18"x 5"  
These fun statues are finished in slate gray with silver plated accents and dark chestnut brown bases.





19675



**19675 Practice Shot Figurines, S/2**  
S- 7"x 15"x 4", L- 7"x 16"x 3" Metallic silver figurines with a matte black glaze.

**19502 Dahy Statues, S/2**  
S- 11"x 14"x 6", L- 20"x 13"x 5" Features an antiqued silver finish.



19502





**17597 Stand Together Figurine**  
 21"x 19"x 3" Textured figurines with an appearance of hand molding finished in a heavily aged gold displayed on a porous aged black base.

**18991 Camaraderie Figurine**  
 15"x 10"x 5" Textured figurines with an appearance of hand molding finished in a heavily aged silver displayed on a porous textured, aged black base.

17597



18991





19439

**19439 Family Circles Figurine**  
13"x 14"x 6" This statue symbolizes the unity of family and is finished in a bronze patina.

**20121 Hold My Hand Sculpture**  
9"x 4"x 5" Antiqued gold leaf, cast iron sculpture of hands, forever intertwined, remind us of the comfort and joy physical connection brings.

**19446 Summer Days Sculpture**  
17"x 6"x 5" Heavily textured antiqued bronze.



20121



19446





18992



19445

**18992 Courtship Figurine**

10"x 19"x 7" Porous textured figurine finished in a lightly antique nickel finish.

**19445 At Play Sculpture**

10"x 11"x 3" This statue depicts one of the fun and special times between a mother and her child. This is made from hand beaten iron with a heavily antiqued chestnut finish.

**19488 Freedom Rider Figurine**

15"x 13"x 10" Metal with sage green finish with rust colored highlights.



19488





20120

**20120 Hello Friend Sculpture**  
9"x 10"x 4" This playful, cast iron, sculpture features a dark brown horse with light bronze tipping turned to greet the antique gold bird that has positioned itself on his back. This will add a cheerful addition to any setting.

**17585 Caballo Dorado Sculpture**  
14"x 17"x 5" Horse sculpture in aged silver with subtle gold accents on a black iron stand.

**17514 Titan Horse Sculpture**  
14"x 17"x 6" Heavily textured horse sculpture finished in a heavily antiqued bronze with dark brown glaze standing on a concrete inspired base.



17514



17585



**19217 Prancing Horse Sculpture**

21"x 19"x 6" This sculpture features a heavily antiqued, textured ivory finish with matte black base.

**18990 Epeius Horse Statue**

15"x 14"x 4" Etruscan style horse sculpture finished in a copper bronze with light gray glaze and set atop an aged matte black base.

**17531 Equine Sculpture**

7"x 15"x 5" Cast iron horse sculpture in antique gold leaf finish.



19217



18990



17531





18921

**18921 Phoenix Sculpture**

19"x 18"x 7" Lightly antiqued, brushed nickel plated prancing horse set on a black marble base.



19967

**19967 Let's Graze Sculptures, S/2**

S- 10"x 10"x 3", L- 10"x 12"x 3" These adorable ponies appear to be ready to start running and frolicking at any moment. Made of textured, polished aluminum, the figures are mounted to black wooden bases.



**17738 Foal Sculpture**

8"x 10"x 5" Cast iron horse sculpture finished in antique silver leaf is set atop an elegant white marble base.



17738





17522

**17522 Masai Giraffe Figurines, S/2**

S- 5"x 15"x 3", L- 5"x 21"x 3" Set of two giraffe figurines feature a molded clay texture with an antique plated metallic silver finish and set atop lightly antiqued concrete bases.

**19473 Playful Pachyderms Figurine**

16"x 16"x 8" Antiqued bronze patina with gray glaze and matte black base. Comes with one box and two figurines that may be placed with trunks entwined or not.

**19058 Colorful Cows Figurines, S/3**

S- 5"x 5"x 2", M- 8"x 7"x 4", L- 10"x 8"x 4" These whimsical accessories are made of metal and finished in multiple tones of green, red, blue, and orange with silver plated metal accents.



19473



19058





18944

**18944 Admiration Sculpture**

15"x 19"x 4" Lightly antiqued metallic silver leaf birds displayed on a mingled bronze and black iron base.

**18647 Isha Sculpture**

13"x 19"x 5" Abstract bird figure features a silver ombre finish on its interior and a lightly antiqued silver finish on the outside displayed atop a crystal base.



18647



UTTERMOST





17874

**17874 Overseer Sculpture**

7"x 18"x 5" Traditional and elegant, this peacock sculpture features a champagne silver bird atop a white marble column with a black marble base.

**18993 Origami Bird Figurines, S/2**

S- 9"x 10"x 3", L- 6"x 13"x 4" Creatively constructed, origami-inspired birds finished with a silver leaf finish and displayed on clear crystal cube bases.

**17104 Kase Candleholder**

11"x 21"x 5" Textured antique gunmetal on iron with hand-carved birds in a rubbed walnut with matching distressed foot and one, 3"x 2" distressed white candle.

**18603 Songbirds Sculpture**

11"x 13"x 2" Two cast brass, stylized songbirds counterpoised on a white marble sling base.



18993



17104



18603





19936



18898

**19936 Birds on a Limb Sculpture**

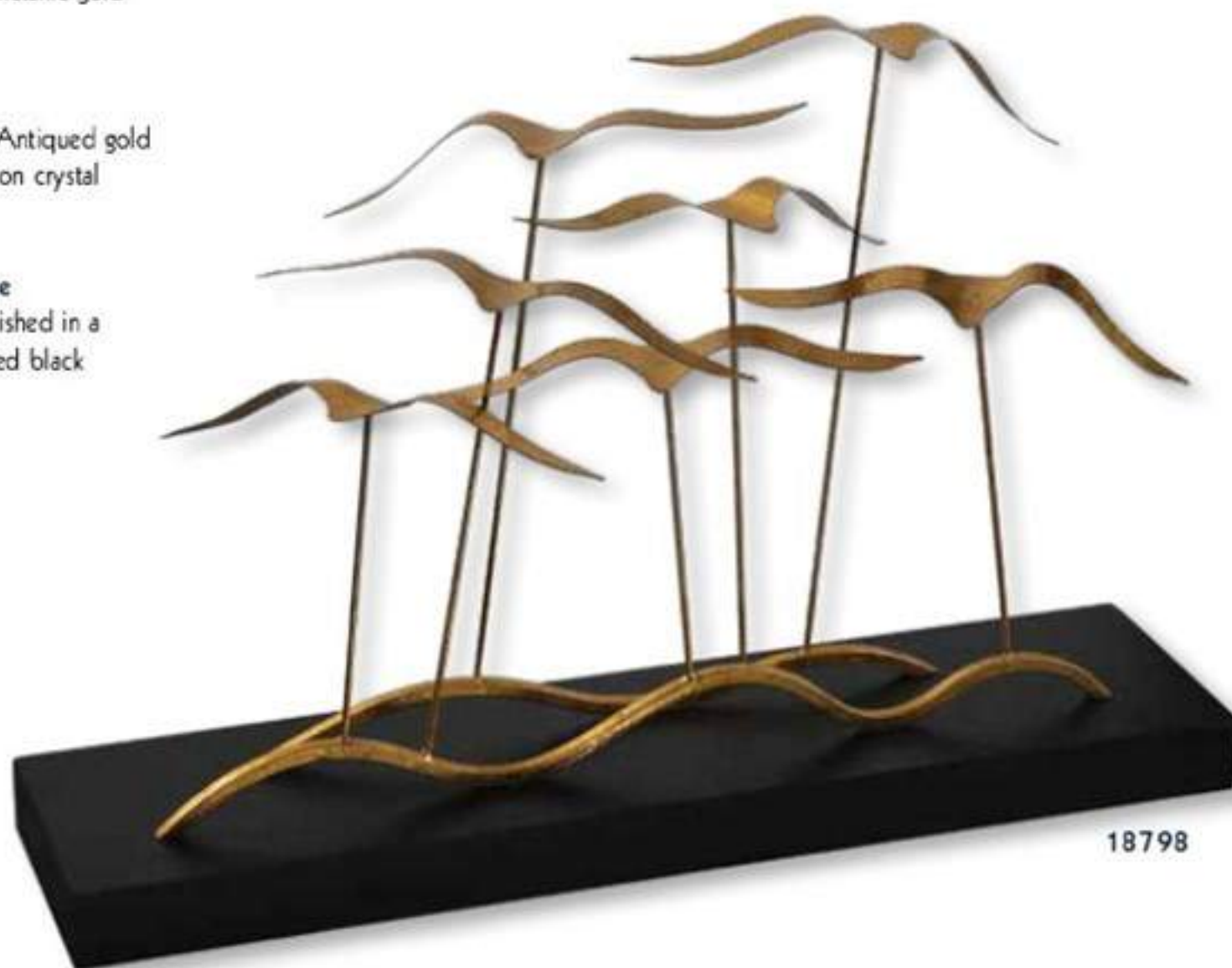
12"x 18"x 6" A sculpture featuring twisted wrought iron tree limbs with bright, metallic gold birds.

**18898 Passerines Figurines, S/2**

S- 6"x 10"x 5", L- 7"x 13"x 6" Antiqued gold leaf perched bird figurines displayed on crystal bases.

**18798 Flock of Seagulls Sculpture**

24"x 16"x 8" Flock of seagulls, finished in a metallic gold leaf, flying above an aged black distressed wood base.



18798





19948

**19948 Tyrannosaurus Sculpture**  
19"x 20"x 11" Chestnut brown with a heavy gray glaze and matte black base.

**19888 Maximus Figurine**  
9"x 13"x 4" Heavily distressed cast iron dog figurine with golden bronze highlights.



19888





**17865 Tilman Bookends, S/2**

8"x 8"x 4" Modern and sophisticated these bookends feature black marble accents with white veining, accented by brushed nickel finished steel and crystal accents.

**17864 Clarin Bookends, S/2**

7"x 8"x 4" These contemporary bookends feature clean, white and gray marble motifs with elegant crystal details.

**17549 Charbel Bookends, S/2**

S- 5"x 9"x 8", L- 6"x 9"x 8" Set of two bookends featuring textured faux white coral on crystal bases.





19596



**19596 Lounging Reader Bookends, S/2**

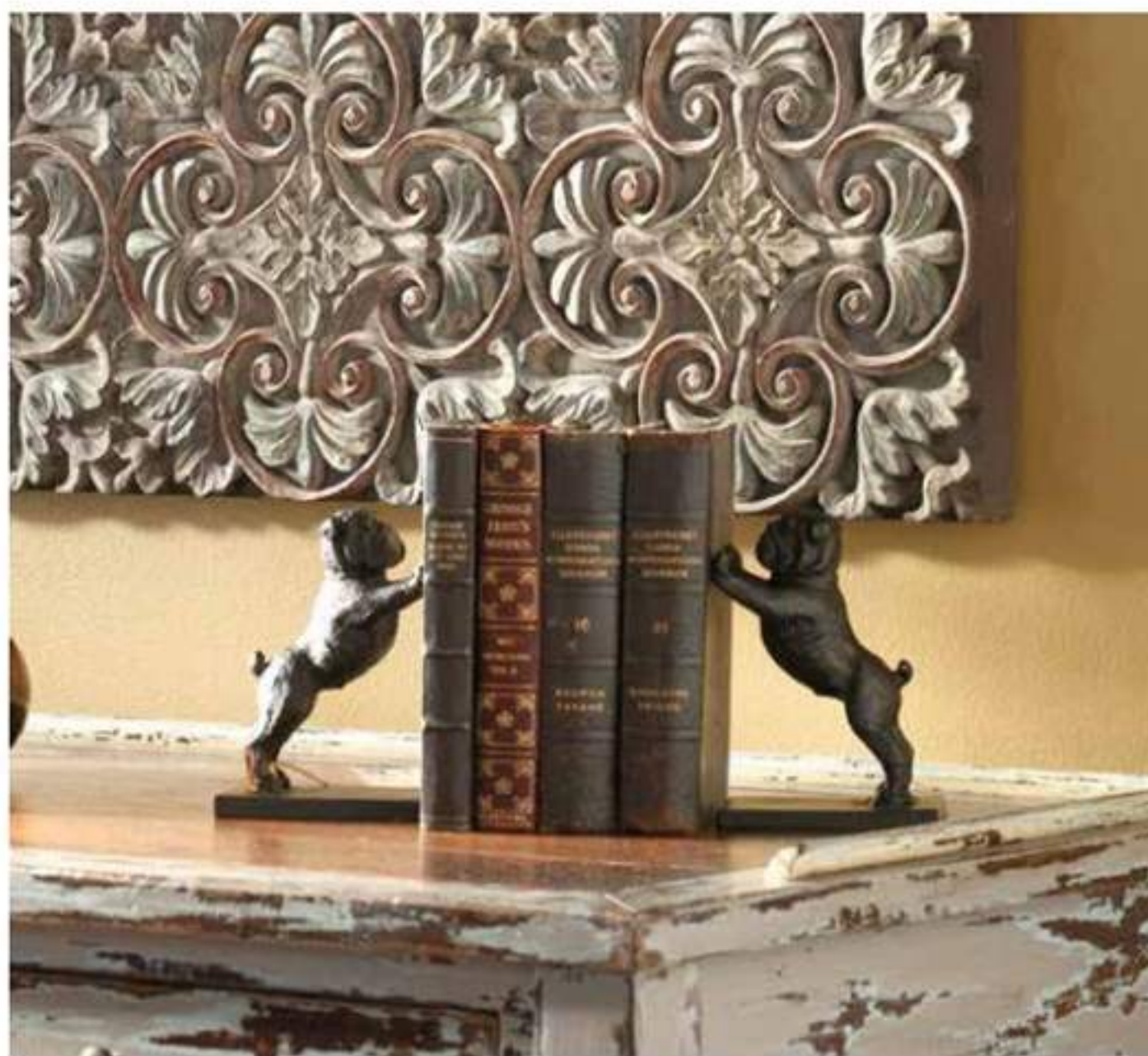
8"x 10"x 4" These whimsical bookends feature an antiqued silver leaf finish with a light gray glaze.

**19643 Bulldogs Bookends, S/2**

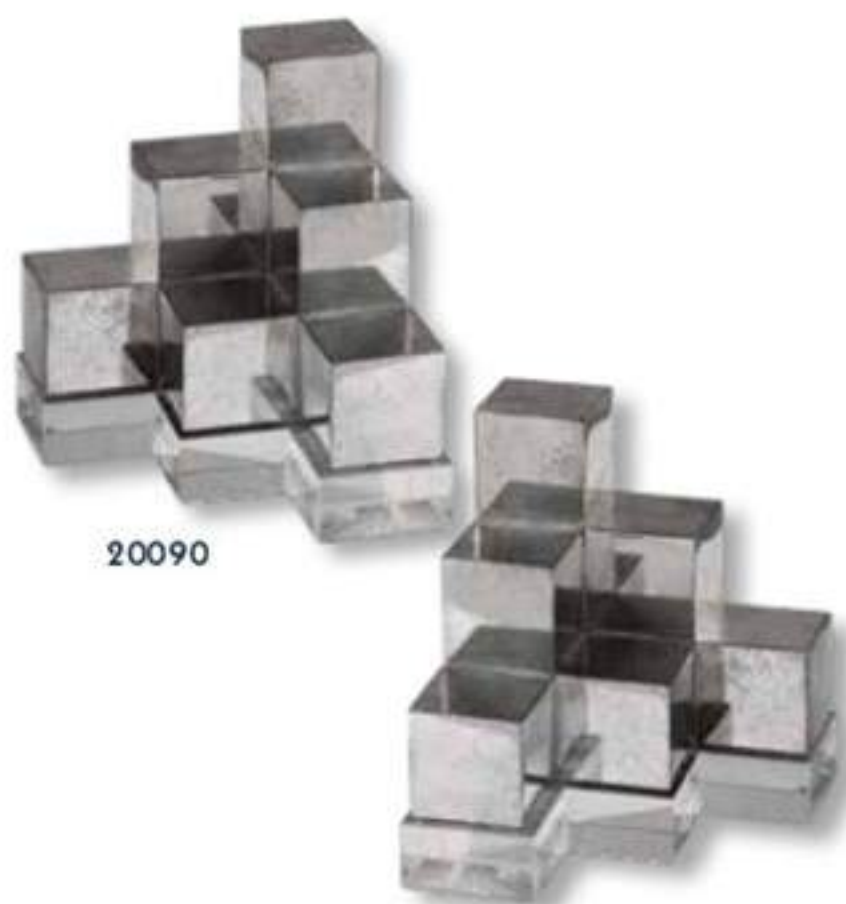
4"x 7"x 3" These adorable bookends are made of cast iron and finished in heavily, distressed golden bronze with a dark gray glaze.



19643







20090

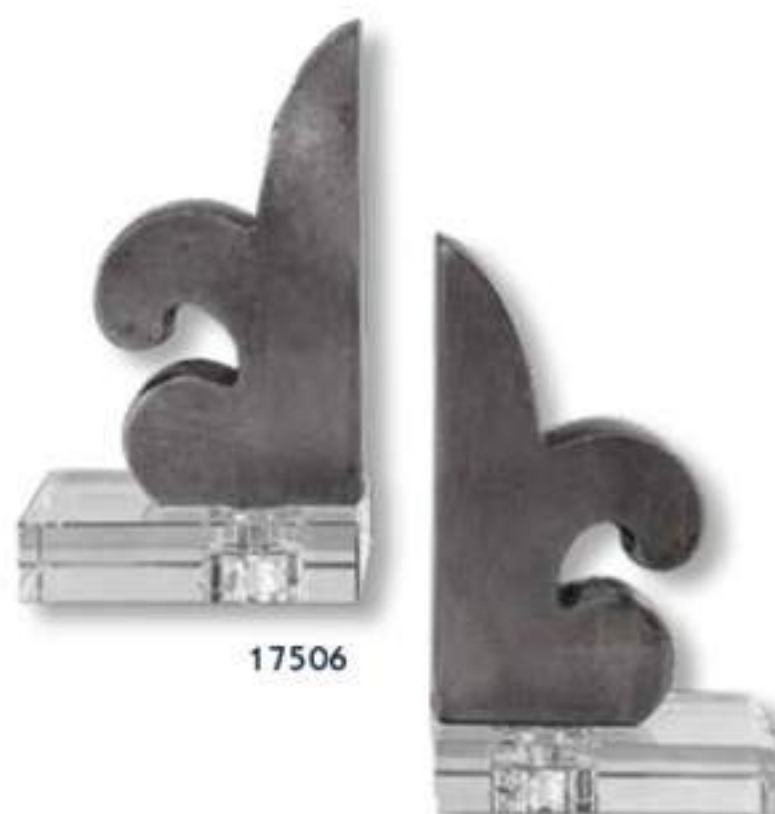


**20090 Valerio Bookends, S/2**

6"x 7"x 6" Intriguing, geometric style bookends feature a tarnished silver finish with crystal bases.

**17506 Lily Bookends, S/2**

5"x 9"x 4" Pair of lacquered iron fleur-de-lis bookends displayed on crystal bases.



17506



**19613 Brisco Finials, S/2**

S- 6"x 14"x 6", L- 8"x 18"x 8" Made from carved, solid wood these finials feature a natural wood tone finish.

**19080 Suzuha Finial**

11"x 27"x 11" Hand forged and hand hammered metal with an antiqued, aged ivory finish with burnishing.



19080



19613







18847

**18847 Nalini Finials, S/2**

S- 5"x 22"x 5", L- 5"x 28"x 5" Carved mango wood finials finished in a light charcoal stain with antique gold highlights.

**19025 Alanna Finials, S/2**

S- 6"x 19"x 6", L- 6"x 24"x 6" These decorative finials are constructed of numerous beveled mirrors with polished edges for a smooth finish.



19025





18567

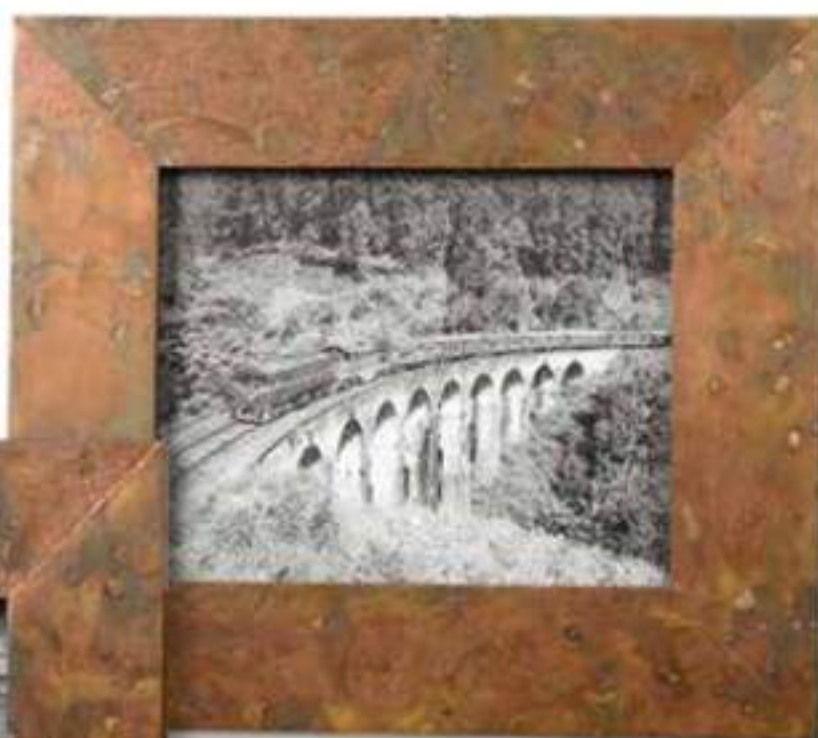


**18567 Daria Photo Frames, S/3**

S- 6"x 8", M- 8"x 10", L- 12"x 14" Display those special photos in these sophisticated frames made of antiqued, beveled mirrors accented with an aged pecan stained solid wood outer frame. Holds photo sizes: 4x6, 5x7 & 8x10.

**18564 Ambrosia Photo Frames, S/3**

S- 9"x 11", M- 10"x 12", L- 13"x 15" Frames feature oxidized copper sheeting. The oxidation on each piece will vary due to their handcrafted nature. Holds photo sizes: 4x6, 5x7 & 8x10.



18564







**18796 Gold Branches Decorative Fireplace Screen**  
47"x 32"x 6" Hand forged, hammered iron branches with  
bright gold leaf finish.





20072

**20072 Armino Fireplace Screen**

51"x 30" Decorative, iron fireplace screen features a lightly antiqued silver leaf finish. Center panel is 26" wide and each side panel is 13" wide.

**18707 Rosen Fireplace Screen**

53"x 34" Forged iron finished in lightly antiqued gold leaf. Center panel is 26" wide and the side panels are each 13" wide.



18707





60116

**60116 Sea Coast Succulents**

26"x 15"x 16" Giant clam shell replica filled with lush variety of 13 different succulents and grasses.

**60119 Salar Succulents**

22"x 20"x 12" Dense and lush mix of succulent plants including aloe, jade, bromeliad, string of pearls and others in a hand carved, natural teak bowl.



60119



UTTERMOST





60177

**60177 Evarado Aloe Planter**

17"x 30"x 17" A contemporary aloe vera statement piece, accented with natural stones set into a glossy white textured bowl.



60173

**60173 Alverio Succulents**

10"x 10"x 12" A contemporary desert garden mix of succulents accented with an arid bed of natural pebbles in a mottled charcoal gray concrete planter.

**60174 Charita Succulents**

30"x 10"x 10" A lush mix of succulents in varying tones of greens and burgundy over a faux soil mixture, filling a solid concrete container resembling a life-like driftwood log.



60174





60181



60179



60180

**60181 Ibero Split Leaf Palm**

30"x 30"x 30" Contemporary split leaf palm trio is placed in a clear glass cylinder vase with natural stones and faux water.

**60179 Mari Calla Planter**

24"x 18"x 24" Variegated calla lily stems accented by a bed of naturally preserved moss in a beautifully oxidized metal planter.

**60180 Kinsale Moss Centerpiece**

19"x 7"x 9" Beautifully preserved mounds of moss placed in a natural teak wood bowl. Because each is individually handcrafted, sizes may vary. Cracks and variations in the grain are natural to this type of wood.

**60115 La Costa Greenery, S/3**

S- Floret Aeonium 5"x 5"x 5", M- Jade Succulent 8"x 10"x 8", L- Yucca Grass 18"x 15"x 18" Arid trio of succulents and yucca grass in aged ivory, ceramic pottery with dark gray tipping and a light tan wash.



60115





60149

**60149 Hala Silk Centerpiece**

22"x 15"x 14" A structural statement centerpiece featuring a twisted faux branch wrapped with various succulent and orchids, placed in a clear glass bowl with natural stones and faux water.

**60157 Mabry Fern Centerpiece**

27"x 24"x 25" A dramatic contemporary centerpiece, featuring lush fern varieties nestled into a mounded bed of moss, in an oversized concrete urn with a natural aged finish.

**60148 Ceci Kitchen Herbs, S/4**

12"x 16"x 10" A collection of kitchen herbs each placed in a clear glass bud vase with natural stones and faux water. Includes parsley, basil, oregano, and rosemary.



60148



60157





60164



60145

**60164 Urbana Fiddle Leaf Fig**

24"x 36"x 18" A staple across many design styles, this fiddle leaf fig branch is placed in a contemporary clear glass cylinder vase with natural stones and faux water.

**60145 Blaire Peony Bouquet**

10"x 9"x 10" A sweet mix of lush pink and cream peony cuttings placed in a round, clear glass vase with faux water.

**60141 Etta Hyacinth Bouquet**

14"x 16"x 8" Displaying life-like characteristics, this silk arrangement features vibrant Mediterranean blue hyacinths neatly arranged in an oval glass vase with faux water.

**60156 Kimbry Tulip Centerpiece**

27"x 18"x 16" Featuring a dramatic spread of white tulips, meticulously placed into an oval glass vase complete with faux water.



60141



60156







60144

**60144 Celia Silk Magnolia Accent**

13"x 12"x 9" A Southern staple, this large magnolia blossom is placed in an asymmetrical, clear glass vase with faux water and natural stones.

**60155 Cecily Hydrangea Bouquet**

15"x 11"x 13" Capturing the essence of transitional decor, with large cream and sage hydrangea blooms paired with rose cuttings and rosehip buds, placed into a square glass vase with natural stones and faux water.



60155

**60128 Quince Blossoms Silk Centerpiece**

30"x 36"x 30" Effortlessly arranged as if freshly harvested, these quince branches exemplify the true characteristics of live blooms. Varying in stages of openness, cream buds are accented by natural rocks in a clear glass vase.



60128

**60182 Belmonte Floral Bouquet**

14"x 13"x 12" Modern floral bouquet features a unique mix of berries, greenery, seed pods, succulents and cream roses in a clear glass bud vase with faux water.



60182







**60039 Moth Orchid Planter**

19"x 34"x 19" Hand painted, natural brown dish garden of white moth orchids planted in permanent soil with mixed foliage from the orchid family.

**60122 Kaleama Orchids, White**

15"x 33"x 10" Gracefully arching stems of white orchids atop a bed of moss, nestled in a glass mirrored cube container. Base is 6"x 6".

**60178 Cami Orchid**

14"x 24"x 14" A gracefully arching stem of white orchids with reindeer moss accents over a bed of naturally preserved moss, placed in a contemporary textured white ceramic pot. Container is 4.5" W x 4.5" H x 4.5" D.



60039



60122



60178





**60175 Eponine Orchid**  
14"x 34"x 6" A gracefully arching stem of white orchids over a bed of faux potting soil, placed in a contemporary mottled charcoal gray concrete planter.





60146

**60146 Aldis Potted River Birch**

19"x 78"x 17" Life-like river birch stems creating a minimalist modern statement featuring faux moss and an aged stone finished concrete urn.

**60150 Tassos Potted Olive**

17"x 36"x 16" With Mediterranean influences, this accent piece features lush olive branches in a naturally distressed turned wooden vase with a light gray glaze. Due to the nature of the wood, each piece will feature unique characteristics.

**60176 Cypress Globes, S/2**

S- 6"x 11"x 6", L- 9"x 14"x 9" Wispy sprays of cypress foliage, preserved while freshly picked to maintain the life-like evergreen quality, set into aged stone finished terracotta pots. Indoor use only.



60176



60150



**60139 Cypress Cone Topiary**

8"x 36"x 8" Wispy sprays of cypress foliage, preserved while freshly picked to maintain the life-like evergreen quality, set into a ribbed terracotta pot finished in an aged dark gray.

**60172 Cypress Triple Topiary**

8"x 43"x 8" Wispy sprays of cypress foliage, preserved while freshly picked to maintain the life-like evergreen quality, set into an aged gray finished terracotta pot. Indoor use only.

**60140 Cypress Cone Topiaries, S/2**

S- 4"x 15"x 4", L- 5"x 18"x 5" Wispy sprays of cypress foliage, preserved while freshly picked to maintain the life-like evergreen quality, set into aged stone finished terracotta pots. Indoor use only.



60140



60139



60172





60106

**60106 Preserved Boxwood Two Sphere Topiary**

10"x 36"x 10" Natural evergreen foliage preserved while freshly picked, looks and feels like living boxwood. Double spheres arranged on wooden twigs, potted in a mossy stone finished terra cotta planter. Indoor use only.

**60095 Preserved Boxwood Tree Topiary**

14"x 33"x 14" Preserved while freshly picked, natural evergreen foliage looks and feels like living boxwood. Single topiary is potted in mossy stone finished terracotta planter. Indoor use only.

**60111 Preserved Boxwood Cone Topiary**

9"x 29"x 9" Preserved, natural evergreen foliage potted in a light stone finished, ceramic planter. Indoor use only.

**60108 Preserved Boxwood Willow Topiary**

15"x 17"x 9" Preserved while freshly picked, natural evergreen foliage looks and feels like living boxwood arranged atop willow branches in a mossy, stone finished terracotta planter.

**60107 Preserved Boxwood Oval Domes, S/2**

S- 10"x 8"x 6", L 14"x 12"x 8" Preserved while freshly picked, natural evergreen foliage looks and feels like living boxwood potted in mossy, stone finished terracotta planters. Indoor use only.



60111



60095



60108



60107

